

## Product datasheet for **RC206877**

### UBALD1 (NM\_145253) Human Tagged ORF Clone

#### Product data:

**Product Type:** Expression Plasmids  
**Product Name:** UBALD1 (NM\_145253) Human Tagged ORF Clone  
**Tag:** Myc-DDK  
**Symbol:** UBALD1  
**Synonyms:** FAM100A; PP11303  
**Mammalian Cell Selection:** Neomycin  
**Vector:** pCMV6-Entry (PS100001)  
**E. coli Selection:** Kanamycin (25 ug/mL)  
**ORF Nucleotide Sequence:** >RC206877 ORF sequence  
Red=Cloning site Blue=ORF Green=Tags(s)

TTTTGTAATACGACTCACTATAGGGCGGCCGGAATTCGTCGACTGGATCCGGTACCGAGGAGATCTGCC  
GCC**CGCATCGCC**

ATGTCCGTGAACATGGACGAGCTCAAGCACCAGGTCATGATCAACCAGTTCGTGCTGACGGCGGGCTGCG  
CGGCCGACCAGGCGAAGCAACTGCTGCAGGCGGCCACTGGCAGTTCGAGACAGCCCTCAGCGCCTTTTT  
CCAGGAGACCAACATCCCCTACAGCCACCATCACCACCAGATGATGTGCACCCCCCAATACCCCTGCT  
ACACCCCCAACTTCCCTGACGCTCTCACCATGTTCTCCCGTCTCAAGGCTCCGAGAGCTTCCACAGCG  
GTGGCAGCGGCAGCCGATGGCCGCGACAGCCAGTCACCCCCGCACACTTCCCCATGCCGCCACCAG  
CAGCTCTGCGGCCCTCAGCTGGCCACGGCGGCCCTCGCCCCGGGGGGCCACAGCACCACCAGCCACAG  
CCGCCCTGTGGACTCCAACACCCCTTCTCCGGTTCAGACTGGCCACCCTGGCCCCCAACAGGCCA  
CCTCAGAACCAGGGCCACCCTGCCATGGAGGCAGAGAGA

**ACGCGT**ACGCGGCCGCTCGAGCAGAACTCATCTCAGAAGAGGATCTGGCAGCAATGATATCCTGGATT  
ACAAGGATGACGACGATAAGGTTTAA

**Protein Sequence:** >RC206877 protein sequence  
Red=Cloning site Green=Tags(s)  
MSVNMDELKHQVMINQFVLTAGCAADQAKQLLQAAHWQFETALSFAFFQETNIPYSHHHHQMCTPANTPA  
TPPNFPDALTMFSRLKASESFHSGSGSPMAATATSPPPHPPHAATSSSAASSWPTAASPGGPQHHQPQ  
PPLWTPPPSPASDWPLAPQQATSEPRHPAMEAER

**TRTRPLEQKLI**SEEDLAANDILDYKDDDDKV

**Chromatograms:** [https://cdn.origene.com/chromatograms/mk6564\\_f06.zip](https://cdn.origene.com/chromatograms/mk6564_f06.zip)



[View online »](#)

Restriction Sites: SgfI-MluI

Cloning Scheme:



ACCN: NM\_145253

ORF Size: 531 bp

OTI Disclaimer: The molecular sequence of this clone aligns with the gene accession number as a point of reference only. However, individual transcript sequences of the same gene can differ through naturally occurring variations (e.g. polymorphisms), each with its own valid existence. This clone is substantially in agreement with the reference, but a complete review of all prevailing variants is recommended prior to use. [More info](#)

OTI Annotation: This clone was engineered to express the complete ORF with an expression tag. Expression varies depending on the nature of the gene.

Components: The ORF clone is ion-exchange column purified and shipped in a 2D barcoded Matrix tube containing 10ug of transfection-ready, dried plasmid DNA (reconstitute with 100 ul of water).

Reconstitution Method:

1. Centrifuge at 5,000xg for 5min.
2. Carefully open the tube and add 100ul of sterile water to dissolve the DNA.
3. Close the tube and incubate for 10 minutes at room temperature.
4. Briefly vortex the tube and then do a quick spin (less than 5000xg) to concentrate the liquid at the bottom.
5. Store the suspended plasmid at -20°C. The DNA is stable for at least one year from date of shipping when stored at -20°C.

RefSeq: [NM\\_145253.3](#)

RefSeq Size: 1430 bp

RefSeq ORF: 534 bp

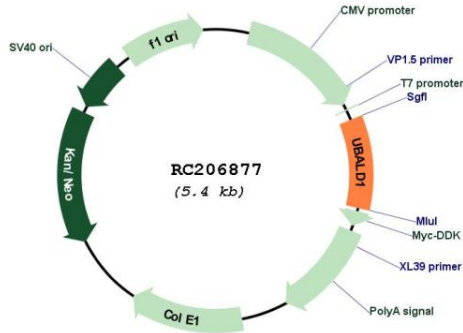
Locus ID: 124402

UniProt ID: [Q8TB05](#)

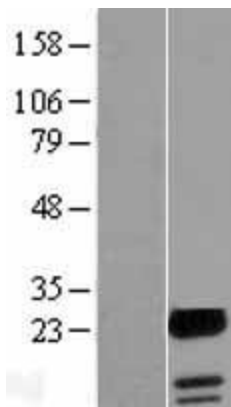
Cytogenetics: 16p13.3

MW: 19 kDa

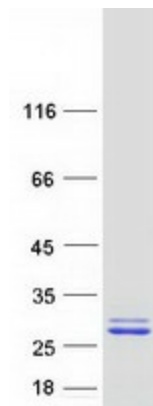
**Product images:**



Circular map for RC206877



Western blot validation of overexpression lysate (Cat# [LY407922]) using anti-DDK antibody (Cat# [TA50011-100]). Left: Cell lysates from untransfected HEK293T cells; Right: Cell lysates from HEK293T cells transfected with RC206877 using transfection reagent MegaTran 2.0 (Cat# [TT210002]).



Coomassie blue staining of purified UBALD1 protein (Cat# [TP306877]). The protein was produced from HEK293T cells transfected with UBALD1 cDNA clone (Cat# RC206877) using MegaTran 2.0 (Cat# [TT210002]).