

## Product datasheet for **RC206874**

### FGFBP3 (NM\_152429) Human Tagged ORF Clone

#### Product data:

Product Type:	Expression Plasmids
Product Name:	FGFBP3 (NM_152429) Human Tagged ORF Clone
Tag:	Myc-DDK
Symbol:	FGFBP3
Synonyms:	C10orf13; FGF-BP3
Mammalian Cell Selection:	Neomycin
Vector:	pCMV6-Entry (PS100001)
E. coli Selection:	Kanamycin (25 ug/mL)
ORF Nucleotide Sequence:	>RC206874 ORF sequence Red=Cloning site Blue=ORF Green=Tags(s)

TTTTGTAAACGACTCACTATAGGGCGCCGGGAATTCGTCGACTGGATCCGGTACCGAGGAGATCTGCC  
GCC**CGCATCGCC**

ATGACTCCTCCGAAGCTGCGAGCGTCGCTGTCGCCGTCGCTGCTGCTGCTGCTGAGTGGTTGCCTCCTCG  
CGGCTGCTCGGAGGGAGAAAGGGGCGGCTAGCAACGTGGCGGAGCCGGTCCCCGGGCCACTGGCGGCTC  
CTCGGGTCGCTTCCTCAGCCCCGAGCAGCACGCGTGCAGCTGGCAGCTCCTGCTGCCCGCCCGGAGGCC  
GCAGCGGGCAGCGAGCTGGCGCTGCGCTGCCAGAGCCCCGACGGGGCGGCCACCACTGCGCCTACCGCG  
GGCATCCGGAGCGCTGCGCAGCCTACGCCGCTCGCCGCGCGCACTTCTGGAAGCAGGTGCTGGGAGGGCT  
GCGCAAGAAGCGGAGGCCCTGTACAGACCCCGCCGCTCCAGGCCCGCTTGTGCGCGGGCAAGAAGGGC  
CACGGCCCGAGCTGCGGCTAGTGCCCCGCGCTCCCCGCCGACGCCCCACCGTCCGGGGATTTCGCGG  
GGGAGTCCAAGCCCCGGGCCCGGAACCGGGGGCGGACCCGGGAGCGTGCCTCCGGCCAGCCGCTGGGAC  
CCCGCCTCCCCAAGCGCACCGCCAAAGAAAACCCCTCAGAGAGGAAGACCAACGAGGGCAAGAGGAAG  
GCGGCCTTGGTCCCCAACGAGGAGCGACCCATGGGGACCGGGCCGACCCGACGGGCTGGACGGGAACG  
CGGAGCTACGGAGACCTACTGCGCTGAGAAGTGGCACTCCCTGCAACTTCTTTGTCAATTTCTGGAA  
CGGC

AG**CGGACCG**ACGCGTACGCGCCGCTCGAGCAGAACTCATCTCAGAAGAGGATCTGGCAGCAAATGATATCC  
TGGATTACAAGGATGACGACGATAAGGTTTAA



[View online »](#)

**Protein Sequence:** >RC206874 protein sequence  
Red=Cloning site Green=Tags(s)

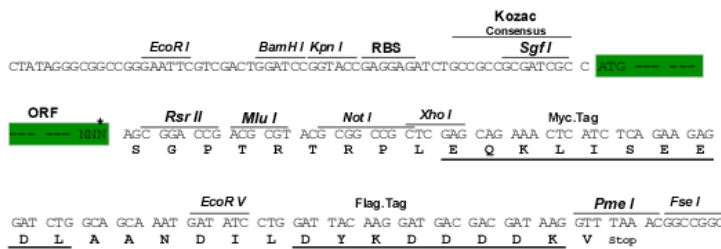
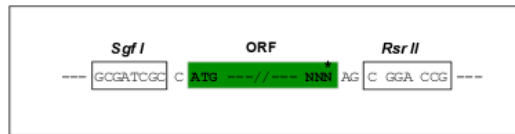
MTPPKLRASLSPSLLLLLSGCLLAAARREKGAASNVAEPVPGPTGGSSGRFLSPEQHACSWQLLLPAPEA  
 AAGSELALRCQSPD GARHQCA YRGHPERCAAYAARRAHFWKQVLGGLRKKRRPCHDPAPLQARLCAGKKG  
 HGAELRLVPRASPPARPTVAGFAGESKPRARNRGRTRERASGPAAGTPPPQSAAPPKENPSEKRTNEGKRR  
 AALVPNEERPMGTGPD DGLD GNAEL TETYCAEKWHSLCNFFVNFVWNG

SGPTRTRPLEQKLI SEEDLAANDILDYKDDDDKV

**Restriction Sites:** SgfI-RsrII

**Cloning Scheme:**

Cloning sites used for ORF Shuttling:



\* The last codon before the Stop codon of the ORF

**ACCN:** NM\_152429

**ORF Size:** 774 bp

**OTI Disclaimer:** Due to the inherent nature of this plasmid, standard methods to replicate additional amounts of DNA in E. coli are highly likely to result in mutations and/or rearrangements. Therefore, OriGene does not guarantee the capability to replicate this plasmid DNA. Additional amounts of DNA can be purchased from OriGene with batch-specific, full-sequence verification at a reduced cost. Please contact our customer care team at [custsupport@origene.com](mailto:custsupport@origene.com) or by calling 301.340.3188 option 3 for pricing and delivery.

The molecular sequence of this clone aligns with the gene accession number as a point of reference only. However, individual transcript sequences of the same gene can differ through naturally occurring variations (e.g. polymorphisms), each with its own valid existence. This clone is substantially in agreement with the reference, but a complete review of all prevailing variants is recommended prior to use. [More info](#)

**OTI Annotation:** This clone was engineered to express the complete ORF with an expression tag. Expression varies depending on the nature of the gene.

**Components:** The ORF clone is ion-exchange column purified and shipped in a 2D barcoded Matrix tube containing 10ug of transfection-ready, dried plasmid DNA (reconstitute with 100 ul of water).

**Reconstitution Method:**

1. Centrifuge at 5,000xg for 5min.
2. Carefully open the tube and add 100ul of sterile water to dissolve the DNA.
3. Close the tube and incubate for 10 minutes at room temperature.
4. Briefly vortex the tube and then do a quick spin (less than 5000xg) to concentrate the liquid at the bottom.
5. Store the suspended plasmid at -20°C. The DNA is stable for at least one year from date of shipping when stored at -20°C.

**RefSeq:** [NM\\_152429.5](#)

**RefSeq Size:** 2564 bp

**RefSeq ORF:** 777 bp

**Locus ID:** 143282

**UniProt ID:** [Q8TAT2](#)

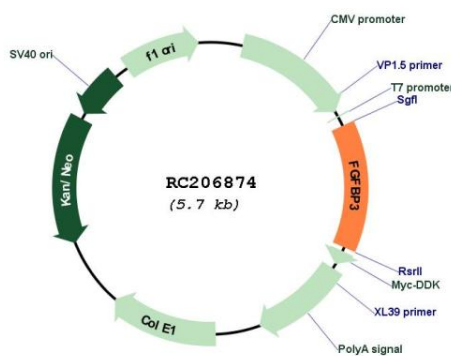
**Cytogenetics:** 10q23.32

**Protein Families:** Secreted Protein

**MW:** 27.6 kDa

**Gene Summary:** Heparin-binding protein which binds to FGF2, prevents binding of FGF2 to heparin and probably inhibits immobilization of FGF2 on extracellular matrix glycosaminoglycans, allowing its release and subsequent activation of FGFR signaling which leads to increased vascular permeability.[UniProtKB/Swiss-Prot Function]

### Product images:



Circular map for RC206874