

Product datasheet for **RC206864**

SLC35B2 (NM_178148) Human Tagged ORF Clone

Product data:

Product Type:	Expression Plasmids
Product Name:	SLC35B2 (NM_178148) Human Tagged ORF Clone
Tag:	Myc-DDK
Symbol:	SLC35B2
Synonyms:	PAPST1; SLL; UGTrel4
Mammalian Cell Selection:	Neomycin
Vector:	pCMV6-Entry (PS100001)
E. coli Selection:	Kanamycin (25 ug/mL)



[View online »](#)

ORF Nucleotide Sequence:

>RC206864 ORF sequence
 Red=Cloning site Blue=ORF Green=Tags(s)

TTTTGTAATACGACTCACTATAGGGCGGCCGGAATTCGTCGACTGGATCCGGTACCGAGGAGATCTGCC
 GCC**CGCATCGCC**

ATGGACGCCAGATGGTGGCAGTGGTGGTCTGGCTGCGTTCCCTCCCTAGGGGCAGGTGGGAGACTC
 CCGAAGCCCTCCGGAGTCATGGACCCAGCTATGGTTCTCCGATTTGTGGTGAATGCTGCTGGCTATGC
 CAGCTTTATGGTACCTGGCTACCTCCTGGTGCAGTACTTCAGGCGGAAGAACTACCTGGAGACCGGTAGG
 GGCTCTGCTTTCCCTGGTAAAGCTTGTGTGTTGGCAATGAGCCCAAGGCCTCTGATGAGGTTCCCT
 TGGCGCCCGAACAGAGGCGGCAGAGACCACCCGATGTGGCAGGCCCTGAAACTGCTTCTGTGCCAC
 AGGGCTCCAGGTGCTTATCTGACTTGGGGTGTGCTGCAGAAAGAGTGATGACCCGAGCTATGGGGCC
 ACAGCCACATCACCGGTGAGCGCTTACGGACTCGCAGTTCTGGTCTAATGAACCGAGTGTGGCAC
 TGATTGTGGTGGCTCTCCTGTGTTCTGCAAGCAGCCCGGCATGGGGCACCCATGTACCGGACTC
 CTTTGCCAGCCTGTCCAATGTGCTTAGCAGCTGGTCCAATACGAAGCTTTAAGTTCGTCAGTTCCTCC
 ACCCAGGTGCTGGCAAGGCCTTAAGGTGATCCCTGTCATGCTGATGGGAAAGCTTGTGTCTCGGCACA
 GCTACGAACACTGGGAGTACCTGACAGCCACCCTCATCTCCATTGGGGTACGATGTTTCTGCTATCCAG
 CGGACCAGAGCCCGCAGCTCCCGACCCACACTCTCAGGCCTCATCTACTGGCAGGTTATATTGCT
 TTTGACAGCTTACCTCAAAGTGGCAGGATGCCCTGTTTGCCATAAGATGTCATCGGTGCAGATGATGT
 TTGGGGTCAATTTCTTCTCCTGCCTCTTACAGTGGGCTCACTGCTAGAACAGGGGGCCCTACTGGAGGG
 AACCCGCTTATGGGGCGACACAGTGTGTTGCTGCCATGCCCTGCTACTCTCCATCTGCTCCGCATGT
 GGCCAGCTCTTCATCTTTACACCATGGGCAGTTGGGGCTGCCGTCTCACCATCATCATGACCCTCC
 GCCAGGCCTTTGCCATCCTTCTTCTCCTGCCTTCTATGGCCACACTGTCACTGTGGTGGGAGGGCTGGG
 GGTGGCTGTGGTCTTTGCTGCCCTCCTGCTCAGAGTCTACGCGCGGGCCGTCTAAAGCAACGGGAAAG
 AAGGCTGTGCTGTTGAGTCTCCTGTGAGAAGGTT

ACGCGTACGCGCGCCGCTCGAGCAGAAACTCATCTCAGAAGAGGATCTGGCAGCAAATGATATCCTGGATT
 ACAAGGATGACGACGATAAGGTTTAA

Protein Sequence:

>RC206864 protein sequence
 Red=Cloning site Green=Tags(s)

MDARWWAVVLAAPSLGAGGETPEAPPESWTQLWFFRFVVAAGYASFMVPGYLLVQYFRRKNYLETGR
 GLCFPLVKACVFGNEPKASDEVPLAPRTEAAETPMWQALKLLFCATGLQVSYL TWGVLQERVMTRS YGA
 TATSPGERFTDSQFLVLMNRVLALIVAGLSCVLCQPRHGAPMYRYSFASLSNVLSSWCQYEALKFV SFP
 TQVLAKASKVIPVMLMGKLVSRRSYEHWEYL TATLISIGVSMFLLSSGPEPRSSPATTLSGLILLAGYIA
 FDSFTSNWQDALFAYKMSSVQMMFVGNFFSCLFTVGSLLLEQGALLEGTRFMGRHSEFAAHALLLSICSAC
 GQLFI FYTIGQFGAAVFTIIMTLRQAFALLSCLLYGHTVTVVGGLGVAVVFAALLLRVYARGRLKQRGK
 KAVPVESPQKV

TRTRPLEQKLISEEDLAANDILDYKDDDDKV

Chromatograms:

https://cdn.origene.com/chromatograms/mk6564_b02.zip

Restriction Sites:

Sgfl-Mlul

Cloning Scheme:



ACCN: NM_178148

ORF Size: 1296 bp

OTI Disclaimer: The molecular sequence of this clone aligns with the gene accession number as a point of reference only. However, individual transcript sequences of the same gene can differ through naturally occurring variations (e.g. polymorphisms), each with its own valid existence. This clone is substantially in agreement with the reference, but a complete review of all prevailing variants is recommended prior to use. [More info](#)

OTI Annotation: This clone was engineered to express the complete ORF with an expression tag. Expression varies depending on the nature of the gene.

Components: The ORF clone is ion-exchange column purified and shipped in a 2D barcoded Matrix tube containing 10ug of transfection-ready, dried plasmid DNA (reconstitute with 100 ul of water).

Reconstitution Method:

1. Centrifuge at 5,000xg for 5min.
2. Carefully open the tube and add 100ul of sterile water to dissolve the DNA.
3. Close the tube and incubate for 10 minutes at room temperature.
4. Briefly vortex the tube and then do a quick spin (less than 5000xg) to concentrate the liquid at the bottom.
5. Store the suspended plasmid at -20°C. The DNA is stable for at least one year from date of shipping when stored at -20°C.

RefSeq: [NM_178148.1](#), [NP_835361.1](#)

RefSeq Size: 2084 bp

RefSeq ORF: 1299 bp

Locus ID: 347734

UniProt ID: [Q8TB61](#)

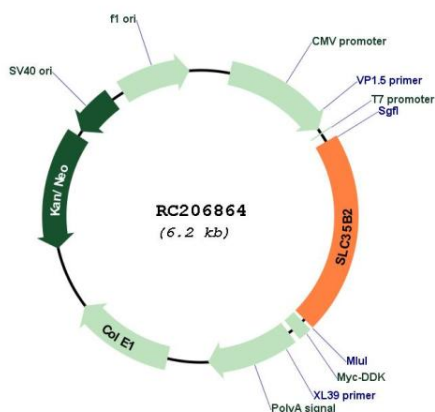
Cytogenetics: 6p21.1

Protein Families: Druggable Genome, Transmembrane

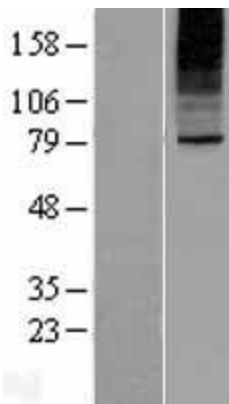
MW: 47.5 kDa

Gene Summary: Sulfotransferases (e.g., SULT4A1; MIM 608359) use an activated form of sulfate, 3-prime-phosphoadenosine 5-prime-phosphosulfate (PAPS), as a common sulfate donor for sulfation of glycoproteins, proteoglycans, and glycolipids in the endoplasmic reticulum and Golgi apparatus. SLC35B2 is located in the microsomal membrane and transports PAPS from the cytosol, where it is synthesized, into the Golgi lumen (Kamiyama et al., 2003 [PubMed 12716889]).[supplied by OMIM, Mar 2008]

Product images:



Circular map for RC206864



Western blot validation of overexpression lysate (Cat# [LY405945]) using anti-DDK antibody (Cat# [TA50011-100]). Left: Cell lysates from untransfected HEK293T cells; Right: Cell lysates from HEK293T cells transfected with RC206864 using transfection reagent MegaTran 2.0 (Cat# [TT210002]).