

Product datasheet for **RC206862**

BUD31 (NM_003910) Human Tagged ORF Clone

Product data:

Product Type: Expression Plasmids
Product Name: BUD31 (NM_003910) Human Tagged ORF Clone
Tag: Myc-DDK
Symbol: BUD31
Synonyms: Cwc14; EDG-2; EDG2; fSAP17; G10; YCR063W
Mammalian Cell Selection: Neomycin
Vector: pCMV6-Entry (PS100001)
E. coli Selection: Kanamycin (25 ug/mL)
ORF Nucleotide Sequence: >RC206862 ORF sequence
Red=Cloning site Blue=ORF Green=Tags(s)

TTTTGTAATACGACTCACTATAGGGCGGCCGGAATTCGTCGACTGGATCCGGTACCGAGGAGATCTGCC
GCC**CGATCGCC**

ATGCCTAAAGTCAAAGAAGCCGAAAGCACCCCCAGATGGCTGGGAGTTGATTGAGCCAACACTGGATG
AATTAGATCAAAGATGAGAGAAGCTGAAACAGAACCGCATGAGGGAAAGAGGAAAGTGGAAATCTCTGTG
GCCCATCTTCAGGATCCACCACCAGAAAACCCGCTACATCTTCGACCTCTTTACAAGCGGAAAGCCATC
AGCAGAGAAGCTATGAATATTGTATTAAGAAGGCTATGCAGACAAAAACCTGATTGCAAATGGAAAA
AGCAAGGATATGAGAAGTTGTGCTGCCTGCGGTGCATTCAGACACGGGACCAACTTCGGGACGAACTG
CATCTGCCGCGTGCCCAAAGCAAGCTGGAAGTGGGCCGCATCATCGAGTGCACACACTGTGGCTGTCGT
GGCTGCTCTGGC

ACGCGTACGCGGCCGCTCGAGCAGAACTCATCTCAGAAGAGGATCTGGCAGCAAATGATATCCTGGATT
ACAAGGATGACGACGATAAGGTTTAA

Protein Sequence: >RC206862 protein sequence
Red=Cloning site Green=Tags(s)
MPKVRSRKAPPDGWELIEPTLDELQKMREAETEPHEGKRKVESLWPIFRHHQKTRYIFDLFYKRKAI
SRELYEYCIKEGYADKNLIAKWKQGYENLCCLRICIQTRDTNFGTNCICRVPSKLEVGRIIECTHCGR
GCSG

TRTRPLEQKLISEEDLAANDILDYKDDDDKV

Chromatograms: https://cdn.origene.com/chromatograms/mk6426_a11.zip



[View online »](#)

Restriction Sites: SgfI-MluI

Cloning Scheme:



ACCN: NM_003910

ORF Size: 432 bp

OTI Disclaimer: The molecular sequence of this clone aligns with the gene accession number as a point of reference only. However, individual transcript sequences of the same gene can differ through naturally occurring variations (e.g. polymorphisms), each with its own valid existence. This clone is substantially in agreement with the reference, but a complete review of all prevailing variants is recommended prior to use. [More info](#)

OTI Annotation: This clone was engineered to express the complete ORF with an expression tag. Expression varies depending on the nature of the gene.

Components: The ORF clone is ion-exchange column purified and shipped in a 2D barcoded Matrix tube containing 10ug of transfection-ready, dried plasmid DNA (reconstitute with 100 ul of water).

Reconstitution Method:

1. Centrifuge at 5,000xg for 5min.
2. Carefully open the tube and add 100ul of sterile water to dissolve the DNA.
3. Close the tube and incubate for 10 minutes at room temperature.
4. Briefly vortex the tube and then do a quick spin (less than 5000xg) to concentrate the liquid at the bottom.
5. Store the suspended plasmid at -20°C. The DNA is stable for at least one year from date of shipping when stored at -20°C.

RefSeq: [NM_003910.4](#)

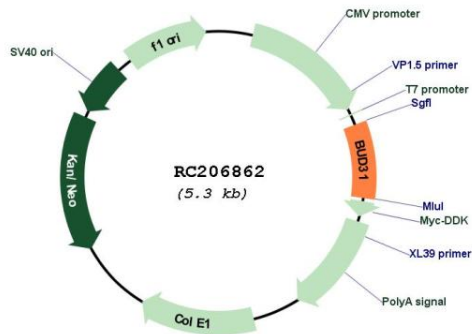
RefSeq Size: 1060 bp

RefSeq ORF: 435 bp

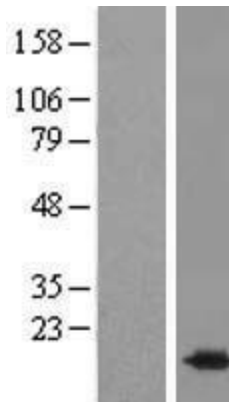
Locus ID: 8896

UniProt ID: [P41223](#)
Cytogenetics: 7q22.1
Domains: G10
Protein Families: Transcription Factors
Protein Pathways: Spliceosome
MW: 17 kDa
Gene Summary: Involved in the pre-mRNA splicing process (PubMed:28502770, PubMed:28076346). May play a role as regulator of AR transcriptional activity; may increase AR transcriptional activity (PubMed:25091737).[UniProtKB/Swiss-Prot Function]

Product images:



Circular map for RC206862



Western blot validation of overexpression lysate (Cat# [LY418340]) using anti-DDK antibody (Cat# [TA50011-100]). Left: Cell lysates from untransfected HEK293T cells; Right: Cell lysates from HEK293T cells transfected with RC206862 using transfection reagent MegaTran 2.0 (Cat# [TT210002]).