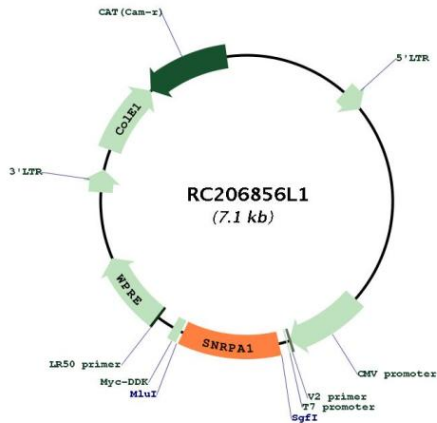
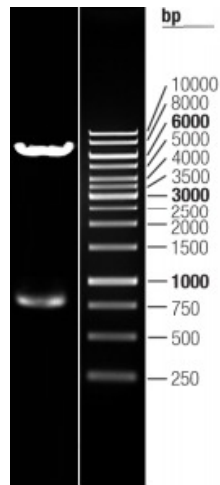


OTI Disclaimer:	The molecular sequence of this clone aligns with the gene accession number as a point of reference only. However, individual transcript sequences of the same gene can differ through naturally occurring variations (e.g. polymorphisms), each with its own valid existence. This clone is substantially in agreement with the reference, but a complete review of all prevailing variants is recommended prior to use. More info
OTI Annotation:	This clone was engineered to express the complete ORF with an expression tag. Expression varies depending on the nature of the gene.
Components:	The ORF clone is ion-exchange column purified and shipped in a 2D barcoded Matrix tube containing 10ug of transfection-ready, dried plasmid DNA (reconstitute with 100 ul of water).
Reconstitution Method:	<ol style="list-style-type: none">1. Centrifuge at 5,000xg for 5min.2. Carefully open the tube and add 100ul of sterile water to dissolve the DNA.3. Close the tube and incubate for 10 minutes at room temperature.4. Briefly vortex the tube and then do a quick spin (less than 5000xg) to concentrate the liquid at the bottom.5. Store the suspended plasmid at -20°C. The DNA is stable for at least one year from date of shipping when stored at -20°C.
RefSeq:	NM_003090.2
RefSeq Size:	1068 bp
RefSeq ORF:	768 bp
Locus ID:	6627
UniProt ID:	P09661
Cytogenetics:	15q26.3
Domains:	LRR, LRRcap
Protein Families:	Druggable Genome
Protein Pathways:	Spliceosome
MW:	28.4 kDa
Gene Summary:	Involved in pre-mRNA splicing as component of the spliceosome (PubMed:11991638, PubMed:28502770, PubMed:28781166, PubMed:28076346, PubMed:27035939). Associated with sn-RNP U2, where it contributes to the binding of stem loop IV of U2 snRNA (PubMed:9716128, PubMed:27035939).[UniProtKB/Swiss-Prot Function]

Product images:



Circular map for RC206856L1



Double digestion of RC206856L1 using SgfI and MluI