

Product datasheet for **RC206854**

TBX6 (NM_004608) Human Tagged ORF Clone

Product data:

Product Type:	Expression Plasmids
Product Name:	TBX6 (NM_004608) Human Tagged ORF Clone
Tag:	Myc-DDK
Symbol:	TBX6
Synonyms:	SCDO5
Mammalian Cell Selection:	Neomycin
Vector:	pCMV6-Entry (PS100001)
E. coli Selection:	Kanamycin (25 ug/mL)



[View online »](#)

ORF Nucleotide Sequence:

>RC206854 ORF sequence
 Red=Cloning site Blue=ORF Green=Tags(s)

TTTTGTAATACGACTCACTATAGGGCGGCCGGAATTCGTCGACTGGATCCGGTACCGAGGAGATCTGCC
 GCC**CGGATCGCC**

ATGTACCATCCACGAGAATTGTACCCGTCCTGGGGCCGGCTACCGCCTGGGGCCGCCAACCTGGGG
 CCGACTCCAGCTTCCCACCCGCCCTAGCGGAGGGCTACCGCTACCCGAACTGGACACCCCTAAACTGGA
 TTGCTTCTCTCCGGGATGGAGGCTGCTCCCGCACCCCTGGCCGCGCACCCACCTCTGCCCTTCTGCC
 CCTGCCATGGGCACTGAGCCGGCCCATCAGCTCCAGAGGCCCTCCATTCCCTCCCGGGGTGAGCCTGA
 GCCTGGAGAACCAGGAGCTATGGAAGGAGTTCAGCTCTGTGGAAACAGAAATGATCATCACCAAAGCTGG
 GAGGCGCATGTTCCCTGCCTGCCGAGTGCAGTACTGGCCTGGACCCGAGGCCGCTACTTGTTCCTT
 CTGGATGTGATTCGGTGGATGGGGCTCGCTACCGCTGGCAGGGCCGGCGCTGGGAGCCAGCGGAAGG
 CAGAGCCCGCCTGCCTGACCGTGTCTACATTACCCCGACTCTCCTGCCACTGGTGACATTGGATGCG
 GCAGCCTGTGTCTTCCATCGTGTCAAGCTCACCAACAGCACGCTGGACCCACGCGCCACTGATCCTG
 CACTCCATGCACAAGTACCAACCCCGCATACACCTAGTTCGGGCAGCCAGCTCTGCAGCCAGCACTGGG
 GGGCATGGCCTCCTTCCGCTTCCCGAGACCACATTCATCTCCGTGACAGCCTACCAGAACCACAGAT
 CACACAATGAAGATTGCAGCAATCCCTTTGCCAAAGGCTTCCGGGAGAACGGCAGAACTGTAAGAGG
 GAGCGAGACGCCCGTGTGAAGAGGAACTGCGGGGCCAGAGCCAGCAGCCACAGAGGCCTATGGGAGCG
 GAGACACACCAGGTGGTCCCTGCGACTCCACCCCTGGGTGGAGACATTCGTGAATCAGATCCAGAACAGGC
 CCCAGCCCCGGGAAGCCACCGCTGCCCGGCACCTCTGTGTGGTGGCCCCAGTGTGAGGCCTACCTC
 CTGCACCTGCGGCTTCCATGGGGCCCCAGTCACTTCCCACCAGGAGCCAGCTTCCCGGAGGCTC
 CAGACTCCGGGCGCTCAGCCCCCTACTCGGCTGCATTTCTGGAGCTGCCGCACGGGTGAGGGGCTCCGG
 GTACCCAGCGGCTCCACCGCGGTACCCTTTGCCCGCACTTTCTCCAAGGGGGCCCTTCCCTTACCA
 TACACCGCGCTGGGGCTATCTGGATGTGGGCTCCAACCCATGTAC

ACGCGTACGCGGCCGCTCGAGCAGAACTCATCTCAGAAGAGGATCTGGCAGCAATGATATCCTGGATT
 ACAAGGATGACGACGATAAGGTTTAA

Protein Sequence:

>RC206854 protein sequence
 Red=Cloning site Green=Tags(s)

MYHPREL YPSLGAGYRLGPAQPGADSSFPPALAEYRYPELDTPKLDCFLSGMEAPRTLAHPPLPLLP
 PAMGTEPAPSAPEALHSLPGVSLLENRELWKEFSSVGTMIITKAGRRMFACRVSVTGLDPEARYLFL
 LDVIPVDGARYRWQRRWEPGKAEPRLPDRVYIHPDSPATGAHWMRQPVSFHRVKLTNSTLDPHGLIL
 HSMHKYQPRIHLVRAAQLCSQHWGGMASFRFPETTFISVTAYQNPQITQLKIAANPFKGFRENGRNCKR
 ERDARVKRKLRGPEPAATEAYGSGDTPGGPCDSTLGGDIRESPEQAPAPGEATAAPAPLCGGPSAEAYL
 LHPAAFHGAPSHLPTRSPSFPEAPDSGRSAPYSAAFLELPHGSGSGYPAAPPAVPFAPHFLQGGPFPLP
 YTAPGGYLDVGSKPMY

TRTRPLEQKLISEEDLAANDILDYKDDDDKV

Chromatograms:

https://cdn.origene.com/chromatograms/mk6672_a05.zip

Restriction Sites:

SgfI-MluI

Cloning Scheme:


ACCN: NM_004608

ORF Size: 1308 bp

OTI Disclaimer: The molecular sequence of this clone aligns with the gene accession number as a point of reference only. However, individual transcript sequences of the same gene can differ through naturally occurring variations (e.g. polymorphisms), each with its own valid existence. This clone is substantially in agreement with the reference, but a complete review of all prevailing variants is recommended prior to use. [More info](#)

OTI Annotation: This clone was engineered to express the complete ORF with an expression tag. Expression varies depending on the nature of the gene.

Components: The ORF clone is ion-exchange column purified and shipped in a 2D barcoded Matrix tube containing 10ug of transfection-ready, dried plasmid DNA (reconstitute with 100 ul of water).

Reconstitution Method:

1. Centrifuge at 5,000xg for 5min.
2. Carefully open the tube and add 100ul of sterile water to dissolve the DNA.
3. Close the tube and incubate for 10 minutes at room temperature.
4. Briefly vortex the tube and then do a quick spin (less than 5000xg) to concentrate the liquid at the bottom.
5. Store the suspended plasmid at -20°C. The DNA is stable for at least one year from date of shipping when stored at -20°C.

Note: Plasmids are not sterile. For experiments where strict sterility is required, filtration with 0.22um filter is required.

RefSeq: [NM_004608.4](#)

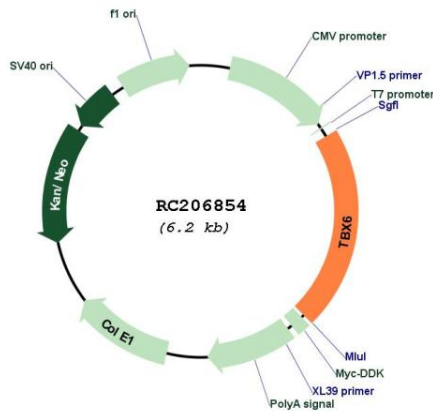
RefSeq Size: 1830 bp

RefSeq ORF: 1311 bp

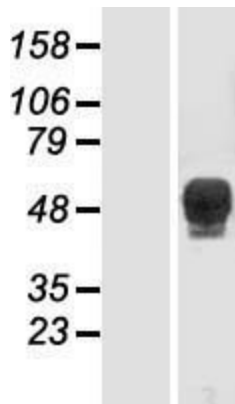
Locus ID: 6911

UniProt ID: [O95947](#)
Cytogenetics: 16p11.2
Protein Families: Transcription Factors
MW: 47 kDa
Gene Summary: This gene is a member of a phylogenetically conserved family of genes that share a common DNA-binding domain, the T-box. T-box genes encode transcription factors involved in the regulation of developmental processes. Knockout studies in mice indicate that this gene is important for specification of paraxial mesoderm structures. [provided by RefSeq, Aug 2008]

Product images:



Circular map for RC206854



Western blot validation of overexpression lysate (Cat# [LY417870]) using anti-DDK antibody (Cat# [TA50011-100]). Left: Cell lysates from untransfected HEK293T cells; Right: Cell lysates from HEK293T cells transfected with RC206854 using transfection reagent MegaTran 2.0 (Cat# [TT210002]).