

Product datasheet for **RC206853**

GRB10 (NM_001001555) Human Tagged ORF Clone

Product data:

Product Type:	Expression Plasmids
Product Name:	GRB10 (NM_001001555) Human Tagged ORF Clone
Tag:	Myc-DDK
Symbol:	GRB10
Synonyms:	Grb-10; GRB-IR; IRBP; MEG1; RSS
Vector:	pCMV6-Entry (PS100001)
E. coli Selection:	Kanamycin (25 ug/mL)
Cell Selection:	Neomycin



[View online »](#)

ORF Nucleotide Sequence:

>RC206853 ORF sequence
 Red=Cloning site Blue=ORF Green=Tags(s)

TTTTGTAATACGACTCACTATAGGGCGGCCGGAATTCGTCGACTGGATCCGGTACCGAGGAGATCTGCC
 GCC**CGGATCGCC**

ATGAATGCATCCCTGGAGAGCCTGTACTCGGCCTGCAGCATGCAGTCAGACACGGTGCCCTCCTGCAGA
 ATGGCCAGCATGCCCGCAGCCAGCCTCGGGCTTCAGGCCCTCCTCGGTCCATCCAGCCACAGGTGTCCCC
 AAGGCAGAGGGTGCAGCGCTCCAGCCTGTGCACATCCTCGTGTGAGGGCCTTCAGGAGGAAGACCAG
 CAGTTTAAACCTCATCTCTGCCGGCCATCCCCAATCCTTTTCTGAACTCTGTGGCCCTGGGAGCCCC
 CTGTGCTCACGCCGGTTCTTTACCTCCGAGCCAGGCCGCGCAAAGCAGGATGTTAAAGCTTTTAGTGA
 AGATGGGACAAGCAAAGTGGTGGAGATTCTAGCAGACATGACAGCCAGAGACCTGTGCCAATTGCTGGTT
 TACAAAAGTCACTGTGTGGATGACAACAGCTGGACACTAGTGGAGCACCACCCGCACCTAGGATTAGAGA
 GGTGCTTGAAGACCATGAGCTGGTGGTCCAGGTGGAGAGTACCATGGCCAGTGAAGTAAATTTCTATT
 CAGGAAGAATTACGAAAATACGAGTTCTTTAAAAATCCCATGAATTTCTCCAGAACAGATGGTTACT
 TGGTGCCAGCAGTCAAATGGCAGTCAAACCCAGCTTTTGCAGAATTTTCTGAACTCCAGTAGTTGTCCTG
 AAATCAAGGGTTTTTGCATGTGAAAGAGCTGGGAAAGAAATCATGGAAAAGCTGTATGTGTGTTGCG
 GAGATCTGGCCTTTATTGCTCCACCAAGGGAATTCAAAGGAACCCAGACACCTGCAGCTGCTGGCCGAC
 CTGGAGGACAGCAACATCTTCTCCCTGATCGCTGGCAGGAAGCAGTACAACGCCCTACAGACCAGGGC
 TCTGCATAAAGCCAAACAAAGTCAAGTAAAGACTAAAGAGCTGAGGTTGCTCTGTGCAGAGGACGAGCA
 AACCAGGACGTGCTGGATGACAGCGTTCAGACTCCTCAAGTATGGAATGCTCCTTTACCAGAATTACCGA
 ATCCCTCAGCAGAGGAAGCCTTGCTGTCCCGTTCTCGACGCCAGTGGCAGTGTCTCCGAGAATCCC
 TCGTGGCAATGGATTTTCTGGCAAAACAGGACGCGTGATAGAGAATCCGGCGGAGGCCCCAGAGCGCAGC
 CCTGGAGGAGGGCCACGCTGGAGGAAGCGAAGCACACGGATGAACATCCTAGGTAGCCAAAGTCCCTC
 CACCCTTCTACCCTAAGTACAGTATTACAGGACACAGCACTGGTTTACGGGAGGATCTCCAGGAGG
 AATCCACAGGATCATTAAACAGCAAGGCTCGTGGATGGGCTTTTTCTCCTCCGTGACAGCCAGAGTAA
 TCCAAAGGCATTTGACTCACACTGTGTCATCACCAGAAAATAAAAATTTCCAGATCTTACCTTGCAG
 GACGACGGGCAGACGTTCTTACGCTAGATGACGGGAACACCAAATTTCTGACCTGATCCAGCTGGTTG
 ACTTTTACCAGCTGAACAAAGGAGTCTGCCTTGCAAATCAAGCACCCTGCATCCGAGTGGCCTTA

AG**CGGACCG**ACGCGTACGCGGCCGCTCGAGCAGAACTCATCTCAGAAGAGGATCTGGCAGCAAATGATATCC
 TGGATTACAAGGATGACGACGATAAGGTTTAA

Protein Sequence:

>RC206853 protein sequence
 Red=Cloning site Green=Tags(s)

MNASLESLSACSMSQSDTVPLLQNGQHARSQPRASGPPRSIQPVSPRQVRQRSQPVHILAVRRLQEEDQ
 QFRTSSLPAINPFPPELCPGSPVLPVTPGSLPPSQAQAAKQDVKVFSEDGTSKVVVEILADMTARDLCQLLV
 YKSHCVDNNSWTLVEHHPHLGLERCLEDELHVQVESTMASESKFLFRKNYAKYEFFKNPMNFFPEQMVT
 WCQQSNGSQTQLLQNFNLSSSCPEIQGFLHVKELGKKSWKLYVCLRRSGLYCSTKGTKEPRHLQLLAD
 LEDSNIFSLIAGRQYNAPTDHGLCIKPNKVRNETKELRLLCAEDEQTRTCWMTAFRLLYGMLLYQNYR
 IPQQRKALLSPFSTPVRSVSENSLVAMDFSGTGRVIENPAEAQSAALEEGHAWRKRSTRMNIILGSQSPL
 HPSTLSTVIHRTQHWFHGRISREESHRIKQQLVDGLFLLRDSQSNPKAFVLTLCCHQKIKNFQILPCE
 DDGQTFSLDDGNTKFSDLIQLVDFYQLNKGVLPCCLKHHCIRVAL

SGP**TRTRPLEQKLI**SEEDLAANDILDYKDDDDK**V**

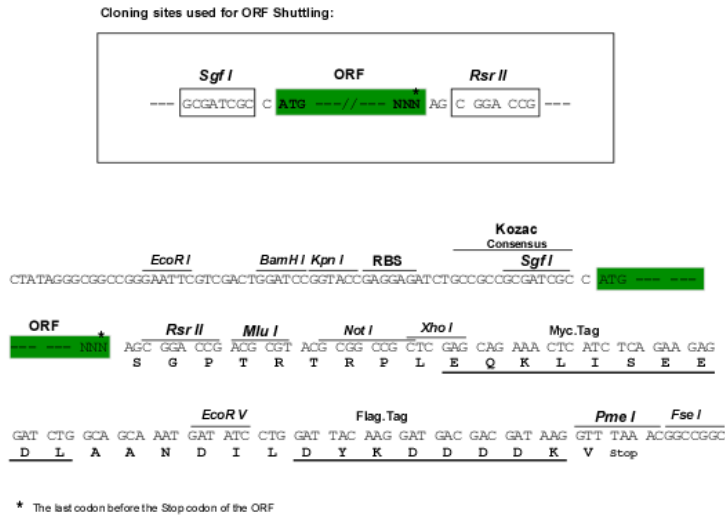
Chromatograms:

https://cdn.origene.com/chromatograms/mk6618_g06.zip

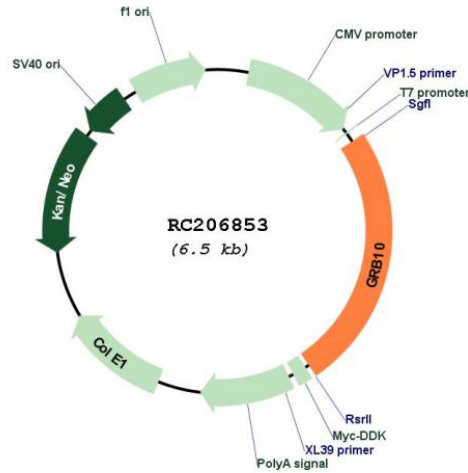
Restriction Sites:

SgfI-RsrII

Cloning Scheme:



Plasmid Map:

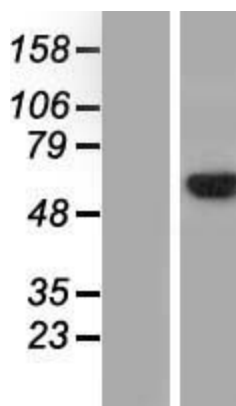


ACCN:

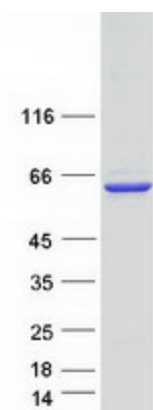
NM_001001555

ORF Size:	1608 bp
OTI Disclaimer:	The molecular sequence of this clone aligns with the gene accession number as a point of reference only. However, individual transcript sequences of the same gene can differ through naturally occurring variations (e.g. polymorphisms), each with its own valid existence. This clone is substantially in agreement with the reference, but a complete review of all prevailing variants is recommended prior to use. More info
OTI Annotation:	This clone was engineered to express the complete ORF with an expression tag. Expression varies depending on the nature of the gene.
RefSeq:	NM_001001555.1 , NM_001001555.2 , NP_001001555.1
RefSeq Size:	5040 bp
RefSeq ORF:	1611 bp
Locus ID:	2887
Protein Families:	Druggable Genome
MW:	60.8 kDa
Gene Summary:	The product of this gene belongs to a small family of adapter proteins that are known to interact with a number of receptor tyrosine kinases and signaling molecules. This gene encodes a growth factor receptor-binding protein that interacts with insulin receptors and insulin-like growth-factor receptors. Overexpression of some isoforms of the encoded protein inhibits tyrosine kinase activity and results in growth suppression. This gene is imprinted in a highly isoform- and tissue-specific manner, with expression observed from the paternal allele in the brain, and from the maternal allele in the placental trophoblasts. Alternatively spliced transcript variants encoding different isoforms have been identified. [provided by RefSeq, Oct 2010]

Product images:



Western blot validation of overexpression lysate (Cat# [LY424375]) using anti-DDK antibody (Cat# [TA50011-100]). Left: Cell lysates from untransfected HEK293T cells; Right: Cell lysates from HEK293T cells transfected with [RC220822] using transfection reagent MegaTran 2.0 (Cat# [TT210002]).



Coomassie blue staining of purified GRB10 protein (Cat# [TP306853]). The protein was produced from HEK293T cells transfected with GRB10 cDNA clone (Cat# RC206853) using MegaTran 2.0 (Cat# [TT210002]).