

Product datasheet for **RC206851**

DYNC1LI2 (NM_006141) Human Tagged ORF Clone

Product data:

Product Type:	Expression Plasmids
Product Name:	DYNC1LI2 (NM_006141) Human Tagged ORF Clone
Tag:	Myc-DDK
Symbol:	DYNC1LI2
Synonyms:	DNCLI2; LIC2
Mammalian Cell Selection:	Neomycin
Vector:	pCMV6-Entry (PS100001)
E. coli Selection:	Kanamycin (25 ug/mL)



[View online »](#)

ORF Nucleotide Sequence:

>RC206851 ORF sequence
 Red=Cloning site Blue=ORF Green=Tags(s)

TTTTGTAATACGACTCACTATAGGGCGGCCGGGAATTCGTCGACTGGATCCGGTACCGAGGAGATCTGCC
 GCC**CGCATCGCC**

ATGGCCCGGTGGGGTGGAGAAGAAGCTGCTGCTAGGTCCCAACGGGCCCGCGGTGGCGGCCCGCGGC
 ACCTGACCAGTGAGGAGGAGGAAGGCCAGAGCCTATGGTCTCCATTCTGAGCGAAGTGCCACCCGCGC
 CAGGTCCAAGCTGCCGTCGGCAAGAACATCCTGGTCTTCGGTGAAGATGGTTCTGGTAAAAACAACCCTC
 ATGACTAAACTACAAGGAGCTGAGCATGGCAAAAAAGGAAGAGGCCTAGAATATCTCTACCTCAGTGTC
 ATGATGAGGACCGAGATGATCACACGCGCTGCAACGTGTGGATTCTGGATGGAGACTTGTACCACAAAGG
 CCTGCTGAAATTTGCAGTTTCTGCTGAATCCTTGCCAGAGACCCTCGTCATTTTTTGTGCAGACATGCT
 AGACCTTGGACTGTGATGGAATCTCTGCAGAAATGGGCTAGTGTTCACGTGAGCACATTGATAAAATGA
 AAATCCACCAGAAAAATGAGGGAGCTGGAACGGAAGTTTGTAAAGATTTTCAAGACTATATGGAACC
 TGAAGAAGTTGTCAAGTTCCCCACAGAGAAGAGGCCCTCTGACCTCAGGCTCCGATGAAGAAAATGTT
 GCCTGCCTCTGGGTGACAAATGTCTGACTCATACCTGGGGATCCCGGTGTTGGTGGTGTGCACAAAGT
 GTGATGCGGTGAGTGTCTGGAGAAGGAGCAGATTACAGGGATGAGCATTTGGACTTTATCCAGTCACA
 CCTGCGGAGGTTCTGCCTTCAGTATGGAGCTGCCTTGATTTACACATCAGTAAAAGAGAAAAACCTC
 GACTTGTGTATAAGTATATTGTTTCATAAAACATACGGTTTCCACTTCACCACACCTGCCTTAGTTGTGG
 AAAAGGATGCCGTTTTTACCTGCAGGCTGGGACAATGAAAAGAAAATAGCTATTTTACATGAAAAATTT
 TACAACCGTGAAGCCGGAAGATGCATATGAAGACTTTATTGTGAAACCTCCCGTGAGAAAGCTGGTCCAC
 GACAAAGAGTTGGCAGCAGAAGATGAGCAGGTGTTCTTAATGAAGCAACAGTCACTCCTTGCCAAGCAAC
 CAGCCACTCCCACGAGAGCTTCTGAATCTCTGCAAGAGGACCCCTCGGCTCTCCAAGGACCCAGGGTCG
 GGGAGGGCCAGCCAGTGTGCCTAGCTCCTCCCCAGGCACGTAGTAAAAAAGCCAGACCCAAACATCAAA
 AATAATGCAGCAAGTGAAGGGTGTGGCCAGCTTCTTCAACAGTCTGTTGAGTAAAAAGACAGGCTCTC
 CTGGAAGTCTGGTGTGGTGGGTGCAGAGCACAGCCAAAGAACTCAGGACAAAAGACTGTGTTGTCAAA
 TGTTTCAGGAAGAACTGGATAGAATGACTCGAAAGCCAGACTCTATGGTAACAACTCTTCAACAGAAAAT
 GAAGCC

ACGCGTACGCGGCCGCTCGAGCAGAAACTCATCTCAGAAGAGGATCTGGCAGCAAATGATATCTGGATT
 ACAAGGATGACGACGATAAGGTTTAA

Protein Sequence:

>RC206851 protein sequence
 Red=Cloning site Green=Tags(s)

MAPVGVEKLLLLGPNPVAAGDLTSEEEEGQSLWSSILSEVSTRARSKLPSGKNILVFGEDGSGKTTL
 MTKLQGAEHGKKGRGLELYLSVHDEDRDDHTRCNVWILDGDLYHKGLLKFVSAESLPETLVIFVADMS
 RPWTVMESLQKVASVLRHIDKMKIPPEKMRELERKFVKDFQDYMEPEEGCQSPQRRGPLTSGSDEENV
 ALPLGDNVLTNHLGIPVLVVCTKDAVSVLEKEHDYRDEHLDFIQSHLRRFCLQYGAALIYTSVKEEKNL
 DLLYKYIVHKTYGFHFTTPALVVEKDAVFIKAGWDNEKKIAILHENFTTVKPEDAYEDFIVKPPVRKLVH
 DKELAAEDEQVFLMKQSSLLAKQPATPTRAESPARGPSGSPRTQGRGGPASVSSSPGTSVKKPDPNIK
 NNAASEGVLASFFNSLLSKKTGSPGSPGAGGVQSTAKNSGQKTVLSNVQEELDRMTRKPDMSMVTNSSTEN
 EA

TRTRPLEQKLISEEDLAANDILDYKDDDDKV

Chromatograms:

https://cdn.origene.com/chromatograms/mk6564_b07.zip

Restriction Sites:

Sgfl-Mlul

Cloning Scheme:


ACCN: NM_006141

ORF Size: 1476 bp

OTI Disclaimer: The molecular sequence of this clone aligns with the gene accession number as a point of reference only. However, individual transcript sequences of the same gene can differ through naturally occurring variations (e.g. polymorphisms), each with its own valid existence. This clone is substantially in agreement with the reference, but a complete review of all prevailing variants is recommended prior to use. [More info](#)

OTI Annotation: This clone was engineered to express the complete ORF with an expression tag. Expression varies depending on the nature of the gene.

Components: The ORF clone is ion-exchange column purified and shipped in a 2D barcoded Matrix tube containing 10ug of transfection-ready, dried plasmid DNA (reconstitute with 100 ul of water).

- Reconstitution Method:**
1. Centrifuge at 5,000xg for 5min.
 2. Carefully open the tube and add 100ul of sterile water to dissolve the DNA.
 3. Close the tube and incubate for 10 minutes at room temperature.
 4. Briefly vortex the tube and then do a quick spin (less than 5000xg) to concentrate the liquid at the bottom.
 5. Store the suspended plasmid at -20°C. The DNA is stable for at least one year from date of shipping when stored at -20°C.

RefSeq: [NM_006141.3](#)

RefSeq Size: 4352 bp

RefSeq ORF: 1479 bp

Locus ID: 1783

UniProt ID: [O43237](#)

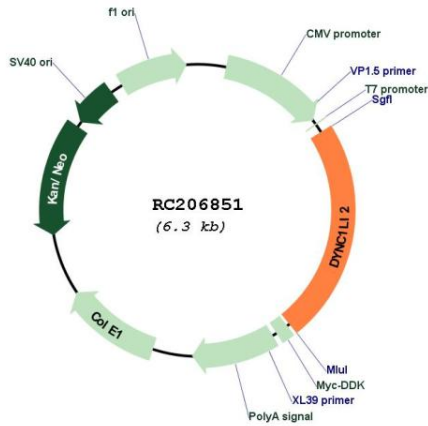
Cytogenetics: 16q22.1

Protein Families: Druggable Genome

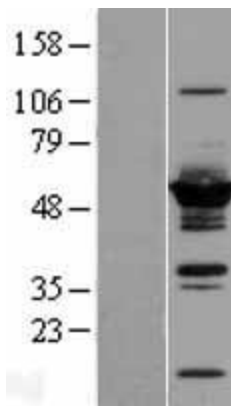
MW: 54.1 kDa

Gene Summary: Cytoplasmic dynein is a microtubule-associated motor protein (Hughes et al., 1995 [PubMed 7738094]). See DYNC1H1 (MIM 600112) for general information about dyneins.[supplied by OMIM, Mar 2008]

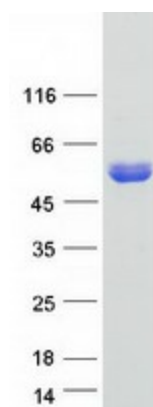
Product images:



Circular map for RC206851



Western blot validation of overexpression lysate (Cat# [LY416842]) using anti-DDK antibody (Cat# [TA50011-100]). Left: Cell lysates from untransfected HEK293T cells; Right: Cell lysates from HEK293T cells transfected with RC206851 using transfection reagent MegaTran 2.0 (Cat# [TT210002]).



Coomassie blue staining of purified DYNC1LI2 protein (Cat# [TP306851]). The protein was produced from HEK293T cells transfected with DYNC1LI2 cDNA clone (Cat# RC206851) using MegaTran 2.0 (Cat# [TT210002]).