

## Product datasheet for **RC206846**

### **RBFOX2 (NM\_001031695) Human Tagged ORF Clone**

#### Product data:

Product Type:	Expression Plasmids
Product Name:	RBFOX2 (NM_001031695) Human Tagged ORF Clone
Tag:	Myc-DDK
Symbol:	RBFOX2
Synonyms:	dj106l20.3; Fox-2; FOX2; fxb; HNRBP2; HRNBP2; RBM9; RTA
Mammalian Cell Selection:	Neomycin
Vector:	pCMV6-Entry (PS100001)
E. coli Selection:	Kanamycin (25 ug/mL)
ORF Nucleotide Sequence:	>RC206846 ORF sequence Red=Cloning site Blue=ORF Green=Tags(s)

TTTTGTAATACGACTCACTATAGGGCGCCGGGAATTCGTCGACTGGATCCGGTACCGAGGAGATCTGCC  
GCC**CGATCGCC**

ATGGAGAAAAAGAAAATGGTAACTCAGGGTAACCGAGCCGACAACAACCTCTGACGCAATGGTTCAGC  
CTTTTACTACCATCCATTTCCACCACCTCCGAGAATGGAATCCACAGAGTATGGGGTGCCACACAC  
TCAAGACTATGCCGGCCAGACCGGTGAGCATAACCTGACACTCTACGGAAGTACGCAAGCCACGGGGAG  
CAGAGCAGCAACTCACCCAGCACAAAAATGGATCTCTTACGACAGAAGTGGAGCACAGACAGACGGCC  
AGCAGTCACAGACACAAAGTAGTAAAAATTCAGAGAGTAAATCTACCCCGAAACGGCTGCATGTCTCTAA  
TATTCTTTCCGCTTCCGGGACCCTGACCTCCGGCAGATGTTGGGCAGTTTGGCAAAATCCTAGATGTA  
GAAATAATCTTTAATGAACGTGGCTCTAAGGGATTCCGGTTCGTAACCTTCGAGAATAGTGTGATGCAG  
ACAGGGCCAGGGAGAAATTACACGGCACCGTGGTAGAGGGCCGTAATAATCGAGGTGAATAATGCTACAGC  
ACGTGTAATGACCAATAAGAAGATGGTCACACCATATGCAATGGTTGGAAATTAAGCCAGTAGTTGGA  
GCTGTATATGGTCCGGAGTTATATGCAGCATCCAGCTTCAAGCAGATGTGTCCCTAGGCAATGATGCAG  
CAGTGCCCTATCAGGAAGAGGGGGTATCAACACTTACATTCTTTAATCAGTCTCCCTTAGTTCCTGG  
CTTCCCTTACCCTACTGCAGCCACCACGGCAGCCGCTTTCAGAGGAGCCCATTTGAGGGGCAGAGGGCGG  
ACAGTATATGGTGCAGTCCGAGCGGTACCTCCAACAGCCATCCCGCCTATCCAGGTGTGGTTTACCAGG  
ACGGATTTTACGGTGTGACCTCTATGGTGGATATGCAGCCTACAGATATGCACAGCCTGCTACTGCAAC  
CGCAGCCACCCTGCTGCAGCCGCTGCAGCCGCTTACAGTGACGGTTATGGCAGGGTGTACACAGCCGAC  
CCCTACCATGCCCTTGCCCTGCCCTAGCTATGGAGTTGGCGCTGTGGCGAGTTTATACCGAGGTGGCT  
ACAGCCGATTTGCCCTAC

**ACCGT**ACGGGGCCGCTCGAGCAGAACTCATCTCAGAAGAGGATCTGGCAGCAATGATATCCTGGATT  
ACAAGGATGACGACGATAAGGTTTAA



[View online >](#)



**Reconstitution Method:**

1. Centrifuge at 5,000xg for 5min.
2. Carefully open the tube and add 100ul of sterile water to dissolve the DNA.
3. Close the tube and incubate for 10 minutes at room temperature.
4. Briefly vortex the tube and then do a quick spin (less than 5000xg) to concentrate the liquid at the bottom.
5. Store the suspended plasmid at -20°C. The DNA is stable for at least one year from date of shipping when stored at -20°C.

**RefSeq:** [NM\\_001031695.4](#)

**RefSeq Size:** 6997 bp

**RefSeq ORF:** 1143 bp

**Locus ID:** 23543

**UniProt ID:** [O43251](#)

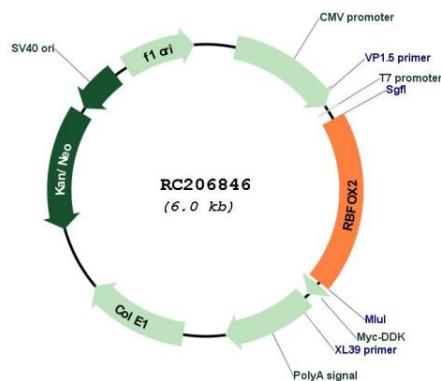
**Cytogenetics:** 22q12.3

**Protein Families:** Druggable Genome, Transcription Factors

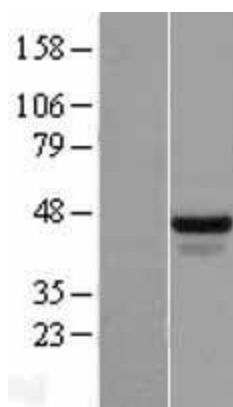
**MW:** 40.4 kDa

**Gene Summary:** This gene is one of several human genes similar to the *C. elegans* gene Fox-1. This gene encodes an RNA binding protein that is thought to be a key regulator of alternative exon splicing in the nervous system and other cell types. The protein binds to a conserved UGCAUG element found downstream of many alternatively spliced exons and promotes inclusion of the alternative exon in mature transcripts. The protein also interacts with the estrogen receptor 1 transcription factor and regulates estrogen receptor 1 transcriptional activity. Multiple transcript variants encoding different isoforms have been found for this gene. [provided by RefSeq, Jul 2008]

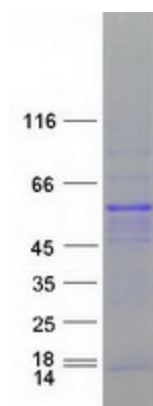
## Product images:



Circular map for RC206846



Western blot validation of overexpression lysate (Cat# [LY421906]) using anti-DDK antibody (Cat# [TA50011-100]). Left: Cell lysates from untransfected HEK293T cells; Right: Cell lysates from HEK293T cells transfected with RC206846 using transfection reagent MegaTran 2.0 (Cat# [TT210002]).



Coomassie blue staining of purified RBFOX2 protein (Cat# [TP306846]). The protein was produced from HEK293T cells transfected with RBFOX2 cDNA clone (Cat# RC206846) using MegaTran 2.0 (Cat# [TT210002]).