

## Product datasheet for **RC206841L2V**

### ATP6V1H (NM\_015941) Human Tagged ORF Clone Lentiviral Particle

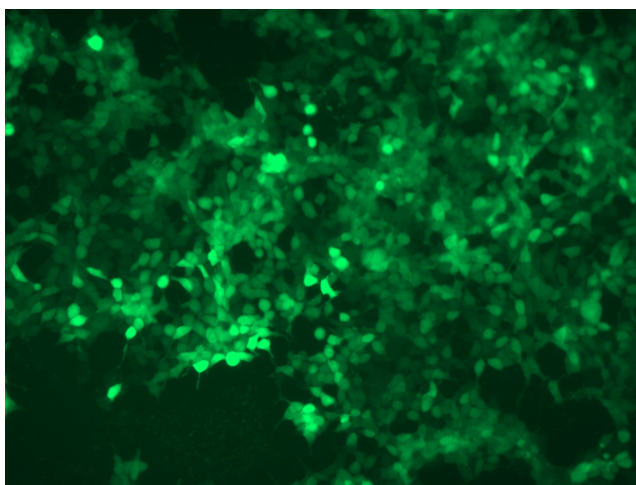
#### Product data:

Product Type:	Lentiviral Particles
Product Name:	ATP6V1H (NM_015941) Human Tagged ORF Clone Lentiviral Particle
Symbol:	ATP6V1H
Synonyms:	CGI-11; MSTP042; NBP1; SFD; SFDalpha; SFDbeta; VMA13
Mammalian Cell Selection:	None
Vector:	pLenti-C-mGFP (PS100071)
Tag:	mGFP
ACCN:	NM_015941
ORF Size:	1449 bp
ORF Nucleotide Sequence:	The ORF insert of this clone is exactly the same as(RC206841).
OTI Disclaimer:	The molecular sequence of this clone aligns with the gene accession number as a point of reference only. However, individual transcript sequences of the same gene can differ through naturally occurring variations (e.g. polymorphisms), each with its own valid existence. This clone is substantially in agreement with the reference, but a complete review of all prevailing variants is recommended prior to use. <a href="#">More info</a>
OTI Annotation:	This clone was engineered to express the complete ORF with an expression tag. Expression varies depending on the nature of the gene.
RefSeq:	<a href="#">NM_015941.2</a>
RefSeq Size:	2186 bp
RefSeq ORF:	1452 bp
Locus ID:	51606
UniProt ID:	<a href="#">Q9UI12</a>
Cytogenetics:	8q11.23
Domains:	V-ATPase_H



[View online »](#)

<b>Protein Pathways:</b>	Epithelial cell signaling in Helicobacter pylori infection, Lysosome, Metabolic pathways, Oxidative phosphorylation, Vibrio cholerae infection
<b>MW:</b>	55.9 kDa
<b>Gene Summary:</b>	This gene encodes a component of vacuolar ATPase (V-ATPase), a multisubunit enzyme that mediates acidification of intracellular organelles. V-ATPase-dependent organelle acidification is necessary for multiple processes including protein sorting, zymogen activation, receptor-mediated endocytosis, and synaptic vesicle proton gradient generation. The encoded protein is the regulatory H subunit of the V1 domain of V-ATPase, which is required for catalysis of ATP but not the assembly of V-ATPase. Decreased expression of this gene may play a role in the development of type 2 diabetes. Alternatively spliced transcript variants encoding multiple isoforms have been observed for this gene. [provided by RefSeq, May 2012]

**Product images:**

[RC206841L2] was used to prepare Lentiviral particles using [TR30037] packaging kit. HEK293T cells were transduced with RC206841L2V particle to overexpress human ATP6V1H-mGFP fusion protein.