

Product datasheet for **RC206841**

ATP6V1H (NM_015941) Human Tagged ORF Clone

Product data:

Product Type:	Expression Plasmids
Product Name:	ATP6V1H (NM_015941) Human Tagged ORF Clone
Tag:	Myc-DDK
Symbol:	ATP6V1H
Synonyms:	CGI-11; MSTP042; NBP1; SFD; SFDalpha; SFDbeta; VMA13
Mammalian Cell Selection:	Neomycin
Vector:	pCMV6-Entry (PS100001)
E. coli Selection:	Kanamycin (25 ug/mL)



[View online »](#)

ORF Nucleotide Sequence:

>RC206841 ORF sequence
 Red=Cloning site Blue=ORF Green=Tags(s)

TTTTGTAATACGACTCACTATAGGGCGGCCGGAATTCGTCGACTGGATCCGGTACCGAGGAGATCTGCC
 GCC**CGGATCGCC**

ATGACCAAAATGGATATCCGAGGTGCTGTGGATGCTGCTGCCACCAATATTATTGCTGCCAAGGCTG
 CAGAAGTTCGTGCAAAACAAGTCAACTGGCAATCCTATCTTCAGGGACAGATGATTTCTGCTGAAGATTG
 TGAGTTTATTCAGAGTTTGAATGAAACGAAGCCCTGAAGAGAAGCAAGAGATGCTTCAAACCTGAAGGC
 AGCCAGTGTGCTAAAACATTTATAAATCTGATGACTCATATCTGCAAAGAACAGACCGTTTCAGTATATAC
 TAACTATGGTGGATGATATGCTGCAGGAAAATCATCAGCGTGTAGCATTCTTTGACTATGCAAGATG
 TAGCAAGAACACTGCGTGGCCCTACTTTCTGCCAATGTTGAATCGCCAGGATCCCTTCACTGTTCATATG
 GCAGCAAGAATTATTGCCAAGTTAGCAGCTTGGGAAAAGAAGTATGGAAGGCAGTGACTTAAATTACT
 ATTTCAATTGGATAAAAACCTCAGCTGAGTTCACAGAACTGCGTGGTAGCGGTGTTGCTGTTGAAACAGG
 AACAGTCTCTCAAGTGATAGTTCGAGTATGTGCAGTGGTGGCCGGTGTTCGAGCTGATGCTCCGG
 GTC AATAGTACCGCTTTGCTTGGGTGGAAGCAGATGGGGTAAATTCATAATGGGAGTGTGAGTAAAC
 AGTGTGGCTTTCAGCTCCAGTATCAAATGATTTTTTCAATATGGCTCCTGGCATTTCAGTCCCAAATGTG
 TGAACACCTGCGGCGCTATAATATCATTCCAGTCTGTCTGATATCCTTCAGGAGTCTGTCAAAGAGAAA
 GTAACAAGAATCATTCTTGCAGCATTTCGTAACTTTTAGAAAAATCAACTGAAAGAGAACTCGCCAAG
 AATATGCCCTGGCTATGATTTCAGTGCAAAGTCTGAAACAGTTGGAGAAGTTGGAACAGCAGAAGTACGA
 TGATGAAGATATCAGCGAAGATATCAAAATTTCTTTGGAAAACTGGAGAGAGTGTCCAGGACCTTAGT
 TCATTTGATGAATACAGTTCAGAACTTAAATCTGGAAGTTGGAATGGAGTCTGTGCACAAATCTGAGA
 AATTTTGGAGAGAGAATGCTGTGAGGTTAAATGAGAAGAATTGAACTTTGAAAACTTGACAAAACT
 TTTGGAAGTGTGAGATGATCCCCAAGTCTTAGCTGTTGCTGCTCACGATGTTGGAGAATATGTGCGGCAT
 TATCCACGAGGCAACCGGTATCGAGCAGCTCGGTGGGAAGCAGCTGGTTCATGAACCACATGCATCATG
 AAGACCAGCAGTCCGCTATAATGCTCTGCTGGCCGTGCAGAAGCTCATGGTGCACAACTGGGAATACCT
 TGGCAAGCAGCTCCAGTCCGAGCAGCCCCAGCCGCTGCCGCCGAAGC

ACGCGTACGCGGCCGCTCGAGCAGAACTCATCTCAGAAGAGGATCTGGCAGCAATGATATCCTGGATT
 ACAAGGATGACGACGATAAGGTTTAA

Protein Sequence:

>RC206841 protein sequence
 Red=Cloning site Green=Tags(s)

MTKMDIRGAVDAAVPTNIIAAKAAEVRANKVNWQSYLQGQMI SAEDCEF IQRFEMKRSPEEKQEMLQTEG
 SQCAKTFINLMTHICKEQTVQYILTMVDDMLQENHQRVSIFFDYARCSKNTAWPYFLPMLNRQDPFTVHM
 AARI IAKLAAWGKELMEGSDLNYYFNWIKTQLSSQKLRGSGVAVETGTVSSDSSQYVQCVAGCLQLMLR
 VNEYRFAWVEADGVNCGVLSNKGFLQYQMI FSIWLLAFSPQMCEHLRRYNIIPVLSIDILQESVKEK
 VTRIIILAAFRNFLEKSTERETRQYALAMIQCKVLKQLENLEQQKYDDEDI SEDIKFLLEKLGESVQDLS
 SFDEYSSELKSGRLEWSPVHKSEKFWRENAVRLNEKNYELLKILTKLLEVSDDPQVLAVAHDVGEYVRH
 YPRGKRVI EQLGKQLVMNHMHEDQQVRYNALLAVQKLMVHNWEYL GKQLQSEQPQTAAARS

TRTRPLEQKLI SEEDLAANDILDYKDDDDKV

Chromatograms:

https://cdn.origene.com/chromatograms/mk6564_h04.zip

Restriction Sites:

Sgfl-MluI

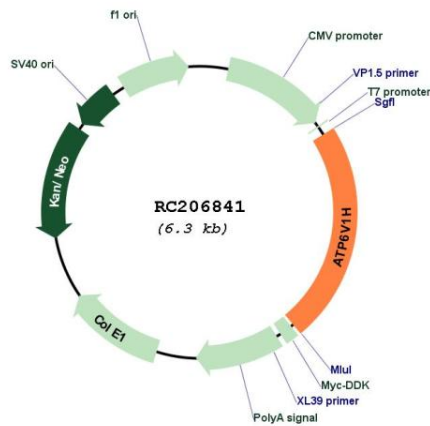
Domains: V-ATPase_H

Protein Pathways: Epithelial cell signaling in Helicobacter pylori infection, Lysosome, Metabolic pathways, Oxidative phosphorylation, Vibrio cholerae infection

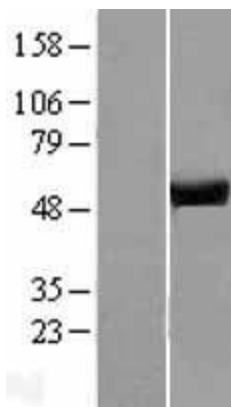
MW: 55.9 kDa

Gene Summary: This gene encodes a component of vacuolar ATPase (V-ATPase), a multisubunit enzyme that mediates acidification of intracellular organelles. V-ATPase-dependent organelle acidification is necessary for multiple processes including protein sorting, zymogen activation, receptor-mediated endocytosis, and synaptic vesicle proton gradient generation. The encoded protein is the regulatory H subunit of the V1 domain of V-ATPase, which is required for catalysis of ATP but not the assembly of V-ATPase. Decreased expression of this gene may play a role in the development of type 2 diabetes. Alternatively spliced transcript variants encoding multiple isoforms have been observed for this gene. [provided by RefSeq, May 2012]

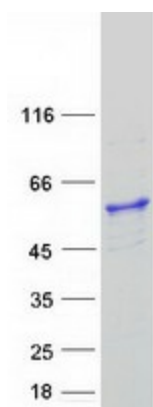
Product images:



Circular map for RC206841



Western blot validation of overexpression lysate (Cat# [LY403892]) using anti-DDK antibody (Cat# [TA50011-100]). Left: Cell lysates from untransfected HEK293T cells; Right: Cell lysates from HEK293T cells transfected with [RC217790] using transfection reagent MegaTran 2.0 (Cat# [TT210002]).



Coomassie blue staining of purified ATP6V1H protein (Cat# [TP306841]). The protein was produced from HEK293T cells transfected with ATP6V1H cDNA clone (Cat# RC206841) using MegaTran 2.0 (Cat# [TT210002]).