

Product datasheet for **RC206828**

DENTT (TSPYL2) (NM_022117) Human Tagged ORF Clone

Product data:

Product Type:	Expression Plasmids
Product Name:	DENTT (TSPYL2) (NM_022117) Human Tagged ORF Clone
Tag:	Myc-DDK
Symbol:	DENTT
Synonyms:	CDA1; CINAP; CTCL; DENTT; HRIHFB2216; NP79; SE204; TSPX
Mammalian Cell Selection:	Neomycin
Vector:	pCMV6-Entry (PS100001)
E. coli Selection:	Kanamycin (25 ug/mL)



[View online »](#)

ORF Nucleotide Sequence:

>RC206828 ORF sequence
 Red=Cloning site Blue=ORF Green=Tags(s)

TTTTGTAATACGACTCACTATAGGGCGGCCGGGAATTCGTCGACTGGATCCGGTACCGAGGAGATCTGCC
 GCC**CGGATCGCC**

ATGGACCGCCAGATGAGGGCCTCCGGCCAAGACCCCGCCGCTGAGCAGCTCCGAGTCTCCACAGCGG
 ACCGCCCCCGCCGCGCCGCGCCGCTCCTCCGACTGCCGCTGCCCTCCACCCAGCAGCGCCGAG
 GCTCCAGGAGAAACGGAGGCGGCACAGGTGCTGGCCGATATGAGGGGGTGGGACTGGGCCCGCGCTG
 CCCCCCGCCTCCCTATGTCATTCTCGAGGAGGGGGATCCGCGCATACTTCACGCTCGGTGCTGAGT
 GTCCCGGTGGGATTCTACCATCGAGTCGGGTATGGGGAGGCGCCCGCCACGGAGAGCCTGGAAGC
 ACTCCCCACTCTGAGGCCTCGGGGGGAGCCTGGAAATCGATTTTCAGGTTGTACAGTCGAGCAGTTTT
 GGTGGAGAGGGGCCCTAGAACTGTAGCGCAGTGGGTGGGCGCCAGAGGTTAGTTGACCCGAAGA
 GCAAGGAAGAGGCGATCATCATAGTGGAGGATGAGGATGAGGATGAGCGGAGAGTATGAGGAGCAGCAG
 GAGGCGGCGCGCGCGGAGGAGGAAGCAGAGGAAGTGAAGAGGAAAGCAGAGAGAGAAATGCCGAG
 AGGATGGAGAGCATCCTGCAGGCACTGGAGGATATTCAGCTGGATCTGGAGGCAGTGAACATCAAGGCGAG
 GCAAAGCCTTCTGCGTCTCAAGCGCAAGTTCATCCAGATGCGAAGACCTTCTGGAGCGCAGAGACCT
 CATCATCCAGCATATCCAGGCTTCTGGGTCAAAGCATTCTCAACCACCCAGAAATTTCAATTTTGATC
 AACCGACGTGATGAAGACATTTTCCGCTACTTGACCAATCTGCAGGTACAGGATCTCAGACATATCTCCA
 TGGGCTACAAAATGAAGCTGACTTCCAGACTAACCCCTACTTCACAAACATGGTGATTGTCAAGGAGTT
 CCAGCGCAACCGCTCAGGCCGGTGGTGTCTCACTCAACCCCAATCCGCTGGCACCGGGCCAGGAACCC
 CAGGCCCGTGTACGGGAACAGGATGCGAGCCACAGCTTTTTCAGCTGGTTCTCAAACCATAGCCTCC
 CAGAGGCTGACAGGATTGCTGAGATTATCAAGAATGATCTGTGGGTTAACCTCTACGCTACTACCTGAG
 AGAAAGGGCTCCAGGATAAAGAGAAAGCAAGAAATGAAGAAACGTAAAACCCAGGGGAGATGTGAG
 GTGGTATCATGGAAGACGCCCTGACTATTATGCAAGTGAAGACATTTTCAGCGAGATCTCAGACATTG
 ATGAGACAATTCATGACATCAAGATCTCTGACTTCATGGAGACCACCGACTACTTCGAGACCACTGACAA
 TGAGATAACTGACATCAATGAGAATCTGCGACAGCGAGAATCTGACCACAATGAGGTCCCAACAAC
 GAGACCACTGATAACAACGAGAGTGCTGATGACCACGAAACCACTGACAACAATGAGAGTGCAGATGACA
 ACAACGAGAACTCTGAAGACAATAACAAGAACACTGATGACAACGAAGAGAACCCTAACACAACGAGAA
 CACTTACGGCAACAATCTTCAAAGGTGGCTTCTGGGGCAGCCATGGCAACAACAGGACAGCAGCGAC
 AGTGACAATGAAGCAGATGAGGCCAGTGTGATGAAGATAATGATGGCAACGAAGGTGACAATGAGGGCA
 GTGATGATGATGGCAATGAAGGTGACAATGAAGGCAGCGATGATGACGACAGAGACATTGAGTACTATGA
 GAAAGTTATTGAAGACTTTGACAAGGATCAGGCTGACTACGAGGACGTGATAGAGATCATCTCAGACGAA
 TCAGTGGAAAGAGGGCATTGAGGAAGGCATCCAGCAAGATGAGGACATCTATGAGGAAGGAACTATG
 AGGAGGAAGGAAGTGAAGATGTCTGGGAAGAAGGGGAAGATTCGGACGACTCTGACCTAGAGGATGTGCT
 TCAGGTCCCAACCGTTGGGCCAATCCGGGAAGAGGGGAAAACCGGA

ACGCGTACGCGGGCGCTCGAGCAGAACTCATCTCAGAAGAGGATCTGGCAGCAATGATATCTGGATT
 ACAAGGATGACGACGATAAGGTTTAA

Protein Sequence: >RC206828 protein sequence
 Red=Cloning site Green=Tags(s)

MDRPDEGPPAKTRRLSSSESPQRDPPPPPPPPPLLRLLPLPPPQQRPLQEETEAQVLADMRGVGLGPAL
 PPPPPYVILEEGGIRAYFTLGAECPGWDSTIESGYGEAPPPTESLEALPTPEASGGSLIDFQVVQSSSF
 GGEGALETCSAVGWAPQRLVDPKSKEEAIIVEDEDEDERESMRSRRRRRRRRRQRKVKRESRERNAE
 RMESILQALEDIQLDLEAVNIKAGKAFRLRKRKFIQMRRPFLERRDLIIQHIPGFVWKAFLNHPRISILI
 NRRDEIDIFRYLTNLQVQDLRHISMGYKMKLYFQTNPYFTNMVIVKEFQRNRSGRVLVSHSTPIRWHRGQEP
 QARRHGNQDASHFFSWFSNHSLPEADRIAEIIKNDLWVNPLRYLREGRSRIKRRKQEMKKRKRTRGRCE
 VVIMEDAPDYAYVEDIFSEISDIDETIHDIKISDFMETTDYFETDNEITDINENICDSENPDHNEVPNN
 ETTDNNEASDDHETTDNNEASDDNENPEDNNKNTDDNEENPNNNENTYGNFFKGGFWGSHGNNQDSSD
 SDNEADEASDDEDNDGNEGDNEGSDDDGNEGDNEGSDDDDRDIEYKVIKEDFDKQADYEDVIEIISDE
 SVEEEGIEEGIQQDEDIYEEGNYEEEGSEDEVWEEGEDSDSDLEDVLPVNGWANPGKRGKTG

TRTRPLEQKLISEEDLAANDILDYKDDDDKV

Chromatograms: https://cdn.origene.com/chromatograms/mk6744_f10.zip

Restriction Sites: SgfI-MluI

Cloning Scheme:



ACCN: NM_022117

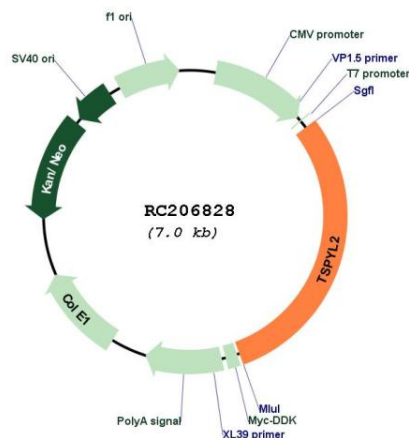
ORF Size: 2079 bp

OTI Disclaimer: The molecular sequence of this clone aligns with the gene accession number as a point of reference only. However, individual transcript sequences of the same gene can differ through naturally occurring variations (e.g. polymorphisms), each with its own valid existence. This clone is substantially in agreement with the reference, but a complete review of all prevailing variants is recommended prior to use. [More info](#)

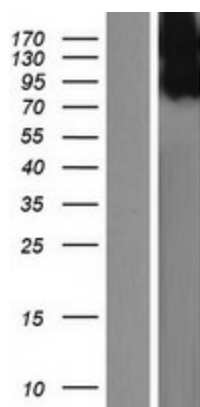
OTI Annotation: This clone was engineered to express the complete ORF with an expression tag. Expression varies depending on the nature of the gene.

Components:	The ORF clone is ion-exchange column purified and shipped in a 2D barcoded Matrix tube containing 10ug of transfection-ready, dried plasmid DNA (reconstitute with 100 ul of water).
Reconstitution Method:	<ol style="list-style-type: none">1. Centrifuge at 5,000xg for 5min.2. Carefully open the tube and add 100ul of sterile water to dissolve the DNA.3. Close the tube and incubate for 10 minutes at room temperature.4. Briefly vortex the tube and then do a quick spin (less than 5000xg) to concentrate the liquid at the bottom.5. Store the suspended plasmid at -20°C. The DNA is stable for at least one year from date of shipping when stored at -20°C.
RefSeq:	NM_022117.4
RefSeq Size:	2833 bp
RefSeq ORF:	2082 bp
Locus ID:	64061
UniProt ID:	Q9H2G4
Cytogenetics:	Xp11.22
Domains:	NAP
Protein Families:	Druggable Genome
MW:	79.4 kDa
Gene Summary:	This gene encodes a member of the testis-specific protein Y-encoded, TSPY-like/SET/nucleosome assembly protein-1 superfamily. The encoded protein is localized to the nucleolus where it functions in chromatin remodeling and as an inhibitor of cell-cycle progression. This protein may play a role in the suppression of tumor growth. [provided by RefSeq, Sep 2009]

Product images:



Circular map for RC206828



Western blot validation of overexpression lysate (Cat# [LY411789]) using anti-DDK antibody (Cat# [TA50011-100]). Left: Cell lysates from untransfected HEK293T cells; Right: Cell lysates from HEK293T cells transfected with RC206828 using transfection reagent MegaTran 2.0 (Cat# [TT210002]).