

Product datasheet for **RC206824**

METTL8 (NM_024770) Human Tagged ORF Clone

Product data:

Product Type:	Expression Plasmids
Product Name:	METTL8 (NM_024770) Human Tagged ORF Clone
Tag:	Myc-DDK
Symbol:	METTL8
Synonyms:	TIP
Mammalian Cell Selection:	Neomycin
Vector:	pCMV6-Entry (PS100001)
E. coli Selection:	Kanamycin (25 ug/mL)
ORF Nucleotide Sequence:	>RC206824 representing NM_024770 Red=Cloning site Blue=ORF Green=Tags(s)

TTTTGTAATACGACTCACTATAGGGCGGCCGGAATTCGTCGACTGGATCCGGTACCGAGGAGATCTGCC
GCC**CGATCGC**C

ATGAATATGATTGGAGAAATCCATTTCTTGTCTAAGGCTAGGAAAGTGCCACACAGATACCAAAGTG
GTTACCACCCAGTGGCCCTCTGGGATCAAGGATTTAACTGACCCAGCCAAAGTTTTTGAACACAACAT
GTGGGATCACATGCAGTGGTCTAAGGAAGAAGAAGCAGCAGCCAGAAAAAGTAAAAGAAAACTCAGCT
GTGCGAGTCTTCTGGAAGAGCAAGTTAAGTATGAGAGAGAAGCTAGTAAATACTGGACACATTTTACA
AGATTCATAAGAATAAGTTTTTCAAGGATCGTAATTGGCTGTTGAGGGAATTTCTGAAATCTTCCAGT
TGATCAAAAACCTGAAGAGAAGGCGAGAGAATCATCATGGGATCATGTA AAAACTAGTGCTACAAATCGT
TTCTCAAGAATGCACTGTCTACTGTGCCTGATGAAAAAATCATTATGAGAAAAGTTCTGGTTCTTCAG
AAGGTCAAAGCAAACAGAACTGATTTTTCCAACCTAGACTCTGAAAAACAAAAAGGACCTATGGA
GACTGGATTGTTTCTGGTAGCAATGCCACTTTCAGGATACTAGAGGTTGGTTGTGGAGCTGGAAATAGT
GTGTTTCCAATTTTGAACACTTTGGAGAACTCTCCGGAGTCTTCTGTATTGTTGTGATTTTGCTTCTG
GAGCTGTGGAGCTCGTAAAGTCACTCGTCTACAGAGCAACCCAGTGTTCCTTTGTTTCATGATGT
ATGTGATGATGGCTTACCTTACCCTTTCCAGATGGGATCCTGGATGTCATTCTCCTTGTCTTTGTGCTC
TCTTCTATTCATCCTGACAGGATGCAAGGTGTTGTAACCGACTGTCCAAGTTACTGAAACCTGGGGAA
TGCTGTTATTTTCGAGACTATGGAAGATATGATAAGACTCAGCTTCGTTTTAAAAAGGGACATTGTTTATC
TGAAAAATTTTATGTTCCGAGGAGATGGTACCAGAGCATATTTCTTTACAAAAGGGGAAGTCCACAGTATG
TTCTGCAAAGCCAGTTTAGATGAAAAGCAAATCTGGTTGATCGCCGCTTACAAGTTAATAGGAAAAAC
AAGTGA AATGCACCGAGTGTGGATTCAAGGCAAATCCAGAAACCATTGCACCAGACTCAGAATAGCTC
CAATATGGTATCTACACTCCTTTACAAGAC

ACGCGTACGCGGCCGCTCGAGCAGAACTCATCTCAGAAGAGGATCTGGCAGCAAATGATATCTGGATT
ACAAGGATGACGACGATAAGGTTTAA



[View online »](#)

Protein Sequence: >RC206824 representing NM_024770
Red=Cloning site Green=Tags(s)

MNMIWRNSISCLRLGKVPHPYQSGYHPVAPLGSRILTDPAKVFEHNMWDHMQWSKEEEAAARKKVKENSA
 VRVLLLEEQVKYEREASKYWDTFYKIHKNKFFKDRNWLLREFPEILPVDQKPEEKARESSWDHVKTSATNR
 FSRMHCPTVPDEKNHYEKSSGSSEGGQSKTESDFSNLDSEKHKKGPMETGLFPGSNATFRILEVCGGAGNS
 VFPILNTLENSPESFLYCCDFASGAVELVKSHSSYRATQCFAFVHDVDCDDGLPYFPFDGILDVILLVFL
 SSIHPRMQGVNRLSKLLKPGGMLLFRDYGRYDKTQLRFKKGHCLSENFYVRGDTRAYFFTKGEVHSM
 FCKASLDEKQNLVDRRLQVNRKKQVKMHRVWIQGFQKPLHQTQNSSNMVSTLLSQD

TRTRPLEQKLISEEDLAANDILDYKDDDDKV

Chromatograms: https://cdn.origene.com/chromatograms/mk8025_e12.zip

Restriction Sites: SgfI-MluI

Cloning Scheme:



* The last codon before the Stop codon of the ORF

ACCN: NM_024770

ORF Size: 1221 bp

OTI Disclaimer: The molecular sequence of this clone aligns with the gene accession number as a point of reference only. However, individual transcript sequences of the same gene can differ through naturally occurring variations (e.g. polymorphisms), each with its own valid existence. This clone is substantially in agreement with the reference, but a complete review of all prevailing variants is recommended prior to use. [More info](#)

OTI Annotation: This clone was engineered to express the complete ORF with an expression tag. Expression varies depending on the nature of the gene.

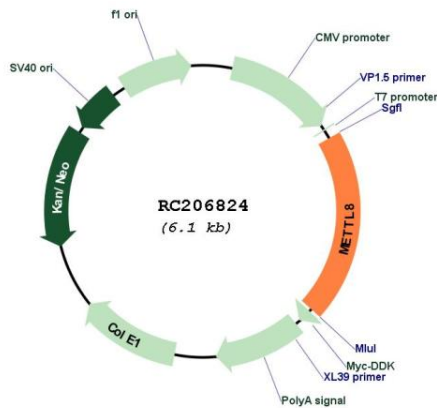
Components: The ORF clone is ion-exchange column purified and shipped in a 2D barcoded Matrix tube containing 10ug of transfection-ready, dried plasmid DNA (reconstitute with 100 ul of water).

Reconstitution Method:

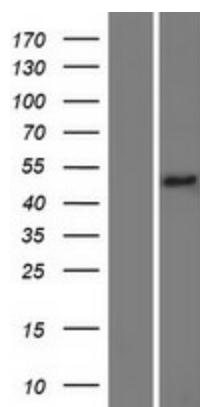
1. Centrifuge at 5,000xg for 5min.
2. Carefully open the tube and add 100ul of sterile water to dissolve the DNA.
3. Close the tube and incubate for 10 minutes at room temperature.
4. Briefly vortex the tube and then do a quick spin (less than 5000xg) to concentrate the liquid at the bottom.
5. Store the suspended plasmid at -20°C. The DNA is stable for at least one year from date of shipping when stored at -20°C.

RefSeq: [NM_024770.4](#)
RefSeq Size: 8154 bp
RefSeq ORF: 1224 bp
Locus ID: 79828
Cytogenetics: 2q31.1
Protein Families: Druggable Genome
MW: 46.8 kDa
Gene Summary: Probable methyltransferase.[UniProtKB/Swiss-Prot Function]

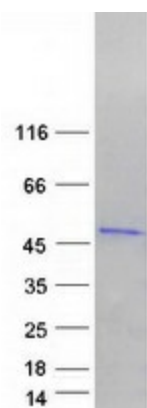
Product images:



Circular map for RC206824



Western blot validation of overexpression lysate (Cat# [LY411082]) using anti-DDK antibody (Cat# [TA50011-100]). Left: Cell lysates from untransfected HEK293T cells; Right: Cell lysates from HEK293T cells transfected with RC206824 using transfection reagent MegaTran 2.0 (Cat# [TT210002]).



Coomassie blue staining of purified METTL8 protein (Cat# [TP306824]). The protein was produced from HEK293T cells transfected with METTL8 cDNA clone (Cat# RC206824) using MegaTran 2.0 (Cat# [TT210002]).