

## Product datasheet for **RC206823**

### ZBTB3 (NM\_024784) Human Tagged ORF Clone

#### Product data:

Product Type:	Expression Plasmids
Product Name:	ZBTB3 (NM_024784) Human Tagged ORF Clone
Tag:	Myc-DDK
Symbol:	ZBTB3
Synonyms:	FLJ23392
Mammalian Cell Selection:	Neomycin
Vector:	pCMV6-Entry (PS100001)
E. coli Selection:	Kanamycin (25 ug/mL)



[View online »](#)

**ORF Nucleotide Sequence:**

>RC206823 ORF sequence  
 Red=Cloning site Blue=ORF Green=Tags(s)

TTTTGTAATACGACTCACTATAGGGCGGCCGGAATTCGTCGACTGGATCCGGTACCGAGGAGATCTGCC  
 GCC**CGCATCGCC**

ATGCTTAGGGAGTTCTCGAAGTGGGGCGTAGAGGCATCGCCTGGCAAGGCCTGGGAGCGAAAAAGATCTC  
 TACTTCGTGGAGCCGTTGGACGCTACCGGGAGCCACTGGTGGGACCTTTTTGGGCCCTTTCCCTTC  
 GTGGGGTACTATGGAGTCCCAGAACACAGTCAGCAGCTGCTGCAGAGCCTCCGGGAGCAGCGGTCCAG  
 GGTTCCTTTGTGACTGCACCGTATGGTGGTGTAGTACCCAGTCTTGCCCATCGGGCTGTGCTGGCCT  
 CCTGCAGCCATTCTCCAGTTTTCTACAAGGAGCGGGAATTGGACAAGAGGGATCTGGTGTGATTCA  
 CAATGAAATTGTACAGCCCCAGCCTTTGGGCTGCTTCTGGACTTTATGTATGCTGGCCAGCTGACCCTG  
 AGAGGGGATACCCCTGTGGAGGATGTGCTGGCAGCTGCCAGCTACTTGCACATGAATGACATCGTCAAGG  
 TGTGTAAGCGGGCTTCAAGCCCGGGCCCTGGCAGAGGCAGACAGTACCAAGAAGGAGGAGAAACCAA  
 CTCACAGCTTCTAGTTGGAGTTTTGTCTAGTACTTCCCGTGGCACCCAACTTCGTTGGCATCTGCT  
 GAGACATCAGGCCACTGGGGCAAAGGGGAATGGAAGGCTCTGCTGCTCCCTCACCTACTGTCCGTCCTC  
 CAGATGAGCCACCAATGTCTAGTGGGGTGACACTACACAGCCTGGCATGGAGGTTGACGCACCACATCT  
 GCGGGCACCTCATCCACAGTGGCTGATGTCTCTTGGCAGCCCTAGTAGCTCCACTGAGACCATTCT  
 ACAAACTACTTCTTCTGGCATCTCAGCAGTTTCATTGGAGCCACTGCCATCTCTTGTGTGGTCCCTG  
 AGAGTCTGAGGGTGGTGGAAACCAAGGATCCTGGAGGACCCTGCAAGGCTTCTATCCCCAGCCTCAGC  
 CCCAACGTCAGCCCCAGCCCTGTCTCAGCTCCAGTCCATCCCAGGCTCCAGCCCCAGCTGAAGCTGAG  
 CTGGTCCAGGTGAAAGTTGAAGCTATTGTGATCTCTGATGAAGAGACTGATGTGCAGTGAACAGCCTC  
 AGGGCTCTGAGAGAGCTTCCCATCTGGAGGAGCAGTGTATGGGGCACAGCCCTCCAGCCAGAGCTTT  
 TGAAGACCCAGGGCAGCAGGACTGGAGGAGTGGGGCCAAGTGACCACTTCTGCCAACAGACCCTCAT  
 CTACCCTACCATCTGCTGCCAGGTGCAGGGCAGTATCATCGAGGACTGGTACCTCACCTCTGCCTGCAC  
 CCGCATCCCTGCATGAGCCACTTTACCTGTCTTCTGAGTACGAAGCAGCTCCAGGAAGCTTTGGGTTTT  
 TACTGAGGATGTTCCACCTGCAAGACATGTGGGAAGACCTTCTCATGCTTTACACACTACGGCGACAT  
 GCCACGGTGCACACAGTGCAGCACCCTATGAGTGCCGCTACTGCCTGCGGAGCTACACGCAGTCAGGGG  
 ACCTCTACCGCCACATCCGAAGGCTCACAATGAGGACCTGGCCAAACGCAGCAAACCAGATCCAGAAGT  
 GGGACCCCTTCTAGGGTGCAGCCTCTCCCTGGCTCCCCAACAGCAGACAGACAGAGCAGCAGTGGTGA  
 GGCCACCTAAAGATTTGTATTGGCCCCAAAACTAACATC

**ACGCGT**ACGCGGGCCGCTCGAGCAGAAACTCATCTCAGAAGAGGATCTGGCAGCAAATGATATCCTGGATT  
 ACAAGGATGACGACGATAAGGTTTAA

**Protein Sequence:**

>RC206823 protein sequence  
 Red=Cloning site Green=Tags(s)

MLREFSKWGEASPGKAWERKRSLLRGAVGRYRGATGGDLFWAPFPSWGTMEFPEHSQQLLQSLREQRSQ  
 GFLCDCTVMVGSTQFLAHRVLAASCSPFFQLFYKERELDKRDLVCIHNEIVTAPAFGLLLDFMYAGQLTL  
 RGDTPVEDVLAASYLHMNDIVKVKRRRLQARALAEADSTKKEEETNSQLPSLEFLSSTSRGTQPSLASA  
 ETSGHWGKGEWKSAAPSPTVRPPDEPPMSSGADTTQPGMEVDAPHLRAPHPPVADVSLASPSSTETIP  
 TNYFSSGISAVSLEPLPSLDVGPESLRVVEPKDPGGPLQGFYPPASAPTSAPAPVSAPVPSQAPAPAEAE  
 LVQVKVEAIVISDEETDVSDEQPQGERAFPSGGAVYGAQPSQPEAFEDPGAAGLEEVGSDHFLPTDPH  
 LPYHLLPGAGQYHRGLVTSPLPAPASLHEPLYLSSEYEAAPGSFGVFTEDVPTCKTCGKTFSCSYLRRH  
 ATVHTRERPYPECRYCLRSYTSQGDLYRHIRKAHNEDLAKRSKPDPEVGPLLVQPLPGSPTADRQSSSGG  
 GPPKDFVLAPKTNI

**TR**TRPLEQKLISEEDLAANDILDYKDDDDKV

**Chromatograms:**

[https://cdn.origene.com/chromatograms/mk6067\\_e01.zip](https://cdn.origene.com/chromatograms/mk6067_e01.zip)

**Restriction Sites:**

Sgfl-Mlul

**Cloning Scheme:**


**ACCN:** NM\_024784

**ORF Size:** 1722 bp

**OTI Disclaimer:** The molecular sequence of this clone aligns with the gene accession number as a point of reference only. However, individual transcript sequences of the same gene can differ through naturally occurring variations (e.g. polymorphisms), each with its own valid existence. This clone is substantially in agreement with the reference, but a complete review of all prevailing variants is recommended prior to use. [More info](#)

**OTI Annotation:** This clone was engineered to express the complete ORF with an expression tag. Expression varies depending on the nature of the gene.

**Components:** The ORF clone is ion-exchange column purified and shipped in a 2D barcoded Matrix tube containing 10ug of transfection-ready, dried plasmid DNA (reconstitute with 100 ul of water).

- Reconstitution Method:**
1. Centrifuge at 5,000xg for 5min.
  2. Carefully open the tube and add 100ul of sterile water to dissolve the DNA.
  3. Close the tube and incubate for 10 minutes at room temperature.
  4. Briefly vortex the tube and then do a quick spin (less than 5000xg) to concentrate the liquid at the bottom.
  5. Store the suspended plasmid at -20°C. The DNA is stable for at least one year from date of shipping when stored at -20°C.

**RefSeq:** [NM\\_024784.4](#)

**RefSeq Size:** 2990 bp

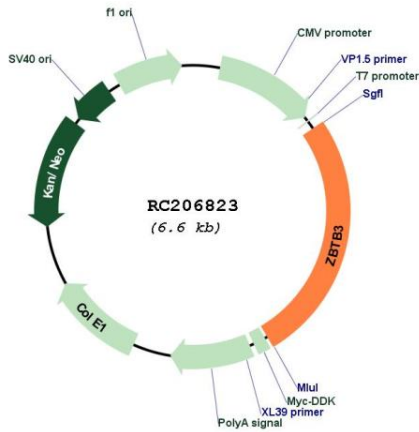
**RefSeq ORF:** 1725 bp

**Locus ID:** 79842

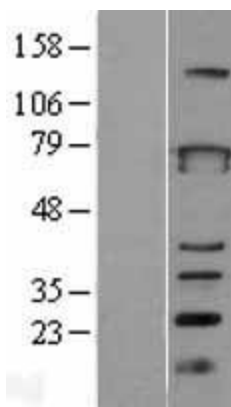
**UniProt ID:** [Q9H5J0](#)

**Cytogenetics:** 11q12.3

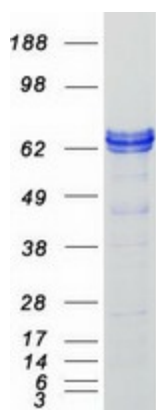
**Domains:** BTB, zf-C2H2  
**Protein Families:** Transcription Factors  
**MW:** 61.8 kDa  
**Gene Summary:** May be involved in transcriptional regulation.[UniProtKB/Swiss-Prot Function]

**Product images:**


Circular map for RC206823



Western blot validation of overexpression lysate (Cat# [LY403029]) using anti-DDK antibody (Cat# [TA50011-100]). Left: Cell lysates from untransfected HEK293T cells; Right: Cell lysates from HEK293T cells transfected with RC206823 using transfection reagent MegaTran 2.0 (Cat# [TT210002]).



Coomassie blue staining of purified ZBTB3 protein (Cat# [TP306823]). The protein was produced from HEK293T cells transfected with ZBTB3 cDNA clone (Cat# RC206823) using MegaTran 2.0 (Cat# [TT210002]).