

## Product datasheet for **RC206818**

### CCDC8 (NM\_032040) Human Tagged ORF Clone

#### Product data:

Product Type:	Expression Plasmids
Product Name:	CCDC8 (NM_032040) Human Tagged ORF Clone
Tag:	Myc-DDK
Symbol:	CCDC8
Synonyms:	3M3; p90; PPP1R20
Mammalian Cell Selection:	Neomycin
Vector:	pCMV6-Entry (PS100001)
E. coli Selection:	Kanamycin (25 ug/mL)



[View online »](#)

**ORF Nucleotide Sequence:**

>RC206818 ORF sequence  
 Red=Cloning site Blue=ORF Green=Tags(s)

TTTTGTAATACGACTCACTATAGGGCGGCCGGAATTCGTCGACTGGATCCGGTACCGAGGAGATCTGCC  
 GCC**CGCATCGCC**

ATGCTGCAGATCGGGGAGGACGTCGACTATTTGCTCATCCCCGGGAGGTCAGGCTGGCTGGGGCGTCT  
 GGAGAGTCATCTCTAAGCCCGCCACCAAGGAAGCAGAATTTTCGGGAGCGGCTGACCCAGTTCCTGGAAGA  
 AGAGGGCCGCACCCTGGAGGACGTGGCCCGCATCATGGAGAAGAGCACCCCGCACCCGCCAGCCCCC  
 AAAAAGCCCAAGGAGCCCGAGTGAGGAGGAGAGTGCAGCAGATGGTGACTCCTCCGCCCCGGCTGGTGC  
 TGGGCACGTACGACAGCAGCAACGCCAGCGACAGCGAGTTCAGCGACTTCGAGACCTCCAGAGACAAGAG  
 CCGCCAGGGCCCGCGCGGGCAAGAAGGTGCGCAAAATGCCCGTCAGCTACCTGGGCAGCAAGTTCCTG  
 GGAAGCGACTGGAGAGTGAGGATGATGAGGAAGTGGTCGAGGCCTTCTCCGGCGACAGGAGAAGCAGC  
 CCAGCGCGCCGCTGCCCGCCCGCTCAACCTGCCAGTGCCCATGTTTGAGGACAACCTGGGGCCTCA  
 GCTGTCCAAGCGGACAGGTGGCGGGAGTATGTCAGCCAGGTGTCTGGGGGAAGCTGAAGCGGAGGGTG  
 AAGGGTTGGGCGCCGAGGGCGGGCCCGGGGTGGGCGAGGCCCGCTGGCTCCACCGCAGTGGAGAGCG  
 CAGGGGTATCATCGGCGCCAGAGGGCACAGCCCGGGGATCGCTTGGGAAACCGGGGAGATGTTTGTGT  
 GCCCCAGGCTTCCCTAGGCGATGGAGGCCAAGATCAACTGGGCCTCCTTTCGGCGCCGAGGAAGGAG  
 CAGACAGCACCCACAGGTGAGGGGCGAGACATCGAGGCTGATCAGGGGGAGAGGCTGCAGATAGTCAAA  
 GGAAGAGGCCATAGCTGACCAGCGGGAAGGGGCTGCAGGTAATCAGAGGGCAGGGGCCCCAGCTGACCA  
 GGGGGCAGAGGCTGCAGATAATCAGAGGGAAGAGGCTGCAGATAATCAGAGGGCAGGGGCCCCAGCTGAG  
 GAGGGGGCAGAGGCTGCAGATAACCCAGAGGGAAGAGGCTGCAGATAATCAGAGGGCAGAGGCCCCAGCTG  
 ACCAGAGTCCACAGGGCACAGATAACCCAGGGGAAGAGGCTGCAGATAATCAGAGGGCAGAGGCCCCAGC  
 TGACCAGGGTACAGAGTTACAGATAATCAAAGGGAAGAGGCCGTACATGACCAGAGGGAAGGGCCCA  
 GCTGTCCAGGGTGCAGATAATCAGAGGGCACAGGCCCGGGTGGCCAGAGGGCAGAGGCTGCACATAATC  
 AGAGGGCAGGGGCCCAGGTATCCAGGAAGCTGAAGTCTCAGCTGCCAAGGGACCACAGGAACAGCTCC  
 AGGAGCCAGGGCCGGAACAGGTCAAGACAGTGAAGTTCAGACCCCTGGACGCTTTTCGTGGTTTTGC  
 AAGCGCCGAGAGCCTTCTGGCACACTCCCGGTTGCCAACCTGCCAAGAGAGTCCCCAGGGCAGGAG  
 AGGCCAGGAACCTCAGGGTGTGAGGGCCGAGGCCAGAGCAGAAGCTGAGCAGGGAGAGCAAGAAGACCA  
 GCTG

**ACGCGT**ACGCGGCCGCTCGAGCAGAAACTCATCTCAGAAGAGGATCTGGCAGCAAATGATATCCTGGATT  
 ACAAGGATGACGACGATAAGGTTTAA

**Protein Sequence:**

>RC206818 protein sequence  
 Red=Cloning site Green=Tags(s)

MLQIGEDVDYLLIPREVRLAGGVWRVVISKPATKEAEFRERLTQFLEEEGRITLEDVARIMEKSTPHPPQPP  
 KKPKEPRVRRRVQQMVTPPPRLVVGTYDSSNASDSEFSDFETSRDKSRQGP RRGKVKRMPVSYLGSKFL  
 GSDLESEDEELVEAFLRRQEKQPSAPPARRRVNLPVPMFEDNLGPQLSKADRWREYVSQVSWGKLRKV  
 KGWAPRAGPGVGEARLASTAVESAGVSSAPEGTS PGDRLGNAGDVCVPQASPRRWRPKINWASFRRRRKE  
 QTAPTGGADIEADQGEAADSQREEIADQREGAAGNQRAGAPADQGA EADNQREEADNQ RAGAPAE  
 EGAEAADNQREEADNQRAEAPADQRSQTDNHREEAADNQRAEAPADQGEVTDNQREEAVHDQRERAP  
 AVQGADNQRAQARAGQRAEAHNQRAGAPGIEAEVSAAQGTTGTAPGARARKQVKTVRFQTPGRFSWFC  
 KRRRAFWHTPRLPTLPKRVP RAGEARNLRVLRAEARAEAEQGEQEDQL

**TR**TRPLEQKLI SEEDLAANDILDYKDDDDKV

**Chromatograms:**

[https://cdn.origene.com/chromatograms/mk6564\\_f11.zip](https://cdn.origene.com/chromatograms/mk6564_f11.zip)

**Restriction Sites:**

Sgfl-MluI

**Cloning Scheme:**


**ACCN:** NM\_032040

**ORF Size:** 1614 bp

**OTI Disclaimer:** The molecular sequence of this clone aligns with the gene accession number as a point of reference only. However, individual transcript sequences of the same gene can differ through naturally occurring variations (e.g. polymorphisms), each with its own valid existence. This clone is substantially in agreement with the reference, but a complete review of all prevailing variants is recommended prior to use. [More info](#)

**OTI Annotation:** This clone was engineered to express the complete ORF with an expression tag. Expression varies depending on the nature of the gene.

**Components:** The ORF clone is ion-exchange column purified and shipped in a 2D barcoded Matrix tube containing 10ug of transfection-ready, dried plasmid DNA (reconstitute with 100 ul of water).

- Reconstitution Method:**
1. Centrifuge at 5,000xg for 5min.
  2. Carefully open the tube and add 100ul of sterile water to dissolve the DNA.
  3. Close the tube and incubate for 10 minutes at room temperature.
  4. Briefly vortex the tube and then do a quick spin (less than 5000xg) to concentrate the liquid at the bottom.
  5. Store the suspended plasmid at -20°C. The DNA is stable for at least one year from date of shipping when stored at -20°C.

**RefSeq:** [NM\\_032040.5](#)

**RefSeq Size:** 3334 bp

**RefSeq ORF:** 1617 bp

**Locus ID:** 83987

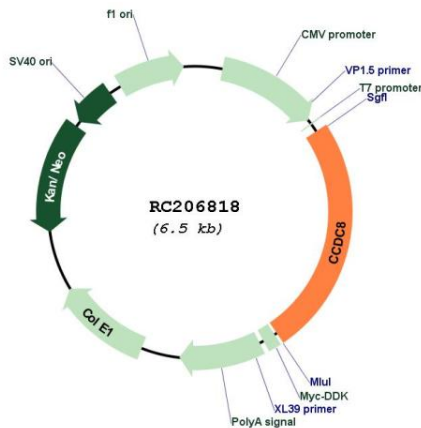
**UniProt ID:** [Q9H0W5](#)

**Cytogenetics:** 19q13.32

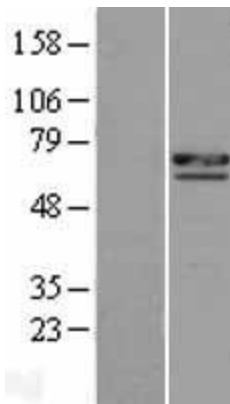
**MW:** 59.4 kDa

**Gene Summary:** This gene encodes a coiled-coil domain-containing protein. The encoded protein functions as a cofactor required for p53-mediated apoptosis following DNA damage, and may also play a role in growth through interactions with the cytoskeletal adaptor protein obscurin-like 1. Mutations in this gene are a cause of 3M syndrome-3 (3M3). [provided by RefSeq, Dec 2011]

**Product images:**



Circular map for RC206818



Western blot validation of overexpression lysate (Cat# [LY410349]) using anti-DDK antibody (Cat# [TA50011-100]). Left: Cell lysates from untransfected HEK293T cells; Right: Cell lysates from HEK293T cells transfected with RC206818 using transfection reagent MegaTran 2.0 (Cat# [TT210002]).