

Product datasheet for **RC206815**

MRFAP1 (NM_033296) Human Tagged ORF Clone

Product data:

Product Type: Expression Plasmids
Product Name: MRFAP1 (NM_033296) Human Tagged ORF Clone
Tag: Myc-DDK
Symbol: MRFAP1
Synonyms: PAM14; PGR1
Mammalian Cell Selection: Neomycin
Vector: pCMV6-Entry (PS100001)
E. coli Selection: Kanamycin (25 ug/mL)
ORF Nucleotide Sequence: >RC206815 ORF sequence
Red=Cloning site Blue=ORF Green=Tags(s)

TTTTGTAATACGACTCACTATAGGGCGGCCGGAATTCGTCGACTGGATCCGGTACCGAGGAGATCTGCC
GCC**CGGATCGCC**

ATGCGGCCCTGGACATCGTCGAGCTGGCGGAACCGGAGGAAGTGGAGGTGCTGGAGCCCGAGGAGGATT
TCGAGCAGTTTCTGCTCCCGGTCAACGAGATGCGCGAGGACATCGCGTCGCTGACGCGCAGCACGG
GCGGGCGTACCTGCGGAACCGGAGCAAGCTGTGGGAGATGGACAATATGCTCATCCAGATCAAAACGCAG
GTGGAGGCCTCGGAGGAGAGCGCCCTCAACCACCTCCAGAACCCGGGCGACGCGGCCGAGGGCCGGGCGG
CCAAGAGGTGCGAGAAGGCCGAGGAGAAGGCCAAGGAGATTGCGAAGATGGCAGAGATGCTGGTGGAGCT
GGTCCGGCGGATAGAGAAGAGCGAGTCGTCG

ACGCGTACGCGGCCGCTCGAGCAGAACTCATCTCAGAAGAGGATCTGGCAGCAAATGATATCCTGGATT
ACAAGGATGACGACGATAAGGTTTAA

Protein Sequence: >RC206815 protein sequence
Red=Cloning site Green=Tags(s)
MRPLDIVELAEPEEVEVLEPEEDFEQFLLPVINEMREDIASLTREHGRAYLRNRSKWLWEMDNMLIQIKTQ
VEASEESALNHLQNPGDAAEGRAAKRCEKAEEKAKEIAKMAEMLVELVRRRIEKSESS

TRTRPLEQKLISEEDLAANDILDYKDDDDKV

Chromatograms: https://cdn.origene.com/chromatograms/mk6426_e07.zip

Restriction Sites: SgfI-MluI



[View online »](#)

Cloning Scheme:


ACCN: NM_033296

ORF Size: 381 bp

OTI Disclaimer: The molecular sequence of this clone aligns with the gene accession number as a point of reference only. However, individual transcript sequences of the same gene can differ through naturally occurring variations (e.g. polymorphisms), each with its own valid existence. This clone is substantially in agreement with the reference, but a complete review of all prevailing variants is recommended prior to use. [More info](#)

OTI Annotation: This clone was engineered to express the complete ORF with an expression tag. Expression varies depending on the nature of the gene.

Components: The ORF clone is ion-exchange column purified and shipped in a 2D barcoded Matrix tube containing 10ug of transfection-ready, dried plasmid DNA (reconstitute with 100 ul of water).

- Reconstitution Method:**
1. Centrifuge at 5,000xg for 5min.
 2. Carefully open the tube and add 100ul of sterile water to dissolve the DNA.
 3. Close the tube and incubate for 10 minutes at room temperature.
 4. Briefly vortex the tube and then do a quick spin (less than 5000xg) to concentrate the liquid at the bottom.
 5. Store the suspended plasmid at -20°C. The DNA is stable for at least one year from date of shipping when stored at -20°C.

RefSeq: [NM_033296.2](#)

RefSeq Size: 2184 bp

RefSeq ORF: 384 bp

Locus ID: 93621

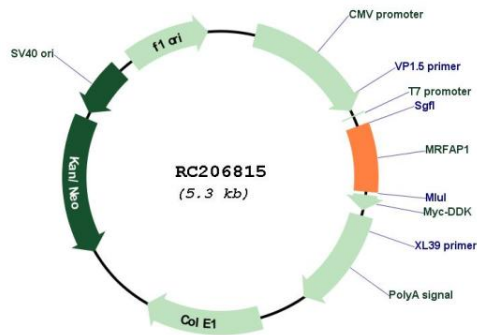
UniProt ID: [Q9Y605](#)

Cytogenetics: 4p16.1

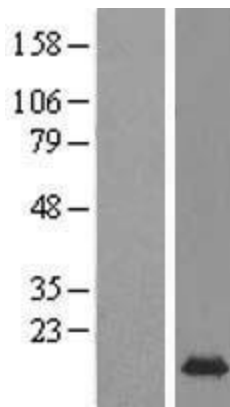
MW: 14.6 kDa

Gene Summary: This gene encodes an intracellular protein that interacts with members of the MORF4/MRG (mortality factor on chromosome 4/MORF4 related gene) family and the tumor suppressor Rb (retinoblastoma protein.) The protein may play a role in senescence, cell growth and immortalization. Alternative splicing results in multiple transcript variants. [provided by RefSeq, Jan 2013]

Product images:



Circular map for RC206815



Western blot validation of overexpression lysate (Cat# [LY409615]) using anti-DDK antibody (Cat# [TA50011-100]). Left: Cell lysates from untransfected HEK293T cells; Right: Cell lysates from HEK293T cells transfected with RC206815 using transfection reagent MegaTran 2.0 (Cat# [TT210002]).



Coomassie blue staining of purified MRFAP1 protein (Cat# [TP306815]). The protein was produced from HEK293T cells transfected with MRFAP1 cDNA clone (Cat# RC206815) using MegaTran 2.0 (Cat# [TT210002]).