

## Product datasheet for RC206811

### BNIPL (NM\_138278) Human Tagged ORF Clone

#### Product data:

Product Type:	Expression Plasmids
Product Name:	BNIPL (NM_138278) Human Tagged ORF Clone
Tag:	Myc-DDK
Symbol:	BNIPL
Synonyms:	BNIP-S; BNIP-Salpha; BNIP-Sbeta; BNIPL-1; BNIPL-2; BNIPL1; BNIPL2; BNIPS; PP753
Mammalian Cell Selection:	Neomycin
Vector:	pCMV6-Entry (PS100001)
E. coli Selection:	Kanamycin (25 ug/mL)
ORF Nucleotide Sequence:	>RC206811 ORF sequence Red=Cloning site Blue=ORF Green=Tags(s)

TTTTGTAATACGACTCACTATAGGGCGCCGGGAATTCGTCGACTGGATCCGGTACCGAGGAGATCTGCC  
GCC**CGATCGCC**

ATGGGAACATACAAGAGGCAGGAAAAAGACAGATGTTGGGGTCAGGGAGATTGCAGAAGCACCAGAAC  
TAGGAGCAGCCCTGAGACATGGGGAGTTGGAGCTGAAGGAGGAATGCGAGGATGAAGAATTCCTAGATT  
GCTTCTGAGGAGGCTGGCACTTCTGAAGATCCTGAAGACCCTAAAGGAGATTCACAGGCAGCTGCAGGT  
ACCCCCAGCACTTAGCCCTGTGTGGCCAGCGCCCATGCGCAAGCGTCTTTCTGCCCCAGAGTTGCGGC  
TGAGTCTGACTAAGGGGCTGGAATGATGGAGCTTCACCCACCCAGTCTGCACCTTCTCTCTGATGG  
CAGTTCTGACCTGGAGATAGACGAATTGGAGACACCTTCAGACTCGGAGCAGCTGGACAGTGGACATGAA  
TTTGAATGGGAAGATGAACTACCCCGGGCAGAGGGTCTGGGCACCAAGTGCAGACAGCTGAAAGGCTGGGCC  
GAGGTTGTATGTGGGATGTGACTGGAGAAGATGGACATCACTGGAGGGTGTCCGAATGGGACCACGGGA  
GCAGCGCGTAGACATGACTGTCATTGAGCCCTATAAGAAAGTCTGTCTCATGGAGGTTACCACGGTGAT  
GGCCTCAATGCTGTCATCCTTTTTGCTTCTGTATCTACCCAGAAGCAGCATCCCCAACACCTATG  
TCATGGAACACTGTTTTAGGTATATGGTGGAACTCTGGAGCTGCTAGTAGCTGAAAATTACCTGCTTGT  
TCATTTGAGTGGAGGCACAAGCAGGGCCCAAGTCCACCTTAAGCTGGATACGTAGTGTACCGTACC  
CTGGATCGGCGGCTACGGAAAACTGCGAGCCCTGGTGGTTGTCCATGCTACATGGTATGTGAAAGCAT  
TTCTGGCACTGCTTCGGCCCTTCATCAGTTCAAATTCACACGAAAAATCCGTTTTCTGGACAGCCTGGG  
GGAGCTGGCCCAACTCATATCCCTGGATCAAGTCCACATCCCTGAAGCTGTCAGACAGCTGGACCGGAT  
CTCCATGGCTCAGGAGGGACA

**ACGCGT**ACGCGGCCGCTCGAGCAGAAACTCATCTCAGAAGAGGATCTGGCAGCAAATGATATCCTGGATT  
ACAAGGATGACGACGATAAGGTTTAA



[View online »](#)

**Protein Sequence:** >RC206811 protein sequence  
Red=Cloning site Green=Tags(s)

MGTIQEAGKKTVDGVREIAEAPELGAALRHGELELKEEWQDEEFPRLLPEEAGTSEDPEDPKGDSQAAAG  
 TPSTLALCGQRP MRKRLSAPELRLSLTKGPGNDGASPTQSAPSSPDGSSDLEIDELETSDSEQLDSGHE  
 FEWEDEL PRAEGLGTSETAERLGRGCMWDVTGEDGHHWRVFRMGPREQRVDMTVIEPYKVL SHGGYHGD  
 GLNAVILFASCYLPRSSIPNYTYVMEHLFRYVMVGTLELLVAENYLLVHL SGGTSRAQVPPLSWIRQCYRT  
 LDRRLRKNLRALVVVHATWYVKAFLLLRPFISSKFTRKIRFLDSL GELAQQLISLDQVHIPEAVRQLDRD  
 LHGSGGT

TRTRPLEQKLISEEDLAANDILDYKDDDDKV

**Chromatograms:** [https://cdn.origene.com/chromatograms/mk6328\\_f11.zip](https://cdn.origene.com/chromatograms/mk6328_f11.zip)

**Restriction Sites:** SgfI-MluI

**Cloning Scheme:**



**ACCN:** NM\_138278

**ORF Size:** 1071 bp

**OTI Disclaimer:** The molecular sequence of this clone aligns with the gene accession number as a point of reference only. However, individual transcript sequences of the same gene can differ through naturally occurring variations (e.g. polymorphisms), each with its own valid existence. This clone is substantially in agreement with the reference, but a complete review of all prevailing variants is recommended prior to use. [More info](#)

**OTI Annotation:** This clone was engineered to express the complete ORF with an expression tag. Expression varies depending on the nature of the gene.

**Components:** The ORF clone is ion-exchange column purified and shipped in a 2D barcoded Matrix tube containing 10ug of transfection-ready, dried plasmid DNA (reconstitute with 100 ul of water).

**Reconstitution Method:**

1. Centrifuge at 5,000xg for 5min.
2. Carefully open the tube and add 100ul of sterile water to dissolve the DNA.
3. Close the tube and incubate for 10 minutes at room temperature.
4. Briefly vortex the tube and then do a quick spin (less than 5000xg) to concentrate the liquid at the bottom.
5. Store the suspended plasmid at -20°C. The DNA is stable for at least one year from date of shipping when stored at -20°C.

**Note:** Plasmids are not sterile. For experiments where strict sterility is required, filtration with 0.22um filter is required.

**RefSeq:** [NM\\_138278.4](#)

**RefSeq Size:** 2160 bp

**RefSeq ORF:** 1074 bp

**Locus ID:** 149428

**UniProt ID:** [Q7Z465](#)

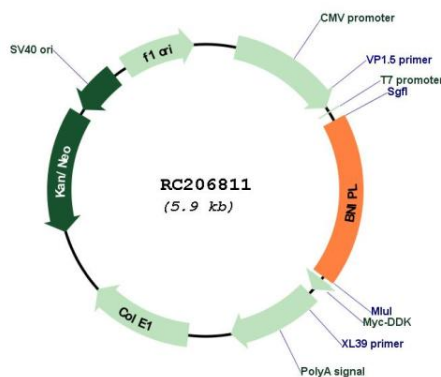
**Cytogenetics:** 1q21.3

**Domains:** SEC14

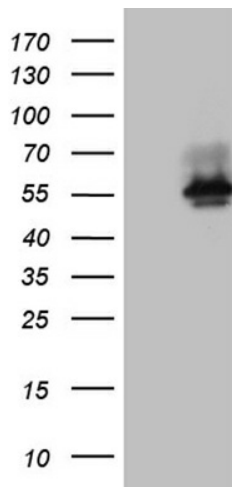
**MW:** 39.7 kDa

**Gene Summary:** The protein encoded by this gene interacts with several other proteins, such as BCL2, ARHGAP1, MIF and GFER. It may function as a bridge molecule between BCL2 and ARHGAP1/CDC42 in promoting cell death. Alternatively spliced transcript variants encoding different isoforms have been described for this gene. [provided by RefSeq, Aug 2011]

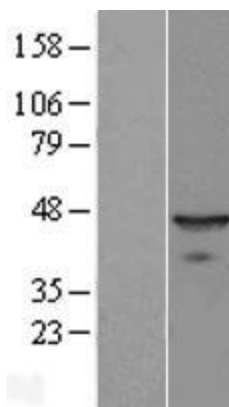
## Product images:



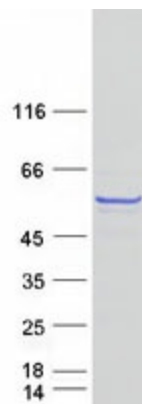
Circular map for RC206811



HEK293T cells were transfected with the pCMV6-ENTRY control (Cat# [PS100001], Left lane) or pCMV6-ENTRY BNIPL (Cat# RC206811, Right lane) cDNA for 48 hrs and lysed. Equivalent amounts of cell lysates (5 ug per lane) were separated by SDS-PAGE and immunoblotted with anti-BNIPL (Cat# [TA809281])(1:2000). Positive lysates [LY408738] (100ug) and [LC408738] (20ug) can be purchased separately from OriGene.



Western blot validation of overexpression lysate (Cat# [LY408738]) using anti-DDK antibody (Cat# [TA50011-100]). Left: Cell lysates from untransfected HEK293T cells; Right: Cell lysates from HEK293T cells transfected with RC206811 using transfection reagent MegaTran 2.0 (Cat# [TT210002]).



Coomassie blue staining of purified BNIPL protein (Cat# [TP306811]). The protein was produced from HEK293T cells transfected with BNIPL cDNA clone (Cat# RC206811) using MegaTran 2.0 (Cat# [TT210002]).