

## Product datasheet for **RC206810**

### FAM200A (NM\_145111) Human Tagged ORF Clone

#### Product data:

Product Type:	Expression Plasmids
Product Name:	FAM200A (NM_145111) Human Tagged ORF Clone
Tag:	Myc-DDK
Symbol:	FAM200A
Synonyms:	C7orf38
Mammalian Cell Selection:	Neomycin
Vector:	pCMV6-Entry (PS100001)
E. coli Selection:	Kanamycin (25 ug/mL)



[View online »](#)

**ORF Nucleotide Sequence:**

>RC206810 representing NM\_145111  
 Red=Cloning site Blue=ORF Green=Tags(s)

TTTTGTAATACGACTCACTATAGGGCGGCCGGAATTCGTCGACTGGATCCGGTACCGAGGAGATCTGCC  
 GCC**CGCATCGCC**

ATGACTCCTGAATCAAGGGATACTACAGATTTGTCTCCAGGGGTACCCAGGAGATGGAAGGCATCGTGA  
 TAGTGAAGGTGGAGGAGGAAGATGAAGAAGACCATTTTCAAAGGAAAGAAACAAAGTAGAGTCATCGCC  
 ACAAGTCTCAGTCGCTCTACAATGATGAATGAGAGAGCCTTATTGTCATCGTATTTAGTTGCATATAGA  
 GTGGCAAAGAGAAAATGGCTCACACAGCGGCTGAAAAATTATCCTTCCAGCATGTATGGACATGGTAC  
 GGACAATTTTGTGACAAATCAGCTGATAAACTAAGAATACTCTTGTGATAATAACAATATCTCG  
 TCGAATCTGTACGATTGCAAAACATTTGGAAGCAATGCTTATTACACGGCTGCAGTCCGGTATAGACTTT  
 GCAATCCAACCGATGAGAGCACTGATATTGCAAGTTGCCACACTCTTGGTTTATGTCAGATATGTGT  
 GGCAAGATGATTTGTAGAGGATCTCTTATGTTGTTAAATTTAAATTCACATATAACTGGATTAGATTT  
 ATTTACTGAATTAGAAAAGTGCCTTCTTGGTCAGTATAAATTAAGTGAAGCAATTTGTAAGGAATTTCA  
 AGTGATGGAACAGCAAATATGACCGGAAAACACAGCAGACTTACTGAAAATTTGTTAGAAGCAACCCACA  
 ACAATGCTGTTTGAATCACTGTTTTATTCATCGAGAAGCTTTGGTATCCAAAGAAATTTACCAAGTCT  
 GATGGATGATTGAAAAATGCAGTGAAGTGTAAATTTTATTAAGGAAGCTCACTGAATAGCCGACTT  
 CTCGAAATATTTTGTTCAGAGATTGGAGTGAACACACCCACTTATTGTTTCATACAGAAGTTCTGTTGGC  
 TTTCTCAAGGAAAAGTATTGAGCAGAGTATGAACTCAGGAACGAGATTTACATTTTTCTCGTTGAAAA  
 GCAATCTCATTGGCAAATATTTTGAAGACGACATTTGGGTAAACAAAATGGCATATTTAAGTGATATT  
 TTTGGCATTCTTAATGAATTAAGCCTGAAAATGCAGGGGAAAAACAATGATATTTTCAGTATCTGAAC  
 ATATTTAGGATTCAAAAGCCTTATTATTGTGGCAAGCAAGACTTAAAAGTAAACCCCTAGCTACTA  
 TATGTTTTCAACATTATTGCAACACATCGAAGAGAACATTATTAATGAAGACTGCTTAAAAGAAAATAAAA  
 TTAGAGATATTGTTGCATCTCACTTCTTGTCTCAAACCTTTAATTACTTTCCGGAAGAGAAATTTG  
 AATCATTAAGGAAAATATTTGGATGAAAGATCCATTTGCTTTTCAAACCCAGAATCAATAATTGAGTT  
 AAACCTGGAGCCTGAAGAAGAGAATGAATTATTGCAGCTCAGTTCATCATTACACTAAAGAATTATTAT  
 AAGATATTAAGTTTATCAGCATTGGATTAAGATTAAGATGACTTTCCACTGCTAAGTAGGAAGAGTA  
 TATTGCTGTTACTACCATTCAACTACATATTTGTGTGAAGTAGGATTTCAATCTTGACACGGTTAAA  
 AACAAAGAAGAGAAATAGGCTCAATAGTGCACCAGATATGCGGGTAGCATTATCTTCATGTGTTCCCTGAC  
 TGAAGGAACCTATGAACAGACAAGCACACCCATCACAT

**ACGCGT**ACGCGGCCGCTCGAGCAGAAACTCATCTCAGAAGAGGATCTGGCAGCAAATGATATCCTGGATT  
 ACAAGGATGACGACGATAAGGTTTAA

**Protein Sequence:**

>RC206810 representing NM\_145111  
 Red=Cloning site Green=Tags(s)

MPESRDITDLSPGGTQEMEGIVIVKVEEEDHDFQKERNKVESSPQVLSRSTTMNERALLSSYLVAIR  
 VAKEKMAHTAAEKIILPACMDMVRTIFDDKSADKLRTIPLSDNTISRRICTIAKHLEAMLITRLQSGIDF  
 AIQLDESTDIASCPTLLVYVRYVWQDDFVEDLLCCLNLSHITGLDLFTELENCLLQYKLNWKHKGKIS  
 SDGTANMTGKHSRLTEKLEATHNNAVWNHCFIHREALVSKEISPSLMDVLKNAVKTVNFVFKGSSLSNRL  
 LEIFCSEIGVNHHTLLFHTEVRWLSQKVL SRVYELRNEIYIFLVEKQSHLANIFEDDIWVTKLAYLSDI  
 FGILNELSLKMQGKNNDIFQYLEHILGFQKTLTLLWQARLKS NRPSYYMPTLLQHIENIINEDCLKI  
 LEILLHLTSLSQTFNYFFPEEKFESLKENIWMKDPFAFQNPESIIELNLEPEEENELLQLSSSFTLKNYY  
 KILSLSAFWIKIKDDFPLLSRKSILLLLPFTTTYLCELGFSILTRLKTKKRNLNSAPDMRVALSSCVPD  
 WKELMNRQAHPH

**TR**TRPLEQKLISEEDLAANDILDYKDDDDKV

**Chromatograms:**

[https://cdn.origene.com/chromatograms/mk8113\\_c08.zip](https://cdn.origene.com/chromatograms/mk8113_c08.zip)

**Restriction Sites:**

Sgfl-Mlul

**Cloning Scheme:**


**ACCN:** NM\_145111

**ORF Size:** 1719 bp

**OTI Disclaimer:** The molecular sequence of this clone aligns with the gene accession number as a point of reference only. However, individual transcript sequences of the same gene can differ through naturally occurring variations (e.g. polymorphisms), each with its own valid existence. This clone is substantially in agreement with the reference, but a complete review of all prevailing variants is recommended prior to use. [More info](#)

**OTI Annotation:** This clone was engineered to express the complete ORF with an expression tag. Expression varies depending on the nature of the gene.

**Components:** The ORF clone is ion-exchange column purified and shipped in a 2D barcoded Matrix tube containing 10ug of transfection-ready, dried plasmid DNA (reconstitute with 100 ul of water).

- Reconstitution Method:**
1. Centrifuge at 5,000xg for 5min.
  2. Carefully open the tube and add 100ul of sterile water to dissolve the DNA.
  3. Close the tube and incubate for 10 minutes at room temperature.
  4. Briefly vortex the tube and then do a quick spin (less than 5000xg) to concentrate the liquid at the bottom.
  5. Store the suspended plasmid at -20°C. The DNA is stable for at least one year from date of shipping when stored at -20°C.

**Note:** Plasmids are not sterile. For experiments where strict sterility is required, filtration with 0.22um filter is required.

**RefSeq:** [NM\\_145111.4](#)

**RefSeq Size:** 2548 bp

**RefSeq ORF:** 1722 bp

**Locus ID:** 221786

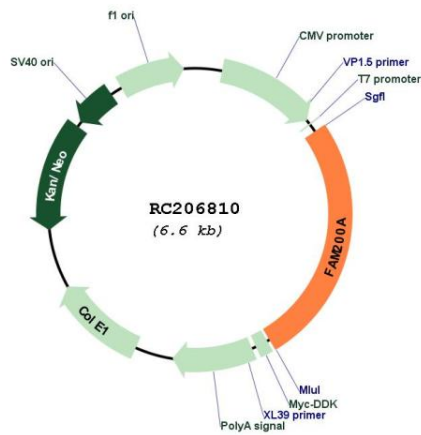
UniProt ID: [Q8TCP9](#)

Cytogenetics: 7q22.1

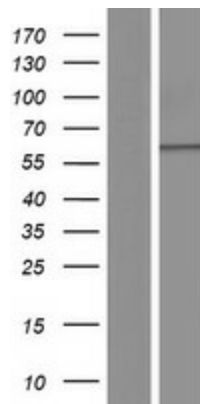
MW: 66.3 kDa

Gene Summary: This gene encodes a protein of unknown function. The protein is weakly similar to transposase-like proteins in human and mouse. [provided by RefSeq, Jul 2008]

**Product images:**



Circular map for RC206810



Western blot validation of overexpression lysate (Cat# [LY408017]) using anti-DDK antibody (Cat# [TA50011-100]). Left: Cell lysates from untransfected HEK293T cells; Right: Cell lysates from HEK293T cells transfected with RC206810 using transfection reagent MegaTran 2.0 (Cat# [TT210002]).