

## Product datasheet for **RC206806**

### MED19 (NM\_153450) Human Tagged ORF Clone

#### Product data:

**Product Type:** Expression Plasmids  
**Product Name:** MED19 (NM\_153450) Human Tagged ORF Clone  
**Tag:** Myc-DDK  
**Symbol:** MED19  
**Synonyms:** DT2P1G7; LCMR1; MED19AS  
**Mammalian Cell Selection:** Neomycin  
**Vector:** pCMV6-Entry (PS100001)  
**E. coli Selection:** Kanamycin (25 ug/mL)  
**ORF Nucleotide Sequence:** >RC206806 ORF sequence  
 Red=Cloning site Blue=ORF Green=Tags(s)

TTTTGTAATACGACTCACTATAGGGCGGCCGGAATTCGTCGACTGGATCCGGTACCGAGGAGATCTGCC  
 GCC**CGATCGCC**

ATGGAGAATTTACGGCACTGTTTGGGGCTCAGGCTGACCCACCACCGCCCCAACCGCACTCGGCTTCG  
 GACCAGGAAAGCCTCCACCCCGCCACCGCTCCTGCGGGCGGGGACCGGCACGGCCCCGCTCCCAC  
 CGCGGCCACGGCTCCTCTGGCGCGGACAAGTCAAGGAGCTGGCTGTGGCCCTTTTACCTCATGAGGAA  
 CTGCCAGGTAGCACAGAGCTGACAGGCAGCACGAATCTGATCACACACTACAACCTGGAACAAGCCTATA  
 ATAAATCTGTGGGAAGAAGGTGAAGGAGAAGCTAAGTAACCTCCTGCCTGACCTGCCAGGGATGATTGA  
 TCTGCCTGGTTCCCATGATAACAGCAGCCTCCGCTCTCTCATTGAGAAGCCCCCTATTCTCAGTAGCTCT  
 TTCAATCCTATCACAGGGACCATGCTGGCCGGCTTCCGCCTCCACACTGGCCCGTTGCCGGAGCAGTGTC  
 GTCTGATGCATATTCAGCCTCCAAGAAGAAGAATAAGCACAAGCACAAACAGAGCCGTACCCAGGATCC  
 TGTCACCCAGGTAACCCAGT

**ACGCGT**ACGCGGCCGCTCGAGCAGAACTCATCTCAGAAGAGGATCTGGCAGCAATGATATCCTGGATT  
 ACAAGGATGACGACGATAAGGTTTAA

**Protein Sequence:** >RC206806 protein sequence  
 Red=Cloning site Green=Tags(s)

MENFTALFGAQADPPPPPTALFGFGPKPPPPPPAGGGPGTAPPPTAATAPPGADKSGAGCGPFYLMRE  
 LPGSTELTGSTNLITHYNLEQAYNKFCGKKVKEKLSNFLPDLPGMIDLPGSHDNSSLRSLIEKPPILSSS  
 FNPITGTMLAGFRLHTGPLPEQCRMLMHIQPPKKKNKHKHKQSRQDPVPPGKPS

**TRTRPLEQKLI**SEEDLAANDILDYKDDDDKV





UniProt ID: [A0JLT2](#)

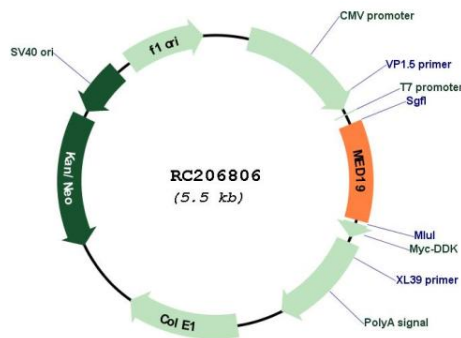
Cytogenetics: 11q12.1

Protein Families: Druggable Genome

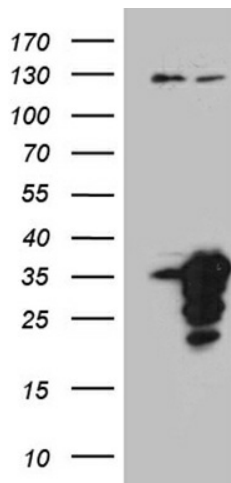
MW: 20.4 kDa

**Gene Summary:** The protein encoded by this gene is a subunit of the Mediator complex, which binds to gene-specific regulatory factors and provides support for the basal RNA polymerase II transcription machinery. This gene has been implicated in the growth of several types of cancer, and inhibition of its expression inhibits the growth and spread of these cancers. Two transcript variants encoding different isoforms have been found for this gene. [provided by RefSeq, Nov 2015]

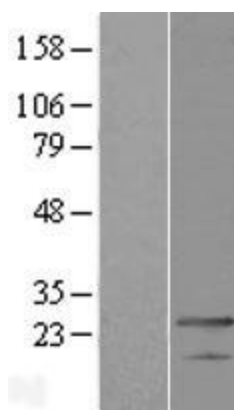
**Product images:**



Circular map for RC206806



HEK293T cells were transfected with the pCMV6-ENTRY control (Cat# [PS100001], Left lane) or pCMV6-ENTRY MED19 (Cat# RC206806, Right lane) cDNA for 48 hrs and lysed. Equivalent amounts of cell lysates (5 ug per lane) were separated by SDS-PAGE and immunoblotted with anti-MED19 (Cat# [TA810428])(1:2000). Positive lysates [LY407036] (100ug) and [LC407036] (20ug) can be purchased separately from OriGene.



Western blot validation of overexpression lysate (Cat# [LY407036]) using anti-DDK antibody (Cat# [TA50011-100]). Left: Cell lysates from untransfected HEK293T cells; Right: Cell lysates from HEK293T cells transfected with RC206806 using transfection reagent MegaTran 2.0 (Cat# [TT210002]).