

Product datasheet for **RC206802**

MLN64 (STARD3) (NM_006804) Human Tagged ORF Clone

Product data:

Product Type:	Expression Plasmids
Product Name:	MLN64 (STARD3) (NM_006804) Human Tagged ORF Clone
Tag:	Myc-DDK
Symbol:	MLN64
Synonyms:	CAB1; es64; MLN64
Mammalian Cell Selection:	Neomycin
Vector:	pCMV6-Entry (PS100001)
E. coli Selection:	Kanamycin (25 ug/mL)



[View online »](#)

ORF Nucleotide Sequence:

>RC206802 ORF sequence
 Red=Cloning site Blue=ORF Green=Tags(s)

TTTTGTAATACGACTCACTATAGGGCGGCCGGAATTCGTCGACTGGATCCGGTACCGAGGAGATCTGCC
 GCC**CGCATCGCC**

ATGAGCAAGCTGCCAGGGAGCTGACCCGAGACTTGGAGCGCAGCCTGCCTGCCGTGGCCTCCCTGGGCT
 CCTCACTGTCCCACAGCCAGAGCCTCTCCTCGCACCTCCTTCCGCGCCTGAGAAGCGAAGGCCATCTC
 TGATGTCCGCCGACCTTCTGTCTCTTCGTCTCACCTTCGACCTGCTCTTATCTCCCTGCTCTGGATCATC
 GAACTGAATACCAACACAGGCATCCGTAAGAAGCTTGGAGCAGGAGATCATCCAGTACAACCTTAAAACTT
 CCTTCTCGACATCTTTGTCTGGCCTTCTTCCGCTTCTCTGGACTGCTCCTAGGCTATGCCGTGCTGCG
 GCTCCGGCACTGGTGGGTGATTGCGGTACGACGCTGGTGTCCAGTGCATTCTCATTGTCAAGGTCATC
 CTCTCGAGCTGCTCAGCAAAGGGGCATTTGGCTACCTGCTCCCATCGTCTCTTTGTCTCGCCTGGT
 TGGAGACCTGGTTCCTTGACTTCAAAGTCTACCCAGGAAGCTGAAGAGGAGCGATGGTATCTTGGCCG
 CCAGGTTGCTGTTGCCCGTGGACCCCTGCTGTTCTCCGGTCTGTCCGAGGGACAGTTCTATTACCC
 CCAGAATCCTTTGCAGCGTCTGACAATGAATCAGATGAAGAAGTTGCTGGGAAGAAAAGTTTCTCTGCTC
 AGGAGCGGGAGTACATCCGCCAGGGGAAGGAGGCCACGGCAGTGGTGGACCAGATCTTGGCCAGGAAGA
 GAACTGGAAGTTTGAAGAATAATGAATATGGGGACACCGTGTACACCATTTGAAGTTCCCTTTACGGC
 AAGACGTTATCTGAAGACCTTCTGCCCTGTCTGCGGAGCTCGTGTACCAGGAGGTGATCCTGCAGC
 CCGAGAGGATGGTGTGTGGAACAAGACAGTACTGCCTGCCAGATCTGCAGCGAGTGGAAAGACAACAC
 CCTCATCTCTATGACGTGTCTGAGGGGCTGCGGGCGCGTGGTCTCCCAAGGGACTTCGTGAATGTC
 CGGCGCATTGAGCGGCGCAGGGACCGATACTTGTATCAGGGATCGCCACCTCACACAGTCCAAGCCCC
 CGACGCAAAATATGTCGGGGGAGAGAATGGCCCTGGGGGCTTCATCGTCTCAAGTCCGCCAGTAAACC
 CGGTGTTTGCACCTTTGTCTGGATTCTTAATACAGATCTCAAGGGCCGCTGCCCGGTACCTCATCCAC
 CAGAGCCTCGCGCCACCATGTTTGAATTTGCCTTTCACCTGCGACAGCGCATCAGCGAGCTGGGGGCC
 GGGCG

ACGCGTACGCGGCCGCTCGAGCAGAACTCATCTCAGAAGAGGATCTGGCAGCAAATGATATCTGGATT
 ACAAGGATGACGACGATAAGGTTTAA

Protein Sequence:

>RC206802 protein sequence
 Red=Cloning site Green=Tags(s)

MSKLPRELTRDLERSLPAVASLGSLSHSQSLSSHLLPPPEKRRAISDVRRTFCLFVTFDILLFISLLWII
 ELNNTNGIRKNLEQEI IQNFKTSFFDIFVLAFFRFSGLLLGYAVLRLRHHWVIAVTTLVSSAFLIVKVI
 LSELLSKGAFGYLLPIVSVFLAWLETWFLDFKVL PQEAEEERWYLAQVAVARGPLLFSGALSEGQFYSP
 PESFAASDNESEEVAGKKSFSAQEREYIRQGKEATAVVDQILAQEENWKFEKNNEYGDVYITIEVPFHG
 KTFILKTFLLPCPAELVYQEVILQPERMVLWNTVTACQILQRVEDNTLISYDVSAGAAGGVVSPRDFVNV
 RRIERRRDYLLSSGIATSHSAKPPTHKYVRGENGGPGLIVLKSASNPRVCTFVWILNTDLKGRLPRYLIIH
 QSLAATMFEFAHLRQRISELGARA

TRTRPLEQKLISEEDLAANDILDYKDDDDKV

Chromatograms:

https://cdn.origene.com/chromatograms/mk6327_a12.zip

Restriction Sites:

Sgfl-MluI

Cloning Scheme:


ACCN: NM_006804

ORF Size: 1335 bp

OTI Disclaimer: The molecular sequence of this clone aligns with the gene accession number as a point of reference only. However, individual transcript sequences of the same gene can differ through naturally occurring variations (e.g. polymorphisms), each with its own valid existence. This clone is substantially in agreement with the reference, but a complete review of all prevailing variants is recommended prior to use. [More info](#)

OTI Annotation: This clone was engineered to express the complete ORF with an expression tag. Expression varies depending on the nature of the gene.

Components: The ORF clone is ion-exchange column purified and shipped in a 2D barcoded Matrix tube containing 10ug of transfection-ready, dried plasmid DNA (reconstitute with 100 ul of water).

- Reconstitution Method:**
1. Centrifuge at 5,000xg for 5min.
 2. Carefully open the tube and add 100ul of sterile water to dissolve the DNA.
 3. Close the tube and incubate for 10 minutes at room temperature.
 4. Briefly vortex the tube and then do a quick spin (less than 5000xg) to concentrate the liquid at the bottom.
 5. Store the suspended plasmid at -20°C. The DNA is stable for at least one year from date of shipping when stored at -20°C.

Note: Plasmids are not sterile. For experiments where strict sterility is required, filtration with 0.22um filter is required.

RefSeq: [NM_006804.2](#), [NP_006795.2](#)

RefSeq Size: 2834 bp

RefSeq ORF: 1338 bp

Locus ID: 10948

UniProt ID: [Q14849](#)

Cytogenetics: 17q12

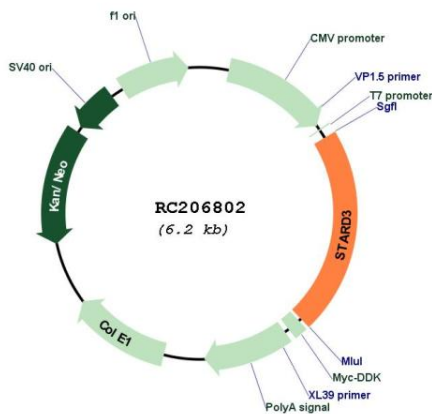
Domains: START

Protein Families: Transmembrane

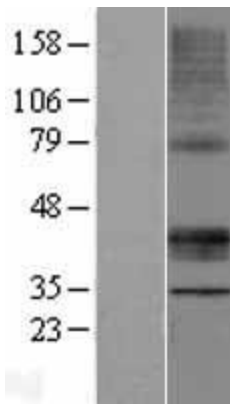
MW: 50.5 kDa

Gene Summary: This gene encodes a member of a subfamily of lipid trafficking proteins that are characterized by a C-terminal steroidogenic acute regulatory domain and an N-terminal metastatic lymph node 64 domain. The encoded protein localizes to the membranes of late endosomes and may be involved in exporting cholesterol. Alternative splicing results in multiple transcript variants.[provided by RefSeq, Oct 2009]

Product images:



Circular map for RC206802



Western blot validation of overexpression lysate (Cat# [LY431385]) using anti-DDK antibody (Cat# [TA50011-100]). Left: Cell lysates from untransfected HEK293T cells; Right: Cell lysates from HEK293T cells transfected with [RC228357] using transfection reagent MegaTran 2.0 (Cat# [TT210002]).