

## Product datasheet for RC206791

### SENP8 (NM\_145204) Human Tagged ORF Clone

#### Product data:

Product Type:	Expression Plasmids
Product Name:	SENP8 (NM_145204) Human Tagged ORF Clone
Tag:	Myc-DDK
Symbol:	SENP8
Synonyms:	DEN1; NEDP1; PRSC2
Mammalian Cell Selection:	Neomycin
Vector:	pCMV6-Entry (PS100001)
E. coli Selection:	Kanamycin (25 ug/mL)
ORF Nucleotide Sequence:	>RC206791 ORF sequence Red=Cloning site Blue=ORF Green=Tags(s)

TTTTGTAATACGACTCACTATAGGGCGGCCGGAATTCGTCGACTGGATCCGGTACCGAGGAGATCTGCCGCCCGATCGCC

ATGGACCCCGTAGTCTTGAGTTACATGGACAGTCTACTGCGGCAATCAGATGTCTCACTATTGGATCCGC  
CAAGCTGGCTCAATGACCATATTATTGGGTTTGCCTTTGAGTACTTTGCCAACAGTCAGTTTCATGACTG  
CTCTGATCAGTCAGTTTCATCAGCCCTGAAGTACCCAGTTCATCAAGTGCAGTACCAACCCAGCAGAG  
ATTGCCATGTTTCCTTGAACCACTGGACCTCCCCAACAAAGAGAGTTGTATTTTTAGCCATCAATGATAACT  
CCAACCAGGCAGCTGGAGGAACCACTGGAGTTTATTGGTCTACCTCCAAGATAAAAAATAGCTTTTTTCA  
TTATGATTTCCCATAGCAGGAGCAACTCAGTTCAGCAAAGCAGGTAGCAGAGAAACTGGAGGCTTTCTTA  
GGCAGAAAAGGAGACAACTGGCCTTTGTGGAAGAGAAAGCCCCTGCCAACAAAACAGCTATGACTGTG  
GGATGTACGTGATATGTAACACTGAGGCCTTGTGTGAGAACTTCTTTAGGCAACAGACAGAATCACTGCT  
GCAGCTACTACCCCTGCATACATCACAAAGAAGAGGGGAGAAATGGAAAGATCTCATTGCCACACTTGCT  
AAAAAG

ACGCGTACGCGGCCGCTCGAGCAGAACTCATCTCAGAAGAGGATCTGGCAGCAATGATATCCTGGATT  
ACAAGGATGACGACGATAAGGTTTAA



[View online »](#)

**Protein Sequence:** >RC206791 protein sequence  
Red=Cloning site Green=Tags(s)

MDPVVLSYMSDLLRQSDVSLDPPSWLNDHIIGFAFEYFANSQFHDCSDHVSFISPEVTQFIKCTSNPAE  
 IAMFLEPLDLPNKRVVFLAINDNSNQAAGGTHWSLLVYLQDKNSFFHYDHSRSNSVHAKQVAEKLEAFL  
 GRKGDKLAFVEEKAPAQQNSYDCGMVVICNTEALCQNFRRQTESLLQLLTPAYITKKRGEWKDLIATLA  
 KK

TRTRPLEQKLISEEDLAANDILDYKDDDDKV

**Chromatograms:** [https://cdn.origene.com/chromatograms/mk6329\\_f12.zip](https://cdn.origene.com/chromatograms/mk6329_f12.zip)

**Restriction Sites:** SgfI-MluI

**Cloning Scheme:**



**ACCN:** NM\_145204

**ORF Size:** 636 bp

**OTI Disclaimer:** The molecular sequence of this clone aligns with the gene accession number as a point of reference only. However, individual transcript sequences of the same gene can differ through naturally occurring variations (e.g. polymorphisms), each with its own valid existence. This clone is substantially in agreement with the reference, but a complete review of all prevailing variants is recommended prior to use. [More info](#)

**OTI Annotation:** This clone was engineered to express the complete ORF with an expression tag. Expression varies depending on the nature of the gene.

**Components:** The ORF clone is ion-exchange column purified and shipped in a 2D barcoded Matrix tube containing 10ug of transfection-ready, dried plasmid DNA (reconstitute with 100 ul of water).

**Reconstitution Method:**

1. Centrifuge at 5,000xg for 5min.
2. Carefully open the tube and add 100ul of sterile water to dissolve the DNA.
3. Close the tube and incubate for 10 minutes at room temperature.
4. Briefly vortex the tube and then do a quick spin (less than 5000xg) to concentrate the liquid at the bottom.
5. Store the suspended plasmid at -20°C. The DNA is stable for at least one year from date of shipping when stored at -20°C.

**RefSeq:** [NM\\_145204.2](#), [NP\\_660205.2](#)

**RefSeq Size:** 1569 bp

**RefSeq ORF:** 639 bp

**Locus ID:** 123228

**UniProt ID:** [Q96LD8](#)

**Cytogenetics:** 15q23

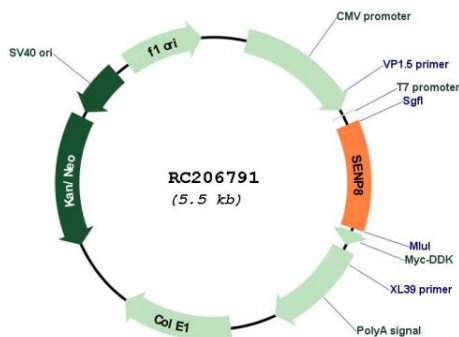
**Domains:** Peptidase\_C48

**Protein Families:** Druggable Genome, Protease

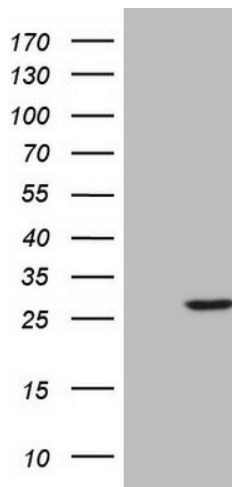
**MW:** 24.1 kDa

**Gene Summary:** This gene encodes a cysteine protease that is a member of the sentrin-specific protease family. The encoded protein is involved in processing and deconjugation of the ubiquitin-like protein termed, neural precursor cell expressed developmentally downregulated 8. Alternate splicing results in multiple transcript variants.[provided by RefSeq, Oct 2009]

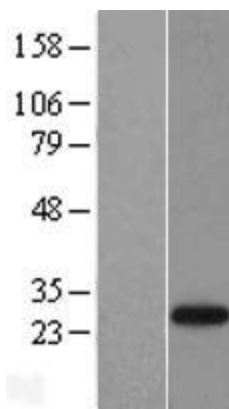
## Product images:



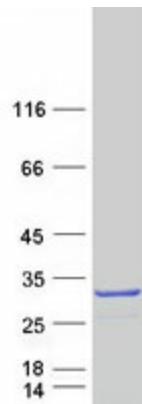
Circular map for RC206791



HEK293T cells were transfected with the pCMV6-ENTRY control (Cat# [PS100001], Left lane) or pCMV6-ENTRY SENP8 (Cat# RC206791, Right lane) cDNA for 48 hrs and lysed. Equivalent amounts of cell lysates (5 ug per lane) were separated by SDS-PAGE and immunoblotted with anti-SENP8 (Cat# [TA804753]). Positive lysates [LY407943] (100ug) and [LC407943] (20ug) can be purchased separately from OriGene.



Western blot validation of overexpression lysate (Cat# [LY407943]) using anti-DDK antibody (Cat# [TA50011-100]). Left: Cell lysates from untransfected HEK293T cells; Right: Cell lysates from HEK293T cells transfected with RC206791 using transfection reagent MegaTran 2.0 (Cat# [TT210002]).



Coomassie blue staining of purified SENP8 protein (Cat# [TP306791]). The protein was produced from HEK293T cells transfected with SENP8 cDNA clone (Cat# RC206791) using MegaTran 2.0 (Cat# [TT210002]).