

Product datasheet for RC206790

C10orf111 (NM_153244) Human Tagged ORF Clone

Product data:

Product Type: Expression Plasmids
Product Name: C10orf111 (NM_153244) Human Tagged ORF Clone
Tag: Myc-DDK
Symbol: C10orf111
Synonyms: bA455B2.4
Mammalian Cell Selection: Neomycin
Vector: pCMV6-Entry (PS100001)
E. coli Selection: Kanamycin (25 ug/mL)
ORF Nucleotide Sequence: >RC206790 ORF sequence
 Red=Cloning site Blue=ORF Green=Tags(s)

TTTTGTAATACGACTCACTATAGGGCGGCCGGAATTCGTCGACTGGATCCGGTACCGAGGAGATCTGCC
 GCC**CGATCGCC**

ATGGAATCCCTGCAGACTCCCCAGCACCGCGAAAATCAAGATAAAAGGGAGAAGGAGTATGGGGTAAAC
 ACATGCCTATGGCAATAATGCAGGGAATCTTGAGCCCGAAAAGAGAAAGGCAGTAAGAGTTGCCTTGAG
 TTCAGCAACAGCTGCACAGAATATCCCGTCCAGTGCCACTGTGGCTGCTCAAGCAATGGAGACTCAGG
 CTACCATCGGAGTCGCTGCAAAGTCGGGACAAGTGATGAAGCGCCGAATAACATTTAAAGCTCAGGA
 ATCTGGATCTGTTGATCTACCCTTGGCCAGAACTAGAAAGACGGCAGTTGCTTCTGACCTAATGAGCCT
 CCTCCTTCTCCCGCTTTTTCCGGCCTTACTTGGCCCCCTTCTTTTCTCTTTACGTATCTGCCTCCT
 TTTCTCAATCTCCTCACTGTTGTTTTGTATCCTATTTTCTGGTA

ACGCGTACGCGGCCGCTCGAGCAGAACTCATCTCAGAAGAGGATCTGGCAGCAAATGATATCCTGGATT
 ACAAGGATGACGACGATAAGGTTTAA

Protein Sequence: >RC206790 protein sequence
 Red=Cloning site Green=Tags(s)

MESLQTPQHRENQDKREKEYGVKHPMGNNAGNLEPEKRKAVRVALSSATAAQNIIPSSVHCGCSKQWRLR
 LPSESLQSRGQVMKRPNNILKLRNLDLLIYPWPELRRRQVASDLSLLLLPAFSGLTWPAPFLFLFTYLP
 FLNLLTVGFVSYFLV

TRTRPLEQKLISEEDLAANDILDYKDDDDKV

Chromatograms: https://cdn.origene.com/chromatograms/mk6329_f10.zip



[View online »](#)

Restriction Sites: SgfI-MluI

Cloning Scheme:



ACCN: NM_153244

ORF Size: 465 bp

OTI Disclaimer: The molecular sequence of this clone aligns with the gene accession number as a point of reference only. However, individual transcript sequences of the same gene can differ through naturally occurring variations (e.g. polymorphisms), each with its own valid existence. This clone is substantially in agreement with the reference, but a complete review of all prevailing variants is recommended prior to use. [More info](#)

OTI Annotation: This clone was engineered to express the complete ORF with an expression tag. Expression varies depending on the nature of the gene.

Components: The ORF clone is ion-exchange column purified and shipped in a 2D barcoded Matrix tube containing 10ug of transfection-ready, dried plasmid DNA (reconstitute with 100 ul of water).

Reconstitution Method:

1. Centrifuge at 5,000xg for 5min.
2. Carefully open the tube and add 100ul of sterile water to dissolve the DNA.
3. Close the tube and incubate for 10 minutes at room temperature.
4. Briefly vortex the tube and then do a quick spin (less than 5000xg) to concentrate the liquid at the bottom.
5. Store the suspended plasmid at -20°C. The DNA is stable for at least one year from date of shipping when stored at -20°C.

RefSeq: [NM_153244.1](#), [NP_694976.1](#)

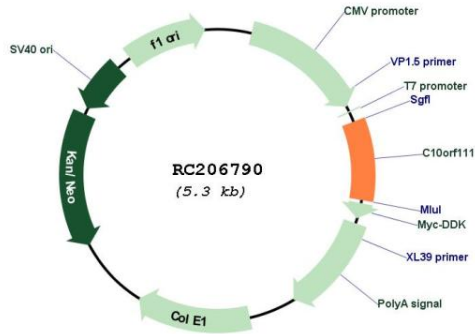
RefSeq Size: 1785 bp

RefSeq ORF: 468 bp

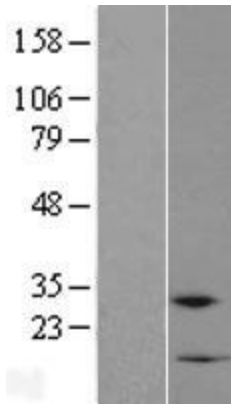
Locus ID: 221060

Cytogenetics: 10p13
Protein Families: Transmembrane
MW: 17.8 kDa

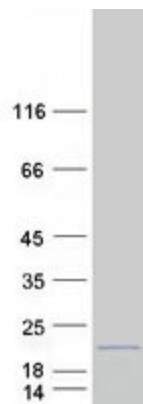
Product images:



Circular map for RC206790



Western blot validation of overexpression lysate (Cat# [LY407163]) using anti-DDK antibody (Cat# [TA50011-100]). Left: Cell lysates from untransfected HEK293T cells; Right: Cell lysates from HEK293T cells transfected with RC206790 using transfection reagent MegaTran 2.0 (Cat# [TT210002]).



Coomassie blue staining of purified C10orf111 protein (Cat# [TP306790]). The protein was produced from HEK293T cells transfected with C10orf111 cDNA clone (Cat# RC206790) using MegaTran 2.0 (Cat# [TT210002]).

