

## Product datasheet for **RC206785**

### PRR15 (NM\_175887) Human Tagged ORF Clone

#### Product data:

**Product Type:** Expression Plasmids  
**Product Name:** PRR15 (NM\_175887) Human Tagged ORF Clone  
**Tag:** Myc-DDK  
**Symbol:** PRR15  
**Mammalian Cell Selection:** Neomycin  
**Vector:** pCMV6-Entry (PS100001)  
**E. coli Selection:** Kanamycin (25 ug/mL)  
**ORF Nucleotide Sequence:** >RC206785 ORF sequence  
 Red=Cloning site Blue=ORF Green=Tags(s)

TTTTGTAAACGACTCACTATAGGGCGGCCGGAATTCGTCGACTGGATCCGGTACCGAGGAGATCTGCC  
GCC**CGATCGCC**

ATGGCCGACAGCGGCGATGCTGGCAGCTCCGGCCCTGGTGGAAATCGCTACCAACAGCAGAAAGAAA  
 GCAAGGAAGCCGAGTGGGGGTGCCGCTCCGCCAGCCCGCTCCGGGGAGCCACGCCACCTGCGCC  
 GCCAGCCCGGACTGGACCAGCAGCTCCGGGAGAACAGCACCCCAATCTCTCGGGGGCGCCGGCAG  
 CCCCCAAACCAGACAAGTTATACGGGGACAAATCCGGCAGCAGCCGCCCAATTTGAAGATCTCGCGCT  
 CCGGCCGCTTTAAGGAGAAGAGGAAAGTCCGCCACGCTGCTCCGGAGGCGGGCAGTCCCGGAGGA  
 GGCAGGCTTTCTGGTGACCCACGAGGACAAGCAG

**ACGCGT**ACGCGGCCGCTCGAGCAGAACTCATCTCAGAAGAGGATCTGGCAGCAAATGATATCTGGATT  
 ACAAGGATGACGACGATAAGGTTTAA

**Protein Sequence:** >RC206785 protein sequence  
 Red=Cloning site Green=Tags(s)

MADSGDAGSSGPWWKSLTNSRKKSKEAAVGVPPPAQPAPGEPTPPAPSPDWTSSSRENQHPNLLGGAGE  
 PPKPKLYGDKSGSSRRNLKISRSGRFKEKRKVRATLLPEAGRSPEEAGFPDPHEDKQ

**TR**TRPLEQKLISEEDLAANDILDYKDDDDKV

**Chromatograms:** [https://cdn.origene.com/chromatograms/mk6329\\_h06.zip](https://cdn.origene.com/chromatograms/mk6329_h06.zip)

**Restriction Sites:** SgfI-MluI


[View online »](#)

## Cloning Scheme:



ACCN: NM\_175887

ORF Size: 387 bp

OTI Disclaimer: The molecular sequence of this clone aligns with the gene accession number as a point of reference only. However, individual transcript sequences of the same gene can differ through naturally occurring variations (e.g. polymorphisms), each with its own valid existence. This clone is substantially in agreement with the reference, but a complete review of all prevailing variants is recommended prior to use. [More info](#)

OTI Annotation: This clone was engineered to express the complete ORF with an expression tag. Expression varies depending on the nature of the gene.

Components: The ORF clone is ion-exchange column purified and shipped in a 2D barcoded Matrix tube containing 10ug of transfection-ready, dried plasmid DNA (reconstitute with 100 ul of water).

Reconstitution Method:

1. Centrifuge at 5,000xg for 5min.
2. Carefully open the tube and add 100ul of sterile water to dissolve the DNA.
3. Close the tube and incubate for 10 minutes at room temperature.
4. Briefly vortex the tube and then do a quick spin (less than 5000xg) to concentrate the liquid at the bottom.
5. Store the suspended plasmid at -20°C. The DNA is stable for at least one year from date of shipping when stored at -20°C.

Note: Plasmids are not sterile. For experiments where strict sterility is required, filtration with 0.22um filter is required.

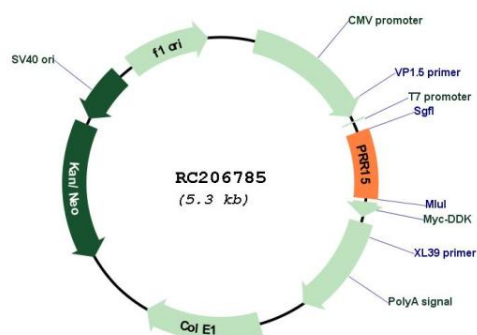
RefSeq: [NM\\_175887.3](#)

RefSeq Size: 1717 bp

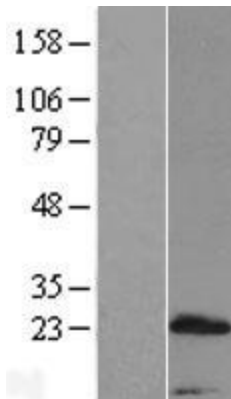
RefSeq ORF: 390 bp  
 Locus ID: 222171  
 UniProt ID: [Q8IV56](#)  
 Cytogenetics: 7p14.3  
 MW: 13.7 kDa

Gene Summary: May have a role in proliferation and/or differentiation.[UniProtKB/Swiss-Prot Function]

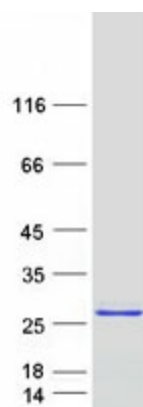
## Product images:



Circular map for RC206785



Western blot validation of overexpression lysate (Cat# [LY406198]) using anti-DDK antibody (Cat# [TA50011-100]). Left: Cell lysates from untransfected HEK293T cells; Right: Cell lysates from HEK293T cells transfected with RC206785 using transfection reagent MegaTran 2.0 (Cat# [TT210002]).



Coomassie blue staining of purified PRR15 protein (Cat# [TP306785]). The protein was produced from HEK293T cells transfected with PRR15 cDNA clone (Cat# RC206785) using MegaTran 2.0 (Cat# [TT210002]).