

Product datasheet for **RC206783**

PLD3 (NM_001031696) Human Tagged ORF Clone

Product data:

Product Type:	Expression Plasmids
Product Name:	PLD3 (NM_001031696) Human Tagged ORF Clone
Tag:	Myc-DDK
Symbol:	PLD3
Synonyms:	AD19; HU-K4; HUK4; SCA46
Mammalian Cell Selection:	Neomycin
Vector:	pCMV6-Entry (PS100001)
E. coli Selection:	Kanamycin (25 ug/mL)



[View online »](#)

ORF Nucleotide Sequence:

>RC206783 ORF sequence
 Red=Cloning site Blue=ORF Green=Tags(s)

TTTTGTAATACGACTCACTATAGGGCGGCCGGGAATTCGTCGACTGGATCCGGTACCGAGGAGATCTGCC
 GCC**GCGATCGCC**

ATGAAGCCTAAACTGATGTACCAGGAGCTGAAGGTGCCTGCAGAGGAGCCCGCCAATGAGCTGCCATGA
 ATGAGATTGAGGCGTGGAAAGCTGCGGAAAAGAAAGCCCGCTGGTCTGCTGGTCTCATTCTGGCGGT
 TGTGGGCTTCGGAGCCCTGATGACTCAGCTGTTTCTATGGGAATACGGGACTTGATCTCTTTGGGCC
 AACCCAGCGCCAGCCCTGCTATGACCCTTGCGAAGCAGTGTGGTGGAAAGCATTCTGAGGGCTGG
 ACTTCCCAATGCCTCCACGGGAAACCCTCCACCAGCCAGGCCTGGCTGGGCTGCTCGCCGGTGC
 CAGCAGCTGGACATCGCTCCTTCTACTGACCCTCACCAACAATGACACCCACACGCAGGAGCCCTCT
 GCCCAGCAGGGTGAAGGCTCCTCGGCAGCTGCAGACCCTGGCACCAGGGCGTGAACGTCGCGATCG
 CTGTGAGCAAGCCAGCGGGCCAGCCACAGGGGACCTGCAGGCTCTGCTGCAGAGCGGTGCCAGGT
 CCGCATGTTGACATGCAGAAGCTGACCATGGCGTCTGCATACCAAGTCTGGGTGGTGGACCAGACC
 CACTTCTACCTGGGCACTGCAACATGGACTGGGCTTCACTGACCAGGTCAAGGAGCTGGGCGTGGTCA
 TGTACAACCTGCAGCTGCCTGGCTCGAGACCTGACCAAGATCTTTGAGGCTACTGTTCTGGGCCAGGC
 AGGCAGCTCCATCCCATCAACTGGCCCGGTTCTATGACACCCGCTACAACCAAGAGACACCAATGGAG
 ATCTGCCTCAATGGAACCCCTGCTCTGGCTACCTGGCGAGTGCGCCCCACCCCTGTGTCCAAGTGGCC
 GCACTCCAGACCTGAAGGCTCTACTCAACGTGGTGGACAATGCCCGGAGTTTCATCTACGTCGCTGCAT
 GAACTACCTGCCACTCTGGAGTCTCCACCCTCACAGTTCGGCTGCCATTGACGATGGGCTGCGG
 CGGGCCACCTACGAGCGTGGCGTCAAGGTGCGCTGCTCATCAGCTGCTGGGACACTCGGAGCCATCCA
 TCGGGCCTTCTGCTCTCTGGCTGCCCTGCTGACAACCATCCCACTCTGACATCCAGTGA
 CTTTGTGGTCCCCGCGGATGAGGCCAGGCTCGAATCCCATATGCCCGTGTCAACCACAACAGTACATG
 GTGACTGAACGCGCCACCTACATCGGAACCTCCAAGTGGTCTGGCAACTCTTACGAGACGGCGGCA
 CCTCGCTGCTGGTACGCAGAATGGGAGGGGCGCCTGCGGAGCCAGCTGGAGGCCATTTCTGAGGGA
 CTGGGACTCCCCTACAGCCATGACCTTACACCTCAGCTGACAGCGTGGGCAACGCTGCCGCTGCTC

ACGCGTACGCGGCCGCTCGAGCAGAACTCATCTCAGAAGAGGATCTGGCAGCAATGATATCTGGATT
 ACAAGGATGACGACGATAAGGTTTAA

Protein Sequence:

>RC206783 protein sequence
 Red=Cloning site Green=Tags(s)

MKPKLMYQELKVPAAEPANELPMNEIEAWKAAEKARWVLLVLLAVVFGALMTQLFLWEYGLHLFGP
 NQRPAFCYDPCAVLVEIPEGLDFPNASTGNPSTSQAWLGLLAGAHSSLDIASFYWTLTNNDTHTQEPS
 AQQGEEVLRQLQTLAPKGVNVRIVSKPSGPQPQADLQALLQSGAQVRMVDQMQLTHGVLHTKFWVVDQT
 HFYLGANMDWRSLTQVKELGVVMYNCCLARDLTKIFEAYWFLGQAGSSIPSTWPRFYDTRYNETPME
 ICLNGTPALAYLASAPPPLCPSGRTPDLKALLNVVDNARFSIYVAVMNYLPTLEFSHPHFWPAIDDGLR
 RATYERGVKVRLLISWGHSEPSMRAFLLSLAALRDNHTSDIQVKLFVVPADAEQARIPYARVNHNKYM
 VTERATYIGTSNWSGNYFTETAGTSLLVQNGRGLRSQLEAIFLRDWDSPYSHDLDTSDSVGNACRLL

TRTRPLEQKLISEEDLAANDILDYKDDDDKV

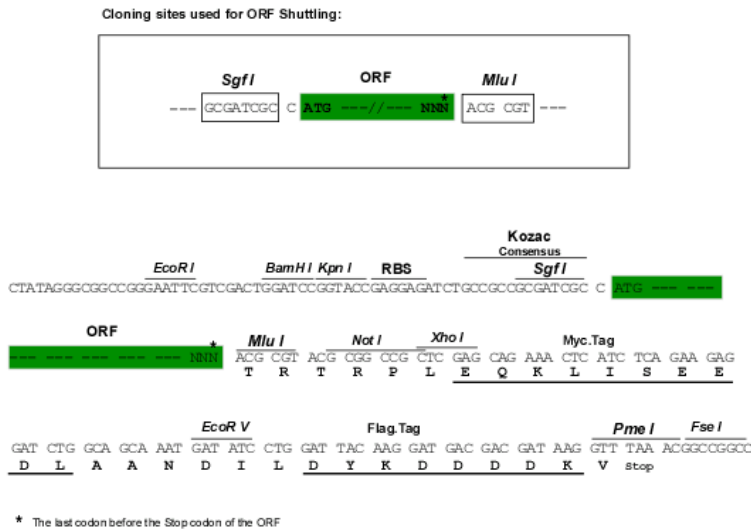
Chromatograms:

https://cdn.origene.com/chromatograms/mk6017_f12.zip

Restriction Sites:

Sgfl-MluI

Cloning Scheme:



ACCN: NM_001031696

ORF Size: 1470 bp

OTI Disclaimer: The molecular sequence of this clone aligns with the gene accession number as a point of reference only. However, individual transcript sequences of the same gene can differ through naturally occurring variations (e.g. polymorphisms), each with its own valid existence. This clone is substantially in agreement with the reference, but a complete review of all prevailing variants is recommended prior to use. [More info](#)

OTI Annotation: This clone was engineered to express the complete ORF with an expression tag. Expression varies depending on the nature of the gene.

Components: The ORF clone is ion-exchange column purified and shipped in a 2D barcoded Matrix tube containing 10ug of transfection-ready, dried plasmid DNA (reconstitute with 100 ul of water).

Reconstitution Method:

1. Centrifuge at 5,000xg for 5min.
2. Carefully open the tube and add 100ul of sterile water to dissolve the DNA.
3. Close the tube and incubate for 10 minutes at room temperature.
4. Briefly vortex the tube and then do a quick spin (less than 5000xg) to concentrate the liquid at the bottom.
5. Store the suspended plasmid at -20°C. The DNA is stable for at least one year from date of shipping when stored at -20°C.

RefSeq: [NM_001031696.3](#)

RefSeq Size: 2207 bp

RefSeq ORF: 1473 bp

Locus ID: 23646

UniProt ID: [Q8IV08](#)

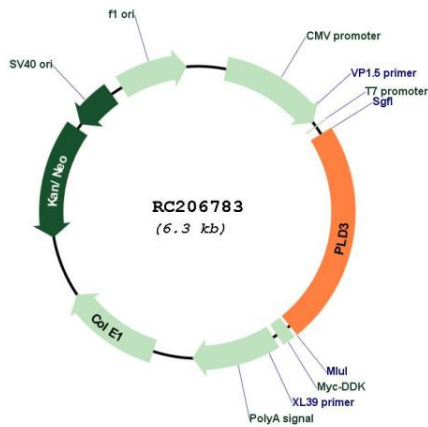
Cytogenetics: 19q13.2

Protein Families: Transmembrane

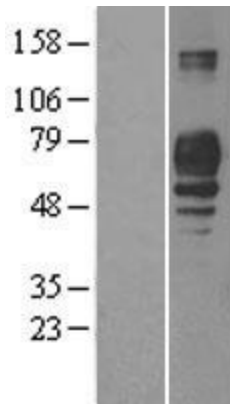
MW: 54.7 kDa

Gene Summary: This gene encodes a member of the phospholipase D (PLD) family of enzymes that catalyze the hydrolysis of membrane phospholipids. The encoded protein is a single-pass type II membrane protein and contains two PLD phosphodiesterase domains. This protein influences processing of amyloid-beta precursor protein. Mutations in this gene are associated with Alzheimer disease risk. Alternatively spliced transcript variants encoding the same protein have been found for this gene. [provided by RefSeq, Apr 2014]

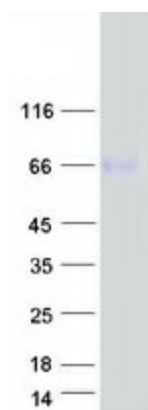
Product images:



Circular map for RC206783



Western blot validation of overexpression lysate (Cat# [LY415872]) using anti-DDK antibody (Cat# [TA50011-100]). Left: Cell lysates from untransfected HEK293T cells; Right: Cell lysates from HEK293T cells transfected with [RC218761] using transfection reagent MegaTran 2.0 (Cat# [TT210002]).



Coomassie blue staining of purified PLD3 protein (Cat# [TP306783]). The protein was produced from HEK293T cells transfected with PLD3 cDNA clone (Cat# RC206783) using MegaTran 2.0 (Cat# [TT210002]).