

## Product datasheet for **RC206780**

### LRG1 (NM\_052972) Human Tagged ORF Clone

#### Product data:

Product Type:	Expression Plasmids
Product Name:	LRG1 (NM_052972) Human Tagged ORF Clone
Tag:	Myc-DDK
Symbol:	LRG1
Synonyms:	HMFT1766; LRG
Mammalian Cell Selection:	Neomycin
Vector:	pCMV6-Entry (PS100001)
E. coli Selection:	Kanamycin (25 ug/mL)
ORF Nucleotide Sequence:	>RC206780 ORF sequence Red=Cloning site Blue=ORF Green=Tags(s)

TTTTGTAATACGACTCACTATAGGGCGGCCGGAATTCGTCGACTGGATCCGGTACCGAGGAGATCTGCC  
GCC**CGATCGCC**

ATGTCCTCTTGGAGCAGACAGCGACCAAAAAGCCAGGGGGCATTCAACCCCATGTTTCTAGAACTCTGT  
TCCTGCTGCTGCTGTTGGCAGCCTCAGCCTGGGGGTACCCCTGAGCCCCAAAGACTGCCAGGTGTTCCG  
CTCAGACCATGGCAGCTCCATCTCCTGTCAACCACCTGCCGAAATCCCCGGCTACCTGCCAGCCGACACC  
GTGCACCTGGCCGTGGAATCTTCAACCTGACCCACCTGCCAGCAACCTCCTCCAGGGCGCCTCTAAGC  
TCCAAGAATTGCACCTCTCCAGCAATGGGCTGGAAGCCTCTCGCCGAATTCCTGCGGCCAGTGCCGCA  
GCTGAGGGTGTGGATCTAACCCGAAACGCCCTGACCGGGTGCCTCGGGCCTCTCCAGGCCTCAGCC  
ACCCTGGACACCCTGGTATTGAAAGAAAACCAGCTGGAGGTCTGGAGGTCTCGTGGCTACACGGCCTGA  
AAGCTCTGGGGCATCTGGACCTGTCTGGGAACCGCCTCCGAAACTGCCCCCGGGCTGTGGCCAACTT  
CACCCCTCTGCGCACCTTGACCTTGGGGAGAACCAGTTGGAGACCTTGCCACCTGACCTCTGAGGGGT  
CCGCTGCAATTAGAACGGCTACATCTAGAAGGCAACAAATTGCAAGTACTGGGAAAAGATCTCCTTTGC  
CGCAGCCGGACCTGCGCTACCTCTTCTGAACGGCAACAAGCTGGCCAGGGTGGCAGCCGGTGCCTTCCA  
GGCCTGCGGCAGCTGGACATGCTGGACCTCTCCAATAACTCACTGGCCAGCGTGCCCGAGGGGCTCTGG  
GCATCCCTAGGGCAGCCAAACTGGGACATGCGGGATGGCTTCGACATCTCCGGCAACCCCTGGATCTGTG  
ACCAGAACTGAGCGACCTCTATCGTTGGCTTCAGGCCCAAAAAGACAAGATGTTTTCCAGAATGACAC  
CGCTGTGCTGGCCTGAAGCCGTGAAGGGCCAGACGCTCCTGGCAGTGCCCAAGTCCCAG

**ACGCGT**ACGCGGCCGCTCGAGCAGAAACTCATCTCAGAAGAGGATCTGGCAGCAATGATATCCTGGATT  
ACAAGGATGACGACGATAAGGTTTAA



[View online »](#)

**Protein Sequence:** >RC206780 protein sequence  
Red=Cloning site Green=Tags(s)

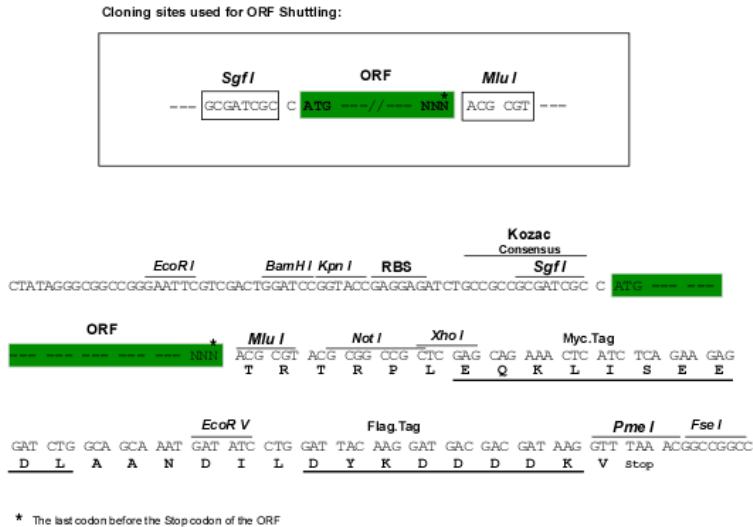
MSSWSRQRPKSPGGIQPHVSRTLFLLLLLAASAWGVTLSPKDCQVFRSDHGSSISCQPPAEIPGYLPADT  
 VHLAVEFFNLTHLPANLLQGASKLQELHLSSNGLESLSPEFLRPVQLRVLDLTRNALTGLPSGLFQASA  
 TLDLTVLKENQLEVLVSWLHGLKALGHLDSLGNLRKLPGLANFTLLRDLDLGENQLETLPPDLLRG  
 PLQLERLHLEGNKLQVLGKDLLLPQDLRYLFLNGNKLARVAAGAFQGLRQLDMLDLNNLSASVPEGLW  
 ASLGQPNWDMRDGFDISGNPWICDQNLSDLYRWLQAQKDKMFSQNDTRCAGPEAVKGQTLAVAKSQ

TRTRPLEQKLISEEDLAANDILDYKDDDDKV

**Chromatograms:** [https://cdn.origene.com/chromatograms/mk6197\\_b04.zip](https://cdn.origene.com/chromatograms/mk6197_b04.zip)

**Restriction Sites:** SgfI-MluI

**Cloning Scheme:**



**ACCN:** NM\_052972

**ORF Size:** 1041 bp

**OTI Disclaimer:** The molecular sequence of this clone aligns with the gene accession number as a point of reference only. However, individual transcript sequences of the same gene can differ through naturally occurring variations (e.g. polymorphisms), each with its own valid existence. This clone is substantially in agreement with the reference, but a complete review of all prevailing variants is recommended prior to use. [More info](#)

**OTI Annotation:** This clone was engineered to express the complete ORF with an expression tag. Expression varies depending on the nature of the gene.

**Components:** The ORF clone is ion-exchange column purified and shipped in a 2D barcoded Matrix tube containing 10ug of transfection-ready, dried plasmid DNA (reconstitute with 100 ul of water).

**Reconstitution Method:**

1. Centrifuge at 5,000xg for 5min.
2. Carefully open the tube and add 100ul of sterile water to dissolve the DNA.
3. Close the tube and incubate for 10 minutes at room temperature.
4. Briefly vortex the tube and then do a quick spin (less than 5000xg) to concentrate the liquid at the bottom.
5. Store the suspended plasmid at -20°C. The DNA is stable for at least one year from date of shipping when stored at -20°C.

**RefSeq:** [NM\\_052972.3](#)

**RefSeq Size:** 1780 bp

**RefSeq ORF:** 1044 bp

**Locus ID:** 116844

**UniProt ID:** [P02750](#)

**Cytogenetics:** 19p13.3

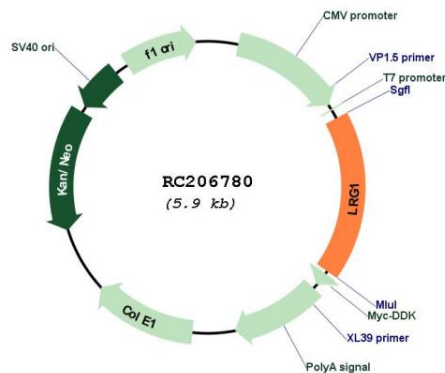
**Domains:** LRRCT, LRR, LRR\_TYP, LRR\_PS

**Protein Families:** Secreted Protein

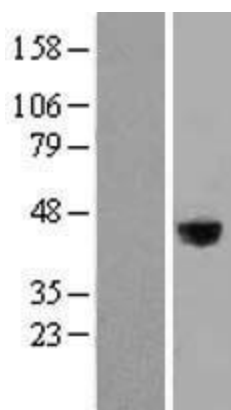
**MW:** 38.2 kDa

**Gene Summary:** The leucine-rich repeat (LRR) family of proteins, including LRG1, have been shown to be involved in protein-protein interaction, signal transduction, and cell adhesion and development. LRG1 is expressed during granulocyte differentiation (O'Donnell et al., 2002 [PubMed 12223515]).[supplied by OMIM, Mar 2008]

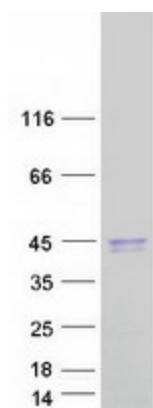
## Product images:



Circular map for RC206780



Western blot validation of overexpression lysate (Cat# [LY403277]) using anti-DDK antibody (Cat# [TA50011-100]). Left: Cell lysates from untransfected HEK293T cells; Right: Cell lysates from HEK293T cells transfected with RC206780 using transfection reagent MegaTran 2.0 (Cat# [TT210002]).



Coomassie blue staining of purified LRG1 protein (Cat# [TP306780]). The protein was produced from HEK293T cells transfected with LRG1 cDNA clone (Cat# RC206780) using MegaTran 2.0 (Cat# [TT210002]).