

Product datasheet for RC206778

CYTL1 (NM_018659) Human Tagged ORF Clone

Product data:

Product Type: Expression Plasmids
Product Name: CYTL1 (NM_018659) Human Tagged ORF Clone
Tag: Myc-DDK
Symbol: CYTL1
Synonyms: C4orf4; C17
Mammalian Cell Selection: Neomycin
Vector: pCMV6-Entry (PS100001)
E. coli Selection: Kanamycin (25 ug/mL)
ORF Nucleotide Sequence: >RC206778 ORF sequence
 Red=Cloning site Blue=ORF Green=Tags(s)

TTTTGTAATACGACTCACTATAGGGCGGCCGGAATTCGTCGACTGGATCCGGTACCGAGGAGATCTGCC
GCC**CGATCGCC**

ATGAGGACGCCTGGGCTCTGCCGTGCTGCTGCTCCTGGCGGAGCCCCGCCGCGGCCCACTC
CCCCGACTGCTACTCCCGCATGCGGGCCCTGAGCCAGGAGATCACCCGCGACTTCAACCTCCTGCAGGT
CTCGGAGCCCTCGGAGCCATGTGTGAGATACCTGCCAGGCTGTACCTGGACATACACAATTACTGTGTG
CTGGACAAGCTGCGGGACTTTGTGGCTCGCCCCGTGTGGAAAGTGGCCAGGTAGATTCCTGAAGG
ACAAAGCACGGAAGCTGTACACCATCATGAACCTGTTCTGCAGGAGAGATTTGGTATTCTGTTGGATGA
CTGCAATGCCTTGAATACCCAATCCAGTGACTACGGTCTGCCAGATCGTCAGCGC

ACGCGTACGCGGCCGCTCGAGCAGAACTCATCTCAGAAGAGGATCTGGCAGCAAATGATATCCTGGATT
ACAAGGATGACGACGATAAGGTTTAA

Protein Sequence: >RC206778 protein sequence
 Red=Cloning site Green=Tags(s)

MRTPGPLPVLLLLLAGAAPAARPTPTCYSRMRALSQEITRDFNLLQVSEPEPCVRYLPRLYLDIHNYCV
LDKLRDFVASPPCWKVAQVDSLKDKARKLYTIMNSFCRRDLVFLDDCNALEYPIPVTTVLPDRQR

TRTRPLEQKLISEEDLAANDILDYKDDDDKV

Chromatograms: https://cdn.origene.com/chromatograms/mk6329_c01.zip

Restriction Sites: SgfI-MluI



[View online »](#)

Cloning Scheme:


ACCN: NM_018659

ORF Size: 408 bp

OTI Disclaimer: The molecular sequence of this clone aligns with the gene accession number as a point of reference only. However, individual transcript sequences of the same gene can differ through naturally occurring variations (e.g. polymorphisms), each with its own valid existence. This clone is substantially in agreement with the reference, but a complete review of all prevailing variants is recommended prior to use. [More info](#)

OTI Annotation: This clone was engineered to express the complete ORF with an expression tag. Expression varies depending on the nature of the gene.

Components: The ORF clone is ion-exchange column purified and shipped in a 2D barcoded Matrix tube containing 10ug of transfection-ready, dried plasmid DNA (reconstitute with 100 ul of water).

- Reconstitution Method:**
1. Centrifuge at 5,000xg for 5min.
 2. Carefully open the tube and add 100ul of sterile water to dissolve the DNA.
 3. Close the tube and incubate for 10 minutes at room temperature.
 4. Briefly vortex the tube and then do a quick spin (less than 5000xg) to concentrate the liquid at the bottom.
 5. Store the suspended plasmid at -20°C. The DNA is stable for at least one year from date of shipping when stored at -20°C.

RefSeq: [NM_018659.3](#)

RefSeq Size: 1019 bp

RefSeq ORF: 411 bp

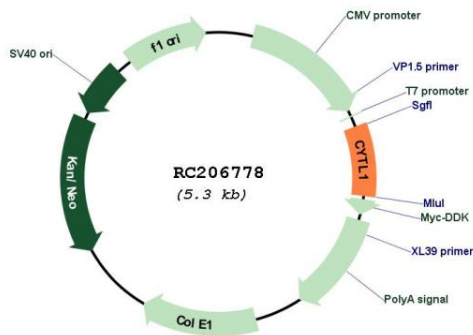
Locus ID: 54360

UniProt ID: [Q9NRR1](#)

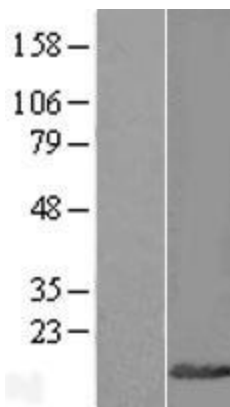
Cytogenetics: 4p16.2
Protein Families: Druggable Genome, Secreted Protein
MW: 15.6 kDa

Gene Summary: C17 is a cytokine-like protein specifically expressed in bone marrow and cord blood mononuclear cells that bear the CD34 (MIM 142230) surface marker (Liu et al., 2000 [PubMed 10857752]).[supplied by OMIM, Mar 2008]

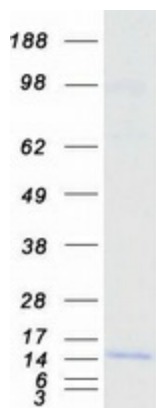
Product images:



Circular map for RC206778



Western blot validation of overexpression lysate (Cat# [LY412966]) using anti-DDK antibody (Cat# [TA50011-100]). Left: Cell lysates from untransfected HEK293T cells; Right: Cell lysates from HEK293T cells transfected with RC206778 using transfection reagent MegaTran 2.0 (Cat# [TT210002]).



Coomassie blue staining of purified CYTL1 protein (Cat# [TP306778]). The protein was produced from HEK293T cells transfected with CYTL1 cDNA clone (Cat# RC206778) using MegaTran 2.0 (Cat# [TT210002]).