

Product datasheet for RC206773

Membrin (GOSR2) (NM_001012511) Human Tagged ORF Clone

Product data:

Product Type: Expression Plasmids
Product Name: Membrin (GOSR2) (NM_001012511) Human Tagged ORF Clone
Tag: Myc-DDK
Symbol: Membrin
Synonyms: Bos1; EPM6; GS27
Mammalian Cell Selection: Neomycin
Vector: pCMV6-Entry (PS100001)
E. coli Selection: Kanamycin (25 ug/mL)
ORF Nucleotide Sequence: >RC206773 ORF sequence
 Red=Cloning site Blue=ORF Green=Tags(s)

TTTTGTAATACGACTCACTATAGGGCGCCGGGAATTCGTCGACTGGATCCGGTACCGAGGAGATCTGCC
 GCC**CGATCGCC**

ATGGATCCCCTGTTCCAGCAAACGCACAAGCAGGTCCACGAGATCCAGTCTTGATGGGACGCCTGGAGA
 CGGCAGACAAGCAGTCTGTGCACATAGTAGAAAACGAAATCCAAGCAAGCATAGACCAGATATTCAGCCG
 TCTAGAACGTCTGGAGATTTTGTCCAGCAAGGAGCCCCCTAACAAAAGGCAAAATGCCAGACTTCGGGT
 GACCAGTTAAAGTATGATGTCCAGCACCTGCAGACTGCGCTCAGAACTCCAGCATCGGCATGCA
 GGGAGCAGCAGGAGAGACAGCGAGAAGAGCTTCTGTCTCGAACCTCACCCTAACGACTCTGACACCAC
 CATACCAATGGACGAATCACTGCAGTTAACTCCTCCCTCCAGAAAGTTCACAACGGCATGGATGACCTC
 ATTTTAGATGGGCACAATATTTTAGATGGACTGAGGACCCAGAGACTGACCTGAAGGTGGGGTCCCTGC
 TGGGGGACAGAGAGAAGGCCTCTGTTTTAGCCTCATCCAACAGTTAGTAACTGTGTTATATTTGAT
 TACGTGTCCTCAAATTGTGATATTT

ACGCGTACGCGGCCGCTCGAGCAGAACTCATCTCAGAAGAGGATCTGGCAGCAAATGATATCCTGGATT
 ACAAGGATGACGACGATAAGGTTTAA

Protein Sequence: >RC206773 protein sequence
 Red=Cloning site Green=Tags(s)

MDPLFQQTHKQVHEIQSCMGRLETADKQSVHIVENEIQASIDQIFSRLEILSSKEPPNKRQNRRLRV
 DQLKYDVQHLQTALRNFQHRHAREQERQREELL SRTFTTNDSDTTIPMDESLQFNSSLQKVHNGMDDL
 ILDGHNILDGLRTQRLTLKVGSLLDREKASCSLIQQFSNCVYILITCPQIVIF

TRTRPLEQKLISEEDLAANDILDYKDDDDKV



[View online »](#)

Chromatograms: https://cdn.origene.com/chromatograms/mk6520_b10.zip

Restriction Sites: SgfI-MluI

Cloning Scheme:



ACCN: NM_001012511

ORF Size: 585 bp

OTI Disclaimer: The molecular sequence of this clone aligns with the gene accession number as a point of reference only. However, individual transcript sequences of the same gene can differ through naturally occurring variations (e.g. polymorphisms), each with its own valid existence. This clone is substantially in agreement with the reference, but a complete review of all prevailing variants is recommended prior to use. [More info](#)

OTI Annotation: This clone was engineered to express the complete ORF with an expression tag. Expression varies depending on the nature of the gene.

Components: The ORF clone is ion-exchange column purified and shipped in a 2D barcoded Matrix tube containing 10ug of transfection-ready, dried plasmid DNA (reconstitute with 100 ul of water).

Reconstitution Method:

1. Centrifuge at 5,000xg for 5min.
2. Carefully open the tube and add 100ul of sterile water to dissolve the DNA.
3. Close the tube and incubate for 10 minutes at room temperature.
4. Briefly vortex the tube and then do a quick spin (less than 5000xg) to concentrate the liquid at the bottom.
5. Store the suspended plasmid at -20°C. The DNA is stable for at least one year from date of shipping when stored at -20°C.

RefSeq: [NM_001012511.2](#)

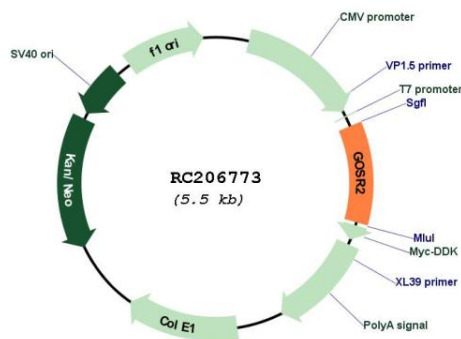
RefSeq Size: 2220 bp

RefSeq ORF: 588 bp

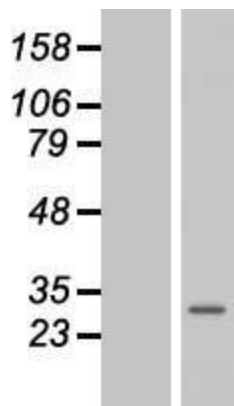
Locus ID: 9570

UniProt ID: [O14653](#)
Cytogenetics: 17q21.32
Protein Families: Druggable Genome, Transmembrane
Protein Pathways: SNARE interactions in vesicular transport
MW: 22.7 kDa
Gene Summary: This gene encodes a trafficking membrane protein which transports proteins among the medial- and trans-Golgi compartments. Due to its chromosomal location and trafficking function, this gene may be involved in familial essential hypertension. [provided by RefSeq, Mar 2016]

Product images:



Circular map for RC206773



Western blot validation of overexpression lysate (Cat# [LY422877]) using anti-DDK antibody (Cat# [TA50011-100]). Left: Cell lysates from untransfected HEK293T cells; Right: Cell lysates from HEK293T cells transfected with RC206773 using transfection reagent MegaTran 2.0 (Cat# [TT210002]).