

Product datasheet for **RC206770**

ANKMY2 (NM_020319) Human Tagged ORF Clone

Product data:

Product Type:	Expression Plasmids
Product Name:	ANKMY2 (NM_020319) Human Tagged ORF Clone
Tag:	Myc-DDK
Symbol:	ANKMY2
Synonyms:	ZMYND20
Mammalian Cell Selection:	Neomycin
Vector:	pCMV6-Entry (PS100001)
E. coli Selection:	Kanamycin (25 ug/mL)



[View online »](#)

ORF Nucleotide Sequence:

>RC206770 ORF sequence
 Red=Cloning site Blue=ORF Green=Tags(s)

TTTTGTAATACGACTCACTATAGGGCGGCCGGAATTCGTCGACTGGATCCGGTACCGAGGAGATCTGCC
 GCC**CGGATCGCC**

ATGGTTACATAAAGAAAGGCGAGCTGACCCAGGAGGAGAAGGAGCTACTGGAAGTCATCGGAAAGGTA
 CTGTCCAAGAAGCTGGAACATTATTATCCAGCAAGAATGTTCTGTCAACTGTTTGGACGAGAATGGAAT
 GACTCCTCTAATGCATGCAGCATATAAAGGAAAACCTCGATATGTGCAAACTACTACTGCGACATGGAGCC
 GATGTAATTGTCATCAGCATGAACATGGATACACAGCCCTCATGTTTGTGCACTTTCTGGTAATAAAG
 ACATCACATGGGTAAATGTTAGAAGCTGGTGTGAGACAGATGTTGTCAACTCTGTGGGAAGAACAGCAGC
 TCAGATGGCAGCCTTTGTGGTCAACATGATTGTGTGACCATAATCAACAATTTCTTCTCGAGAGAGA
 CTGGATTATTACACTAAGCCCCAGGACTGGATAAAGAGCCAAAACCTGCCCCAAAGTTGGCAGGCCCGC
 TGCACAAAATTATCACCACAACGAATCTTCATCCTGTCAAGATCGTGATGCTTGTAAATGAGAATCTCT
 GCTGACAGAAGAAGCAGCCCTGAATAAATGCTACAGAGTGATGGATTTGATTTGTGAGAAATGTATGAAG
 CAAAGAGACATGAATGAAGTATTGGCTATGAAGATGCATTACATAAGCTGTATCTTTCAGAAATGCATTA
 ACTTCTTAAAAGATGGAGAGAATAAACTGGACACCTTGATCAAAAAGCTTGTTAAAAGGCCGAGCTTCTGA
 TGGCTTCCAGTGTATCAAGAAAAGATCATTAGAGAAAAGTATCAGAAAATTTCTTACTGTGAAGCTACA
 CTCCTCCAGCAGCTGGTTCGAAGCATTGCTCCTGTTGAAATTGGTTCTGATCCCCTGCATTCTCCGTCC
 TTACCCAAGCCATCACTGGCCAGGTGGGTTTTGTGGATGTGGAATTTTGCCTACCTGTGGAGAAAAGGG
 AGCAAGTAAAAGATGTTCAAGTTTGCAAAATGGTAATATATTGTGATCAAACCTGCCAGAAAACACTGG
 TTTACTCATAAGAAAATCTGTAAGAATCTGAAGGACATTTACGAAAAGCAACAGTTGGAGGCTGCCAAAG
 AAAAGAGACAAGAGGAAAACACGGCAAACCTTGATGCAATTCTAACTGTGTTAATGAAGAGCAACCAGA
 GGCTGAAGTAGGTATCTCTCAAAAAGGATTCTAATCCTGAAGATTCGGGGGAAGGAAAAGAAAGAATCTCT
 GAAAGCGAAGCTGAGTTGGAAGGCTTACAGGATGCTCCTGCAGGGCCACAGGTGTCTGAGGAG

ACGCGTACGCGGCCGCTCGAGCAGAAACTCATCTCAGAAGAGGATCTGGCAGCAAATGATATCCTGGATT
 ACAAGGATGACGACGATAAGGTTTAA

Protein Sequence:

>RC206770 protein sequence
 Red=Cloning site Green=Tags(s)

MVHIKKGELTQEEKELLEVIKGTVQEAGTLLSSKNVRVNCLDENGMTPLMHAAYKGLDMCKLLLRHGA
 DVNCHQHEHYTALMFAALSGNKDITWVMLEAGAETDVVNSVGRATAQMAAFVQGHDCVTIINNFFPRER
 LDYYTKPQGLDKEPKLPPKLAGPLHKIITTTNLHPVKIVMLVNNPPLLTEEAALNKCYRVMDLICEKCMK
 QRD MNV LAMKMHYISCFQKINFLKDGKNDLTIKSLKGRASDGFVYQEKI IRESIRKFPYCEAT
 LLQQLVRSIAPVEIGSDPTAFSVLTQAITGQVGFVDVEFCTTCGEKGASKRCSVCKMVIYCDQTCQKTHW
 FTHKKICKNLKDIYEKQQL EAAKEKRQEENHGKLDVNSNVCYNEEQPEAEVGISQKDSNPEDSGEGKKESE
 ESEAELEGLQDAPAGPQVSEE

TRTRPLEQKLISEEDLAANDILDYKDDDDKV

Chromatograms:

https://cdn.origene.com/chromatograms/mk6329_d04.zip

Restriction Sites:

Sgfl-Mlul

Cloning Scheme:

ACCN: NM_020319

ORF Size: 1323 bp

OTI Disclaimer: The molecular sequence of this clone aligns with the gene accession number as a point of reference only. However, individual transcript sequences of the same gene can differ through naturally occurring variations (e.g. polymorphisms), each with its own valid existence. This clone is substantially in agreement with the reference, but a complete review of all prevailing variants is recommended prior to use. [More info](#)

OTI Annotation: This clone was engineered to express the complete ORF with an expression tag. Expression varies depending on the nature of the gene.

Components: The ORF clone is ion-exchange column purified and shipped in a 2D barcoded Matrix tube containing 10ug of transfection-ready, dried plasmid DNA (reconstitute with 100 ul of water).

Reconstitution Method:

1. Centrifuge at 5,000xg for 5min.
2. Carefully open the tube and add 100ul of sterile water to dissolve the DNA.
3. Close the tube and incubate for 10 minutes at room temperature.
4. Briefly vortex the tube and then do a quick spin (less than 5000xg) to concentrate the liquid at the bottom.
5. Store the suspended plasmid at -20°C. The DNA is stable for at least one year from date of shipping when stored at -20°C.

RefSeq: [NM_020319.1](#), [NP_064715.1](#)
RefSeq Size: 2567 bp

RefSeq ORF: 1326 bp

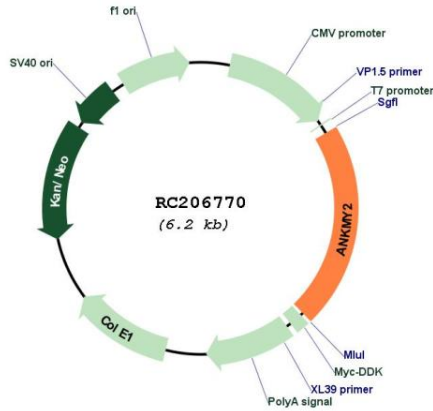
Locus ID: 57037

UniProt ID: [Q8IV38](#)
Cytogenetics: 7p21.1

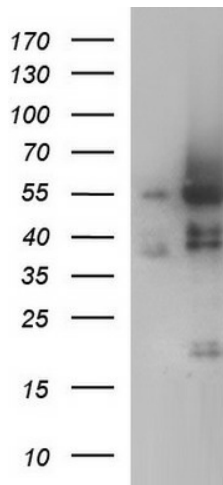
MW: 49.3 kDa

Gene Summary: May be involved in the trafficking of signaling proteins to the cilia.[UniProtKB/Swiss-Prot Function]

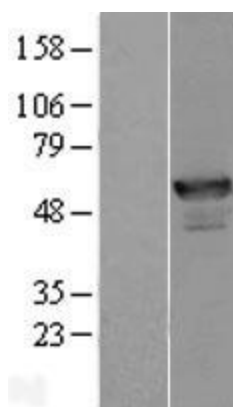
Product images:



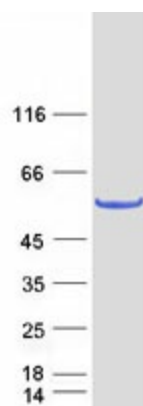
Circular map for RC206770



HEK293T cells were transfected with the pCMV6-ENTRY control (Cat# [PS100001], Left lane) or pCMV6-ENTRY ANKMY2 (Cat# RC206770, Right lane) cDNA for 48 hrs and lysed. Equivalent amounts of cell lysates (5 ug per lane) were separated by SDS-PAGE and immunoblotted with anti-ANKMY2(Cat# [TA507305]). Positive lysates [LY412559] (100ug) and [LC412559] (20ug) can be purchased separately from OriGene.



Western blot validation of overexpression lysate (Cat# [LY412559]) using anti-DDK antibody (Cat# [TA50011-100]). Left: Cell lysates from untransfected HEK293T cells; Right: Cell lysates from HEK293T cells transfected with RC206770 using transfection reagent MegaTran 2.0 (Cat# [TT210002]).



Coomassie blue staining of purified ANKMY2 protein (Cat# [TP306770]). The protein was produced from HEK293T cells transfected with ANKMY2 cDNA clone (Cat# RC206770) using MegaTran 2.0 (Cat# [TT210002]).