

## Product datasheet for RC206764

### SPON2 (NM\_012445) Human Tagged ORF Clone

#### Product data:

Product Type:	Expression Plasmids
Product Name:	SPON2 (NM_012445) Human Tagged ORF Clone
Tag:	Myc-DDK
Symbol:	SPON2
Synonyms:	DIL-1; DIL1; M-SPONDIN; MINDIN
Mammalian Cell Selection:	Neomycin
Vector:	pCMV6-Entry (PS100001)
E. coli Selection:	Kanamycin (25 ug/mL)
ORF Nucleotide Sequence:	>RC206764 representing NM_012445 Red=Cloning site Blue=ORF Green=Tags(s)

TTTTGTAATACGACTCACTATAGGGCGGCCGGAATTCGTCGACTGGATCCGGTACCGAGGAGATCTGCC  
GCC**CGATCGCC**

ATGAAAACCCAGCCCGCCGCCCTGGCAAGGCCCTCTGCGCTCTCTCTGGCCACTCTCGGCG  
CCGCCGGCAGCCTTTGGGGGAGAGTCCATCTGTTCCGCCAGAGCCCGCCAAATACAGCATCACCTT  
CACGGCAAGTGGAGCCAGACGGCCTTCCCAAGCAGTACCCCTGTTCCGCCCCCTGCGCAGTGGTCT  
TCGCTGCTGGGGCCGCGCATAGCTCCGACTACAGCATGTGGAGGAAGAACCAGTACGTAGTAACGGG  
TGCAGACTTTGCGGAGCGGGGAGGCCCTGGGCGCTGATGAAGGAGATCGAGGCGCGGGGAGGCGCT  
GCAGAGCGTGCACGAGGTGTTTTCGGCGCCCGCGTCCCAAGCGCACCGGGCAGACGTGCGCGGAGCTG  
GAGGTGCAGCGCAGGCACTCGCTGGTCTCGTTTGTGGTGCATCGTGCCAGCCCCGACTGGTTCTGG  
GCGTGGACAGCCTGGACCTGTGCGACGGGGACCGTTGGCGGGAACAGGCGGCGCTGGACCTGTACCCCTA  
CGACGCCGGGACGGACAGCGGCTTACCTTCTCTCCCCAACTTCGCCACCATCCCGCAGGACACGGTG  
ACCGAGATAACGTCTCTCTCCAGCCACCGGCCAACTCTTCTACTACCCGCGGCTGAAGGCCCTGC  
CTCCATCGCCAGGGTACACTGCTGCGGCTGCGACAGAGCCCCAGGGCCTTCATCCCTCCCGCCCCAGT  
CCTGCCAGCAGGACAATGAGATTGTAGACAGCGCCTCAGTTCAGAAACGCCGCTGGACTGCGAGGTC  
TCCCTGTGGTCTCTGGGACTGTGCGGAGGCCACTGTGGGAGGCTCGGGACCAAGAGCAGGACTCGT  
ACGTCCGGGTCCAGCCCGCAACACGGGAGCCCTGCCCGAGCTCGAAGAAGAGGCTGAGTGCGTCCC  
TGATAACTGCGTC

**ACGCGT**ACGCGGCGGCTCGAGCAGAACTCATCTCAGAAGAGGATCTGGCAGCAAATGATATCCTGGATT  
ACAAGGATGACGACGATAAGGTTTAA



[View online »](#)

**Protein Sequence:** >RC206764 representing NM\_012445  
Red=Cloning site Green=Tags(s)

MENPSPAALGKALCALLLATLGAAGQPLGGESIC SARAPAKYSITFTGKWSQTAFPKQYPLFRPPAQWS  
 SLLGAAHSSDYSMWRKNQYVSNGLRDF AERGEAWALMKEIEAAGEALQSVHEVFSAPAVPSGTGQTS AEL  
 EVQRRHSLVSVFVVRIVSPDWFVGVDSLDCDGRWREQAALDL YPYDAGTDSGF T FSSPNFATIPQDTV  
 TEITSSSPSHPANSFYYPRLKALPPIARVTLRLRQSPRAFIPPAPVLP SRDNEIVDSASVPETPLDCEV  
 SLWSSWGLCGGHCGRLGTKSRTRYVRVQPANNGSPCELEEEEAECVPDNCV

TRTRPLEQKLISEEDLAANDILDYKDDDDKV

**Chromatograms:** [https://cdn.origene.com/chromatograms/mg2780\\_c09.zip](https://cdn.origene.com/chromatograms/mg2780_c09.zip)

**Restriction Sites:** SgfI-MluI

**Cloning Scheme:**



**ACCN:** NM\_012445

**ORF Size:** 993 bp

**OTI Disclaimer:** The molecular sequence of this clone aligns with the gene accession number as a point of reference only. However, individual transcript sequences of the same gene can differ through naturally occurring variations (e.g. polymorphisms), each with its own valid existence. This clone is substantially in agreement with the reference, but a complete review of all prevailing variants is recommended prior to use. [More info](#)

**OTI Annotation:** This clone was engineered to express the complete ORF with an expression tag. Expression varies depending on the nature of the gene.

**Components:** The ORF clone is ion-exchange column purified and shipped in a 2D barcoded Matrix tube containing 10ug of transfection-ready, dried plasmid DNA (reconstitute with 100 ul of water).

**Reconstitution Method:**

1. Centrifuge at 5,000xg for 5min.
2. Carefully open the tube and add 100ul of sterile water to dissolve the DNA.
3. Close the tube and incubate for 10 minutes at room temperature.
4. Briefly vortex the tube and then do a quick spin (less than 5000xg) to concentrate the liquid at the bottom.
5. Store the suspended plasmid at -20°C. The DNA is stable for at least one year from date of shipping when stored at -20°C.

**RefSeq:** [NM\\_012445.4](#)

**RefSeq Size:** 1807 bp

**RefSeq ORF:** 996 bp

**Locus ID:** 10417

**UniProt ID:** [Q9BUD6](#)

**Cytogenetics:** 4p16.3

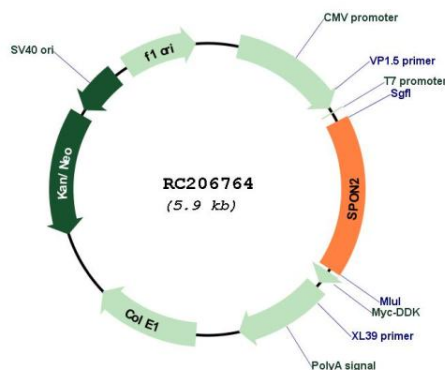
**Domains:** tsp\_1

**Protein Families:** Secreted Protein

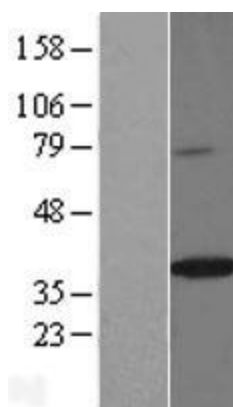
**MW:** 35.6 kDa

**Gene Summary:** Cell adhesion protein that promotes adhesion and outgrowth of hippocampal embryonic neurons. Binds directly to bacteria and their components and functions as an opsonin for macrophage phagocytosis of bacteria. Essential in the initiation of the innate immune response and represents a unique pattern-recognition molecule in the ECM for microbial pathogens (By similarity). Binds bacterial lipopolysaccharide (LPS).[UniProtKB/Swiss-Prot Function]

### Product images:



Circular map for RC206764



Western blot validation of overexpression lysate (Cat# [LY426949]) using anti-DDK antibody (Cat# [TA50011-100]). Left: Cell lysates from untransfected HEK293T cells; Right: Cell lysates from HEK293T cells transfected with [RC225482] using transfection reagent MegaTran 2.0 (Cat# [TT210002]).