

Product datasheet for **RC206763**

AMDHD1 (NM_152435) Human Tagged ORF Clone

Product data:

Product Type:	Expression Plasmids
Product Name:	AMDHD1 (NM_152435) Human Tagged ORF Clone
Tag:	Myc-DDK
Symbol:	AMDHD1
Synonyms:	HMFT1272
Mammalian Cell Selection:	Neomycin
Vector:	pCMV6-Entry (PS100001)
E. coli Selection:	Kanamycin (25 ug/mL)



[View online »](#)

ORF Nucleotide
Sequence:

>RC206763 ORF sequence
Red=Cloning site Blue=ORF Green=Tags(s)

TTTTGTAATACGACTCACTATAGGGCGGCCGGGAATTCGTCGACTGGATCCGGTACCGAGGAGATCTGCC
GCCGCGATCGCC

ATGGCAGGCGGCCACAGCCTCTGCTGGAGAACGCGCAGCAAGTGGTGTGGTGTGCGCCCGCGGCGAGC
GCTTCTGGCGCGGGATGCGCTGCGCAGCCTGGCGGTGCTGGAAGCGCCAGTCTGGTGGTGGGCAAAGA
TGGATTTATAAAGCTATTGGTCTGCTGATGTTATTCAAAGACAGTTTTCTGGAGAAACTTTGAAGAA
ATAATTGACTGCTCTGGGAAATGTATCCTACCAGTTTGGTGGATGCACACACACATCCAGTATGGGCTG
GTGAAAGAGTTACGAAATTTGCAATGAAGTTGGCAGGAGCCACCTACATGGAAATTCACCAGGCCGAGG
AGGGATCCACTTTACCGTGGAGCGCACGCGCAAGCCACAGAGGAGGAGCTGTTCCGCTCCTTGACGAA
CGGCTCCAGTGCATGATGAGGGCTGGCACCACGCTGGTGGAGTGAAGAGTGGATATGGCCTCGACCTGG
AGACCGAGCTCAAGATGCTGCGCGTATTGAGCGCGCCCGCGGGAGCTGGACATCGGCATCTCGGCTAC
CTACTGCGGGGCTCATTCACTGCCTAAAGGAAAACTGCTACTGAAGCTGCTGATGACATCATCAATAAC
CACCTCCCAAAGCTGAAGGAACTTGGCAGAAATGGGAAATACACGTGGACAATATAGACGTATTTGTG
AGAAAGGTGTCTTTGATCTCGATTCCACCAAGAAGGATTCTTCAACGTGGAAAAGATATAGGGTTACAGAT
TAACCTCCATGGGGATGAACTCCACCCGATGAAGGCTGCTGAGCTTGGGCTGAACTGGGAGCGCAGGCA
ATCAGCCACCTGGAAGAAGTGAAGTGAAGGCATCGTTGCCATGGCAACGGCCAGGTGCTCGCCATCC
TTCTGCCACCACAGCCTACATGCTGAGACTGAAACAACCTCGAGCCAGGAAGATGTTAGATGAAGGAGT
AATAGTTGCTCTGGGAAGTATTCAACCCCAATGCATATTGCTTTTCAATGCCAATGGTCATGCATCTG
GCCTGTGTAACATGAGAATGTCCATGCCTGAGGCCTGGCCGCTGCCACCATCAATGCAGCTTATGCAC
TGGGAAAGTCTCACACACAGGATCGTTGGAAGTTGGCAAACAGGGAGATCTCATTATCATCAATTCATC
CCGATGGGAGCATTTGATTTACCAGTTCGGAGGCCATCATGAATTAATTGAATATGTTATAGCTAAAGGA
AAACTCATCTATAAAACA

ACGCGTACGCGCGCGCTCGAGCAGAACTCATCTCAGAAGAGGATCTGGCAGCAAATGATATCCTGGATT
ACAAGGATGACGACGATAAGGTTTAA

Protein Sequence:

>RC206763 protein sequence
Red=Cloning site Green=Tags(s)

MAGGHSLLLENAQQVVLVCARGERFLARDALRSLAVLEGASLVVGKDFIKAIGPADVIQRQFSGETFEE
IIDCSGKCILPGLVDAHHPVWAGERVHEFAMKLAGATYMEIHQAGGGIHFIVERTRQATEEELFRSLQQ
RLQCMRAGTTLVECKSGYGLDLETELKMLRVIERARRELDIGISATYCGAHSVPKGTATEAADDIINN
HLPKLELGRNGEIHVDNIDVFCEKGVFDLDSTRRLQRGKDIGLQINFHGDDELHPMKAELGAELGAQA
ISHLEEVSDGIVAMATARCSAILLPTTAYMLRLKQPRARKMLDEGVIVALGSDFPNPAYCF SMPMVMHL
ACVNM RMSPEALAAATINAAYALGKSHTHGSLEVGKQGDLLIINSSRWEHLIYQFGGHELIIEYVIAKG
KLIYKT

TRTRPLEQKLISEEDLAANDILDYKDDDDKV

Chromatograms:

https://cdn.origene.com/chromatograms/mk6329_h03.zip

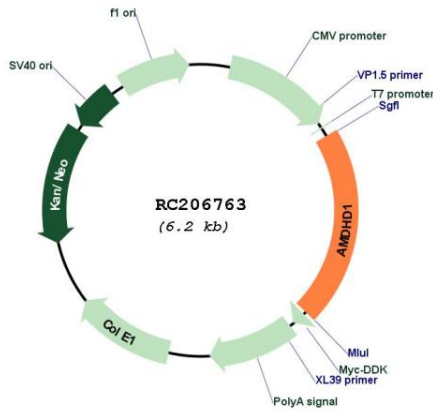
Restriction Sites:

Sgfl-Mlul

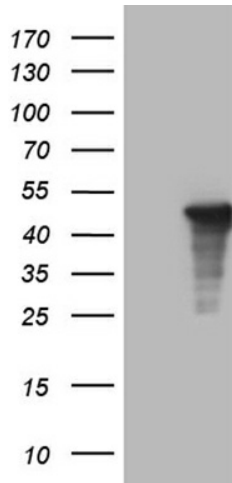
Protein Pathways: Histidine metabolism, Metabolic pathways

MW: 46.7 kDa

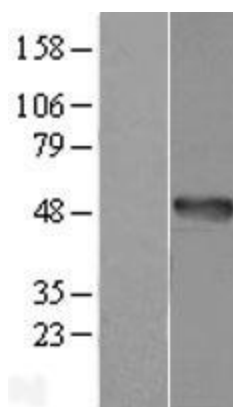
Product images:



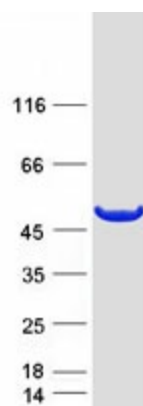
Circular map for RC206763



HEK293T cells were transfected with the pCMV6-ENTRY control (Cat# [PS100001], Left lane) or pCMV6-ENTRY AMDHD1 (Cat# RC206763, Right lane) cDNA for 48 hrs and lysed. Equivalent amounts of cell lysates (5 ug per lane) were separated by SDS-PAGE and immunoblotted with anti-AMDHD1 (Cat# [TA809949])(1:2000). Positive lysates [LY407536] (100ug) and [LC407536] (20ug) can be purchased separately from OriGene.



Western blot validation of overexpression lysate (Cat# [LY407536]) using anti-DDK antibody (Cat# [TA50011-100]). Left: Cell lysates from untransfected HEK293T cells; Right: Cell lysates from HEK293T cells transfected with RC206763 using transfection reagent MegaTran 2.0 (Cat# [TT210002]).



Coomassie blue staining of purified AMDHD1 protein (Cat# [TP306763]). The protein was produced from HEK293T cells transfected with AMDHD1 cDNA clone (Cat# RC206763) using MegaTran 2.0 (Cat# [TT210002]).