

Product datasheet for **RC206762**

GABARAPL1 (NM_031412) Human Tagged ORF Clone

Product data:

Product Type: Expression Plasmids
Product Name: GABARAPL1 (NM_031412) Human Tagged ORF Clone
Tag: Myc-DDK
Symbol: GABARAPL1
Synonyms: APG8-LIKE; APG8L; ATG8; ATG8B; ATG8L; GEC1
Mammalian Cell Selection: Neomycin
Vector: pCMV6-Entry (PS100001)
E. coli Selection: Kanamycin (25 ug/mL)
ORF Nucleotide Sequence: >RC206762 ORF sequence
Red=Cloning site Blue=ORF Green=Tags(s)

TTTTGTAATACGACTCACTATAGGGCGCCGGGAATTCGTCGACTGGATCCGGTACCGAGGAGATCTGCC
GCC**CGATCGCC**

ATGAAGTTCAGTACAAGGAGGACCATCCCTTTGAGTATCGGAAAAGGAAGGAGAAAAGATCCGGAAGA
AATATCCGGACAGGGTCCCCGTGATTGTAGAGAAGGCTCCAAAAGCCAGGGTGCCTGATCTGGACAAGAG
GAAGTACCTAGTCCCTCTGACCTTACTGTTGGCCAGTTCTACTTCTTAATCCGGAAGAGAATCCACCTG
AGACCTGAGGACGCCTTATTCTTTGTCAACAACACCATCCCTCCCACAGTGCTACCATGGCCAAC
TGTATGAGGACAATCATGAGGAAGACTATTTTCTGTATGTGGCTACAGTGATGAGAGTGTCTATGGAA
A

ACGCGTACGCGGCCGCTCGAGCAGAACTCATCTCAGAAGAGGATCTGGCAGCAAATGATATCCTGGATT
ACAAGGATGACGACGATAAGGTTTAA

Protein Sequence: >RC206762 protein sequence
Red=Cloning site Green=Tags(s)
MKFQYKEDHPFEYRKKEGKIRKKYPDRVPVIVEKAPKARVPDLDRKYLVPSDLTVGQFYFLIRKRIHL
RPEDALFFVNNIPPTSATMGQLYEDNHEEDYFLYVAYSDESIVYVK

TRTRPLEQKLISEEDLAANDILDYKDDDDKV

Chromatograms: https://cdn.origene.com/chromatograms/mk6016_g01.zip

Restriction Sites: Sgfl-Mlul



[View online »](#)

Cloning Scheme:


ACCN: NM_031412

ORF Size: 351 bp

OTI Disclaimer: The molecular sequence of this clone aligns with the gene accession number as a point of reference only. However, individual transcript sequences of the same gene can differ through naturally occurring variations (e.g. polymorphisms), each with its own valid existence. This clone is substantially in agreement with the reference, but a complete review of all prevailing variants is recommended prior to use. [More info](#)

OTI Annotation: This clone was engineered to express the complete ORF with an expression tag. Expression varies depending on the nature of the gene.

Components: The ORF clone is ion-exchange column purified and shipped in a 2D barcoded Matrix tube containing 10ug of transfection-ready, dried plasmid DNA (reconstitute with 100 ul of water).

- Reconstitution Method:**
1. Centrifuge at 5,000xg for 5min.
 2. Carefully open the tube and add 100ul of sterile water to dissolve the DNA.
 3. Close the tube and incubate for 10 minutes at room temperature.
 4. Briefly vortex the tube and then do a quick spin (less than 5000xg) to concentrate the liquid at the bottom.
 5. Store the suspended plasmid at -20°C. The DNA is stable for at least one year from date of shipping when stored at -20°C.

Note: Plasmids are not sterile. For experiments where strict sterility is required, filtration with 0.22um filter is required.

RefSeq: [NM_031412.4](#)

RefSeq Size: 1885 bp

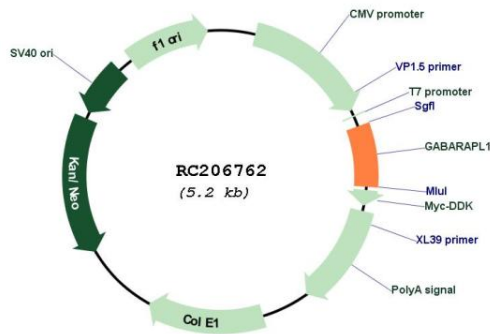
RefSeq ORF: 354 bp

Locus ID: 23710
 UniProt ID: [Q9H0R8](#)
 Cytogenetics: 12p13.2

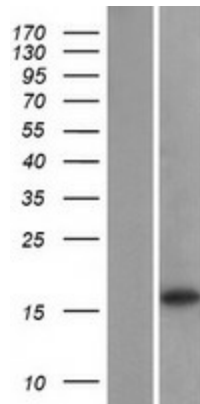
Domains: MAP1_LC3
 Protein Pathways: Regulation of autophagy
 MW: 14 kDa

Gene Summary: Ubiquitin-like modifier that increases cell-surface expression of kappa-type opioid receptor through facilitating anterograde intracellular trafficking of the receptor. Involved in formation of autophagosomal vacuoles. Whereas LC3s are involved in elongation of the phagophore membrane, the GABARAP/GATE-16 subfamily is essential for a later stage in autophagosome maturation.[UniProtKB/Swiss-Prot Function]

Product images:



Circular map for RC206762



Western blot validation of overexpression lysate (Cat# [LY403111]) using anti-DDK antibody (Cat# [TA50011-100]). Left: Cell lysates from untransfected HEK293T cells; Right: Cell lysates from HEK293T cells transfected with RC206762 using transfection reagent MegaTran 2.0 (Cat# [TT210002]).