

Product datasheet for RC206750

MCM9 (NM_153255) Human Tagged ORF Clone

Product data:

Product Type:	Expression Plasmids
Product Name:	MCM9 (NM_153255) Human Tagged ORF Clone
Tag:	Myc-DDK
Symbol:	MCM9
Synonyms:	C6orf61; dj329L24.1; dj329L24.3; MCMDC1; ODG4
Mammalian Cell Selection:	Neomycin
Vector:	pCMV6-Entry (PS100001)
E. coli Selection:	Kanamycin (25 ug/mL)
ORF Nucleotide Sequence:	>RC206750 ORF sequence Red=Cloning site Blue=ORF Green=Tags(s)

TTTTGTAATACGACTCACTATAGGGCGCCGGGAATTCGTCGACTGGATCCGGTACCGAGGAGATCTGCCGCCGCGATCGCC

ATGAATAGCGATCAAGTTACACTGGTTGGTCAAGTGTGGAGTCATATGTTTCGGAATACCATAAGAATGATATTCTTCTAATCTTGAAGGAAAGGGATGAAGATGCTCATTACCCAGTTGTGGTAAATGCCATGACTCTGTTTGAGACCAACATGGAATCGGGGAATTTTCAACATGTTCCCGAGTGAAGTGCTTACAATTTTTGATAGTGCCTGCGAAGGTCAGCCTTGACAATCTCCAGTCCCTTTCTCAGCCTGAGGCTGTTTCCATGAAACAGAATCTTCATGCCAGGATATCAGTTTTGCCTGTCTGTCTGAGCTGGTGAAGGAAACACATACCTAAAACAAGGATGTGGGACACTTTTTATCTGTCAGTGGACAGTATTGCAACAAGTCTGGTGAAGGTTCTGGGTTTGAGCGGGATTACATGTGTAACAATGCAAGCATGTGTTTGTGATCAAGGCTGACTTTGAGCAGTATTACACCTTTTCCGGCCATCCTCGTGTCCAGCTTGGAGAGCTGTGATTCTCTAAATTCACTTGCCTCTCAGGCTTGTCTTCACTCCAACCAGGTGTAGAGATTACCAGGAAATCAAAATTCAGGAACAGGTTCAAAGCTATCTGTTGGAAGTATCCACGATCTATGAAGTTATTCTGGAAGTACTTAGTGATAGTTGCAAACTGGTGATGACCTCACTATTTACGGGATTGTAATGCAACGGTGAAGCCCTTTCAGCAAGATGTGCGCTGTGAAGTGGAGATAGTCTGAAAGCAAATACATCCAAGTAAATAATGAGCAGTCCCTCAGGGATCATCATGATGAGGAGGTCCAAAAGGAATTCGAAGTTTTGGGAATACTATAAGAGCGTCCCTTTCAGGAAGGATGTAATATTGGCTAGCTTGTCCCTCAAGTGTGGAAATGATCTAGTAAAGCTTGTGTGGCCATGTTGCTGGCTGGTGGGATTCAAAGGACTGATGCTACAGGAACACGGGTGAGAGGAGAATCTCATCTTTTATTGGTTGGGATCCTGGCACAGGAAATCTCAGTTCCTCAAATATGCAGCAAAGATTACACCAAGATCTGTGTGACCACAGGAATTGGATCTACTAGTGCAGGATTGTATGTGACAATTTCAAG

AGCGGACCGACGCGTACGCGGCCGCTCGAGCAGAACTCATCTCAGAAGAGGATCTGGCAGCAAATGATATCC
TGGATTACAAGGATGACGACGATAAGGTTTAA



[View online »](#)

Protein Sequence: >RC206750 protein sequence
Red=Cloning site Green=Tags(s)

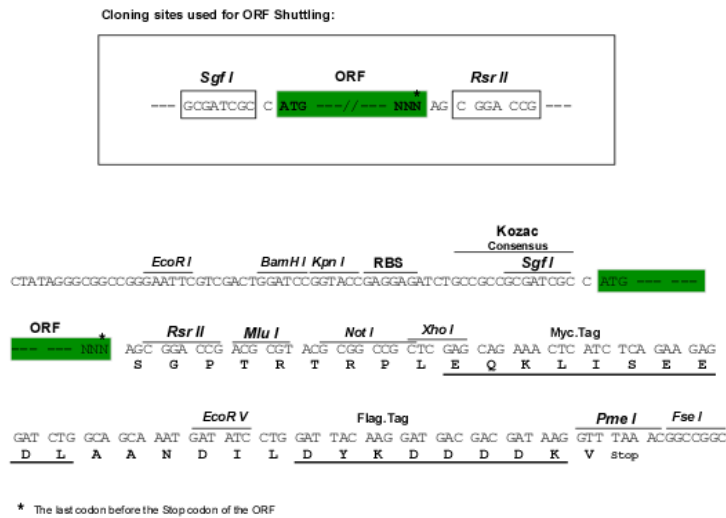
MNSDQVTLVGQVFESYVSEYHKNDILLILKERDEDAHYPVVVNAMTLFETNMEIGEYFNMFPSEVLTIIFD
 SALRRSALTILQSLSQPEAVSMKQNLHARISGLPVCPELVREHVPKTKDVGHFLSVTGTVIRTSLVKVLE
 FERDYMCNKCKHVFVIKADFEQYYTFCRPSSCPSLESCDSSKFCTLSGLSSSPTRCRDYQEIKIQEQVQR
 LSVGSIIPRSMKVILEDLVDSCSGDDLTIYGIVMQRWPFQDVRCEVEIVLKANYIQVNNEQSSGIIM
 DEEVQKEFEDFWEYYKSDPFAGRNVILASLCPQVFGMYLVKLAVAMVLAGGIQRDTATGTRVRGESHLLL
 VGDPGTGKSQFLKYAAKITPRSVLTTGIGSTSAGIVCDNFK

SGPTRTRPLEQKLI SEEDLAANDILDYKDDDDKV

Chromatograms: https://cdn.origene.com/chromatograms/mk6619_c01.zip

Restriction Sites: SgfI-RsrII

Cloning Scheme:



ACCN: NM_153255

ORF Size: 1173 bp

OTI Disclaimer: The molecular sequence of this clone aligns with the gene accession number as a point of reference only. However, individual transcript sequences of the same gene can differ through naturally occurring variations (e.g. polymorphisms), each with its own valid existence. This clone is substantially in agreement with the reference, but a complete review of all prevailing variants is recommended prior to use. [More info](#)

OTI Annotation: This clone was engineered to express the complete ORF with an expression tag. Expression varies depending on the nature of the gene.

Components: The ORF clone is ion-exchange column purified and shipped in a 2D barcoded Matrix tube containing 10ug of transfection-ready, dried plasmid DNA (reconstitute with 100 ul of water).

Reconstitution Method:

1. Centrifuge at 5,000xg for 5min.
2. Carefully open the tube and add 100ul of sterile water to dissolve the DNA.
3. Close the tube and incubate for 10 minutes at room temperature.
4. Briefly vortex the tube and then do a quick spin (less than 5000xg) to concentrate the liquid at the bottom.
5. Store the suspended plasmid at -20°C. The DNA is stable for at least one year from date of shipping when stored at -20°C.

RefSeq: [NM_153255.1](#)

RefSeq Size: 2507 bp

RefSeq ORF: 1176 bp

Locus ID: 254394

UniProt ID: [Q9NXL9](#)

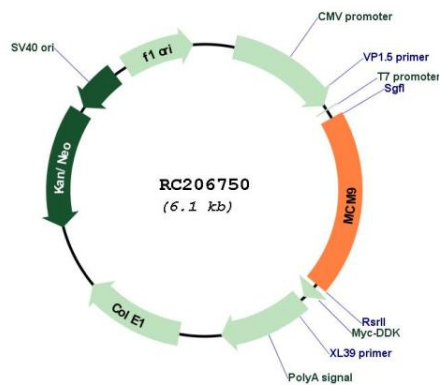
Cytogenetics: 6q22.31

Domains: MCM

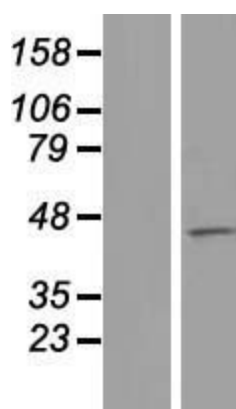
MW: 44 kDa

Gene Summary: The protein encoded by this gene is a member of the mini-chromosome maintenance (MCM) protein family that are essential for the initiation of eukaryotic genome replication. Binding of this protein to chromatin has been shown to be a pre-requisite for recruiting the MCM2-7 helicase to DNA replication origins. This protein also binds, and is a positive regulator of, the chromatin licensing and DNA replication factor 1, CDT1. [provided by RefSeq, Nov 2010]

Product images:



Circular map for RC206750



Western blot validation of overexpression lysate (Cat# [LY407170]) using anti-DDK antibody (Cat# [TA50011-100]). Left: Cell lysates from untransfected HEK293T cells; Right: Cell lysates from HEK293T cells transfected with RC206750 using transfection reagent MegaTran 2.0 (Cat# [TT210002]).