

## Product datasheet for **RC206747**

### MS4A15 (NM\_152717) Human Tagged ORF Clone

#### Product data:

**Product Type:** Expression Plasmids  
**Product Name:** MS4A15 (NM\_152717) Human Tagged ORF Clone  
**Tag:** Myc-DDK  
**Symbol:** MS4A15  
**Mammalian Cell Selection:** Neomycin  
**Vector:** pCMV6-Entry (PS100001)  
**E. coli Selection:** Kanamycin (25 ug/mL)  
**ORF Nucleotide Sequence:** >RC206747 ORF sequence  
Red=Cloning site Blue=ORF Green=Tags(s)

TTTTGTAATACGACTCACTATAGGGCGGCCGGAATTCGTCGACTGGATCCGGTACCGAGGAGATCTGCC  
GCC**CGATCGCC**

ATGGTTCGCCGCGGCCACGTGGGCATCTTCTTCATCGAGGGCGCGTCCCCTTCTGGGGAGGAGCCTGCT  
TCATCATCTCCGGATCCCTCTCAGTGGCAGCCGAGAAGAACCACACAGTTGCCTGGTGAGGAGCAGCCT  
GGGCACCAACATCCTCAGCGTCATGGCGGCCTTTGCTGGGACAGCCATTCTGCTCATGGATTTTGGTGTT  
ACCAACCGGGATGTGGACAGGGGCTATCTGGCCGTGCTTACTATCTTCACTGTCTGGAGTCTTCCACAG  
CGGTCAATTGCCATGCACCTCGGGTGCCAAGCCATCCATGCCAGGCCAGTGCACCTGTGATCTTCTGCC  
AAACGCCTTCAGCGCAGACTTCAACATCCCAGCCCGGCAGCCTCTGCGCCCCCTGCCTATGACAATGTG  
GCATATGCCCAAGGAGTCGTC

**ACGCGT**ACGCGGCCGCTCGAGCAGAACTCATCTCAGAAGAGGATCTGGCAGCAAATGATATCCTGGATT  
ACAAGGATGACGACGATAAGGTTTAA

**Protein Sequence:** >RC206747 protein sequence  
Red=Cloning site Green=Tags(s)

MVRRGHVGIFFIEGGVFPWGGACFIISGSLSVAAEKNHTSCLVRSSLGTNLSVMAAFAGT AILLMDFGV  
TNRDVRGYLAVLTIFTVLEFFTA VIAMHFGCQAIHAQASAPVIFLPNAFSADFNIPSPAASAPPAYDYN  
AYAQGVV

**TR**TRPLEQKLISEEDLAANDILDYKDDDDKV

**Chromatograms:** [https://cdn.origene.com/chromatograms/mk6332\\_a12.zip](https://cdn.origene.com/chromatograms/mk6332_a12.zip)

**Restriction Sites:** SgfI-MluI



[View online >](#)

**Cloning Scheme:**


**ACCN:** NM\_152717

**ORF Size:** 441 bp

**OTI Disclaimer:** The molecular sequence of this clone aligns with the gene accession number as a point of reference only. However, individual transcript sequences of the same gene can differ through naturally occurring variations (e.g. polymorphisms), each with its own valid existence. This clone is substantially in agreement with the reference, but a complete review of all prevailing variants is recommended prior to use. [More info](#)

**OTI Annotation:** This clone was engineered to express the complete ORF with an expression tag. Expression varies depending on the nature of the gene.

**Components:** The ORF clone is ion-exchange column purified and shipped in a 2D barcoded Matrix tube containing 10ug of transfection-ready, dried plasmid DNA (reconstitute with 100 ul of water).

- Reconstitution Method:**
1. Centrifuge at 5,000xg for 5min.
  2. Carefully open the tube and add 100ul of sterile water to dissolve the DNA.
  3. Close the tube and incubate for 10 minutes at room temperature.
  4. Briefly vortex the tube and then do a quick spin (less than 5000xg) to concentrate the liquid at the bottom.
  5. Store the suspended plasmid at -20°C. The DNA is stable for at least one year from date of shipping when stored at -20°C.

**RefSeq:** [NM\\_152717.3](#)

**RefSeq Size:** 1693 bp

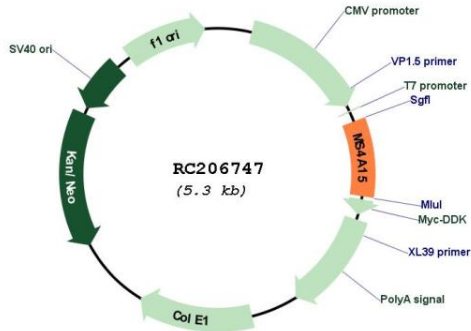
**RefSeq ORF:** 444 bp

**Locus ID:** 219995

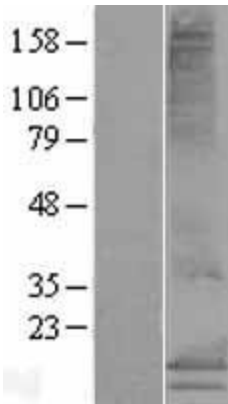
**UniProt ID:** [Q8N5U1](#)

**Cytogenetics:** 11q12.2  
**Protein Families:** Druggable Genome, Transmembrane  
**MW:** 15.4 kDa  
**Gene Summary:** May be involved in signal transduction as a component of a multimeric receptor complex. [UniProtKB/Swiss-Prot Function]

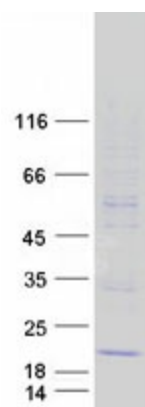
**Product images:**



Circular map for RC206747



Western blot validation of overexpression lysate (Cat# [LY407337]) using anti-DDK antibody (Cat# [TA50011-100]). Left: Cell lysates from untransfected HEK293T cells; Right: Cell lysates from HEK293T cells transfected with RC206747 using transfection reagent MegaTran 2.0 (Cat# [TT210002]).



Coomassie blue staining of purified MS4A15 protein (Cat# [TP306747]). The protein was produced from HEK293T cells transfected with MS4A15 cDNA clone (Cat# RC206747) using MegaTran 2.0 (Cat# [TT210002]).