

## Product datasheet for **RC206743**

### CCDC17 (NM\_152500) Human Tagged ORF Clone

#### Product data:

Product Type:	Expression Plasmids
Product Name:	CCDC17 (NM_152500) Human Tagged ORF Clone
Tag:	Myc-DDK
Symbol:	CCDC17
Synonyms:	coiled-coil domain containing 17; FLJ17921; FLJ33084; FLJ33084, RP4-697E16.4; OTTHUMP00000009506
Mammalian Cell Selection:	Neomycin
Vector:	pCMV6-Entry (PS100001)
E. coli Selection:	Kanamycin (25 ug/mL)



[View online »](#)

**ORF Nucleotide Sequence:**

>RC206743 ORF sequence  
 Red=Cloning site Blue=ORF Green=Tags(s)

TTTTGTAATACGACTCACTATAGGGCGGCCGGAATTCGTCGACTGGATCCGGTACCGAGGAGATCTGCC  
 GCC**CGGATCGCC**

ATGTCCCCTCTTCGGCTGGAGCAGGAGATTGAGAACAAGCTGAGGCCGGGAGGACCGGGGGAG  
 CTCTAGAGGTGTTGGGGCCCGCATTAGGAGCTGCAGGCGGAGCCAGGGAACCCGCTGAGCTCCCGCG  
 AGAGGCAGAACTTTATTCTCCAGTGCAAAAGGCCAACCCGGGAATCTGGCTGCCGAAATCCGGGCGCTG  
 CGGGAGGCTACATTCGAGACGGGGGCCGGGACCCCGCGTGTGGCCAGATATGGCAGTTGCAGGTGG  
 AGGCGTCTGACTGGAGCTGCAGCGGTGCAGACCCGAGAGGAAGGCAGGTGCCACCTCAGGGGAGCT  
 TCCAGTAGTGAGGCTGAAAACCGCGCTTGGAGGCAGAAATCTTGGCCTTGCAATGCAGAGGGGTCGG  
 GCACCTTGGGGCCCAGGATCTGCGACTCTGGGGGATGCCAGCCTACAACCGAAGGGGAGGAGATC  
 CCCCCTCTCCCGCCACCGGTGGCACCACCGTGCACCACTTCCAGGCTTCTCGGAGCCACAGCTTCC  
 TGGAAACAATGACCAGAACTGGGCTGGACTCACACTTCTCTGCCACATCGGACATGCTGGGCCCT  
 GCACCTATGATCTGGGGCTGGCTGGTCATTTCTATGATTTCTGCGGGCCTTGAGGCTTCTTGGA  
 TTTGGGTGCAAGAAAGGACGGCCTCCGCGCATGCCGCACGGGATACAGGAAGGACCACAGCGTTGCCCC  
 AGCCCTTTTCTGCCCCACCTCTGCTCCCGGGCCATGAGCAACTGTGCCATCCTTGCCAGCAGGCGAG  
 CCTGTGCCAGACTACCACCTCATCATCAGTATCTTTGGTCTGTGAGCTGCAGGTCTGGCAGGGGCTAG  
 CATGGGCTAGGGCACCACAGCCAAAGGCTTGGGTCTCACTTGGACTATTTGACCAAGATCAGCGGGTGT  
 AAGTGGCCGCTGGCGCCTCCACTTCGGGCCCTTCTCTGGACCCAGCCTTAGCCTTGGGCAGCTGAAT  
 GGGATTCCTCAGGCAGGTGAGCTGAGCTTTCTGCGGCTGGTGAATGCAAGAGATGCAGCTGTACAGA  
 CACTGGCAGAGATCAATCCAGCAAGTGCATGAGTACCAGTACCACCTCCGGTGTCCAGCACATCTTC  
 ACTGGAAGCCAGCTTCTCACCCCGCAGTTGGCTTTGCTGATCCCCACCTCGTACAGAAGAGCCCTC  
 AGTGGAGTCAAGGATAGAGATGAGGTTTGGGCCCTACCACAGTTTTGACTTGCCCCAGTGAGTTTC

**ACGCGT**ACGCGGCCGCTCGAGCAGAACTCATCTCAGAAGAGGATCTGGCAGCAATGATATCTGGATT  
 ACAAGGATGACGACGATAAGGTTTAA

**Protein Sequence:**

>RC206743 protein sequence  
 Red=Cloning site Green=Tags(s)

MSRLFGLQEIQEIRELQAEAGRTRGALEVLGARIQELQAEKGNPLSSRREAELYSVPQKANPGTLAAEIRAL  
 REAYIRDGGRDPVGLGQIWQLQVEASALELQRSQTRRGRAGATSGELPVVEAENRRLEAEILALQMQRGR  
 APLGPQDLRLLDASLQPKGRRDPPLLPPVAPPLPPLPGFSEPQLPGTMTRNLGLDSHFLLPSSDMLGP  
 APYDPGAGLVIFYDFLRGLEASWIWVQERTASAHAAARDTGRTTALPPALFLPPPPAPGPMNSCAILASRQ  
 PVPRLPPSSSVSLVCELQVWQGLAWARAPQPKAWVSLGLFDQDQRVLSGRWRLPLRALPLDPSLSLQQLN  
 GIPQAGQAEFLRLVNARDAAVQTLAEINPASVHEYQYPPPVSSSTSSLEASFLTPAVGFADPPPRTEEPL  
 SGVKDRDEGLGPHHSFDLPPVSF

**TRTRPLEQKLI**SEEDLAANDILDYKDDDDKV

**Chromatograms:**

[https://cdn.origene.com/chromatograms/mk6670\\_d05.zip](https://cdn.origene.com/chromatograms/mk6670_d05.zip)

**Restriction Sites:**

Sgfl-Mlul

**Cloning Scheme:**


**ACCN:** NM\_152500

**ORF Size:** 1329 bp

**OTI Disclaimer:** The molecular sequence of this clone aligns with the gene accession number as a point of reference only. However, individual transcript sequences of the same gene can differ through naturally occurring variations (e.g. polymorphisms), each with its own valid existence. This clone is substantially in agreement with the reference, but a complete review of all prevailing variants is recommended prior to use. [More info](#)

**OTI Annotation:** This clone was engineered to express the complete ORF with an expression tag. Expression varies depending on the nature of the gene.

**Components:** The ORF clone is ion-exchange column purified and shipped in a 2D barcoded Matrix tube containing 10ug of transfection-ready, dried plasmid DNA (reconstitute with 100 ul of water).

- Reconstitution Method:**
1. Centrifuge at 5,000xg for 5min.
  2. Carefully open the tube and add 100ul of sterile water to dissolve the DNA.
  3. Close the tube and incubate for 10 minutes at room temperature.
  4. Briefly vortex the tube and then do a quick spin (less than 5000xg) to concentrate the liquid at the bottom.
  5. Store the suspended plasmid at -20°C. The DNA is stable for at least one year from date of shipping when stored at -20°C.

**Note:** Plasmids are not sterile. For experiments where strict sterility is required, filtration with 0.22um filter is required.

**RefSeq:** [NM\\_152500.2](#), [NP\\_689713.2](#)

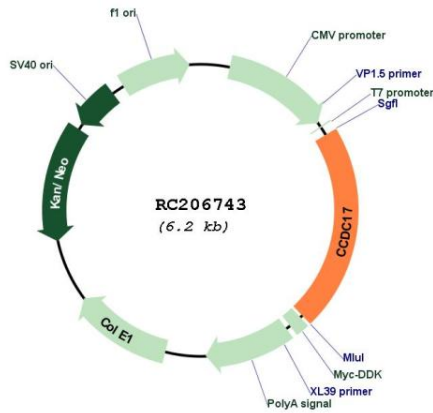
**RefSeq Size:** 1914 bp

**RefSeq ORF:** 1331 bp

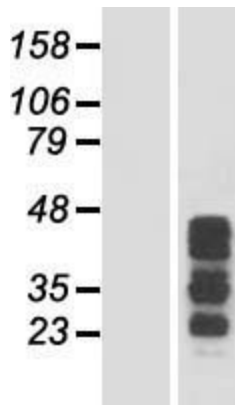
**Locus ID:** 149483

Cytogenetics: 1p34.1  
 MW: 47.9 kDa

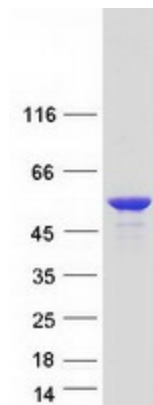
**Product images:**



Circular map for RC206743



Western blot validation of overexpression lysate (Cat# [LY407506]) using anti-DDK antibody (Cat# [TA50011-100]). Left: Cell lysates from untransfected HEK293T cells; Right: Cell lysates from HEK293T cells transfected with RC206743 using transfection reagent MegaTran 2.0 (Cat# [TT210002]).



Coomassie blue staining of purified CCDC17 protein (Cat# [TP306743]). The protein was produced from HEK293T cells transfected with CCDC17 cDNA clone (Cat# RC206743) using MegaTran 2.0 (Cat# [TT210002]).