

Product datasheet for **RC206740**

HID1 (NM_030630) Human Tagged ORF Clone

Product data:

Product Type:	Expression Plasmids
Product Name:	HID1 (NM_030630) Human Tagged ORF Clone
Tag:	Myc-DDK
Symbol:	HID1
Synonyms:	17orf28; C17orf28; DMC1; HID-1
Mammalian Cell Selection:	Neomycin
Vector:	pCMV6-Entry (PS100001)
E. coli Selection:	Kanamycin (25 ug/mL)



[View online »](#)

ORF Nucleotide Sequence:

>RC206740 ORF sequence
 Red=Cloning site Blue=ORF Green=Tags(s)

TTTTGTAATACGACTCACTATAGGGCGGCCGGGAATTCGTCGACTGGATCCGGTACCGAGGAGATCTGCC
 GCC**CGCATCGCC**

ATGGGGTCGACCGACTCCAAGCTGAACTCCGGAAGGCGGTGATCCAGCTCACCACCAAGACGCAGCCCC
 TGGAAGCCACCGATGATGCCTTTTGGGACCAGTTCTGGGCAGACACAGCCACCTCGGTGCAGGATGTGTT
 TGCACTGGTGCCCGCAGCAGAGATCCGGGCCGTGCGGGAAGAGTACCCTCCAACCTGGCCACCCTGTGC
 TACAAGGCCGTTGAGAAGCTGGTGCAGGGAGCTGAGAGTGGCTGCCACTCGGAGAAGGAGAAGCAGATCG
 TCCTGAACTGCAGCCGGCTGCTCACCCGCTGCTGCCCTACATCTTTGAGGACCCCGACTGGAGGGGCTT
 CTTCTGGTCCACAGTGCCCGGGCAGGGCAGGAGGGCAGGGAGAAGAGGATGATGAGCATGCCAGGCC
 CTGGCCGAGTCCCTGCTCCTGGCATTGCTGACCTGCTCTTCTGCCCGGACTTACAGGTTACAGGCCACC
 GGAGGAGCACTGTGGACTCGGCAGAGGACGTCCACTCCCTGGACAGCTGTGAATACATCTGGGAGGCTGG
 TGTGGGCTTCGCTCACTCCCCCAGCCTAACTACATCCACGATATGAACCGGATGGAGCTGCTGAACTG
 CTGCTGACATGCTTCTCCGAGGCCATGTACCTGCCCCAGCTCCGAAAGTGGCAGCACCAACCCATGGG
 TTCAGTCTTTTGTCCACGGAGAACAGACATGCCCTGCCCTCTTACCTCCCTCCTCAACACCCGTGTG
 TGCCATGACCCTGTGGGCTACGGGATCCCTACAACCACCTGCTCTTCTGACTACCGGGAACCCCTG
 GTGGAGGAGGCTGCCAGGTGCTATTGTCACTTTGGACCACGACAGTCCAGCAGTCCAGCCCACTG
 TGGACGGCACCACCCTGGCACCGCCATGGATGATGCCGATCCTCCAGGCCCTGAGAACCTGTTTGTGAA
 CTACCTGTCCCGCATCCATCGTGAGGAGGACTTCCAGTTCATCCTCAAGGGTATAGCCCGGCTGCTGTCC
 AACCCCTGCTCCAGACCTACCTGCCTAACTCCACCAAGAAGATCCAGTCCACCAGGAGCTGCTAGTTC
 TCTTCTGGAAGCTCTGCGACTTCAACAAGAAATTCCTCTTCTTCTGCTGAAGAGCAGCGACGTCATGA
 CATCCTTGTCCCATCCTCTTCTTCTCAACGATGCCCGGCCGATCAGTCTCGGGTGGGCTGATGCAC
 ATTGGTGTCTTACTTCTGCTGCTTCTGAGCGGGAGCGGAACTTCGGGGTGCAGGGAACCAACCCACT
 CAATCCGCGTGCCATGGACATCCAGTCTTACAGGGACCCACGCCGACCTGCTCATTGTGGTGTCCAA
 CAAGATCATCACCAGCGGCCACCAGCGTTGCAGCCCCTCTTCTGACTGCCTGCTCACCATCGTGGTCAAC
 GTGTCCCCTACCTCAAGAGCCTGTCCATGGTGACCGCCAACAAGTTGCTGCACCTGCTGGAGGCCCTTCT
 CCACCACCTGGTCTCTTCTGCGCCGAGAACCCACCTGGTCTTCTTCTCCTGGAGGTCTTCAA
 CAACATCATCCAGTACCAGTTTGTGGCACTCCAACCTGGTCTACGCCATCATCCGCAAGCGCAGCATC
 TTCACCAGCTGGCCAACCTGCCACGGACCCGCCACCATTACAAGGCCCTGCAGCGGCGCCGGCGGA
 CACCTGAGCCCTTGTCTCGCACCAGGCTCCAGGAGGGCACCTCCATGGAGGGCTCCCGCCCGCTGCCCC
 TGCAGAGCCAGGCACCCTCAAGACCAGTCTGGTGGCTACTCCAGGCATTGACAAGCTGACCGAGAAGTCC
 CAGGTGTGAGAGGATGGCACCTTGCAGTCCCTGGAACCTGAGCCCCAGCAGAGCTTGAGGATGGCAGCC
 CGGCTAAGGGGGAGCCCAGCCAGGCATGGAGGGAGCAGCGGCGACCGTCCACCTCATCAGCCAGTGGGCA
 GTGGAGCCCAACGCCAGAGTGGGTCTCTCTGGAAGTCGAAGCTGCCGCTGCAGACCATCATGAGGCTG
 CTGAGGTGCTGGTCCGCAGGTGGAGAAGATCGCATCGACAAGGGCCTGACGGATGAGTCTGAGATCC
 TGCGGTTCTGACGATGGCACCTGGTGGGCTGCTGCCGTCGCCACCCCATCCTCATCCGCAAGTA
 CCAGGCCAACTCGGGCACTGCCATGTGGTTCGGCACCTACATGTGGGGCGTCATCTATCTGAGGAATGTG
 GACCCCTGTCTGGTACGACACCGACGTGAAGCTGTTTGAGATACAGCGGGTG

ACGCGTACGCGGCCGCTCGAGCAGAACTCATCTCAGAAGAGGATCTGGCAGCAAATGATATCCTGGATT
 ACAAGGATGACGACGATAAGGTTTAA

Protein Sequence: >RC206740 protein sequence
Red=Cloning site Green=Tags(s)

MGSTDSKLNFRKAVIQLTTKTQPVEATDDAFWDQFWADTATSVQDVFALVPAAEIRAVREESPSNLATLC
YKAVEKLVQGAESGCHSEKEKQIVLNC SRLLRVLPYIFEDPDWRGFFWSTVPGAGRGGQGEEDDEHARP
LAESLLLAIDLLFCPDFTVQSHRRSTVDSAEDVHSLDSCEYIWEAGVGF AHSPQPNYIHDNMRMELLKL
LLTCFSEAMYLPPAPESGSTNPWVQFFCSTENRHALPLFTSLLNTVCAYDPVGYGIPYNHLLFSDYREPL
VEEAAQVLIVTLDHDSASASPTVDGTTTGTAMDDADPPGPENL FVNYLSRIHREEDFQF ILKGIARLLS
NP LLQTYLPNSTKKIQFHQELLVFWKLCDFNKKFLFFVLKSSDVL DILVPILFFLNDARADQSRVGLMH
IGVFILLLLSGERNFGVRLNKPYSIRVPM DIPVFTGTHADLLIVVFHKIITSGHQRLQPLFDCLLTI VVN
VSPYLKSLSMVTANKLLHLLLEAFSTTWFLF SAAQNHLVFFLLEVFNNIIQYQFDGNSNLVYAIIRKRSI
FHQLANLPTDPPTIHKALQRRRTPEPLSRTGSQEGTSMEGSRPAAPAEPGTLKTSLVATPGIDKLTEKS
QVSEDGTLRSLEPEPQQSLEDGSPAKGEP SQAWREQRRPSTSSASGQWSPTEWVLSWKS KLPLQTIMRL
LQVLVPQVEKICIDKGLTDESEILRFLQHGT LVGLLPVPHPI LIRKYQANS GTAMWFR TYMWGVIYLRNV
DPPVWYD TDVKLFEIQRV

TRTRPLEQKLISEEDLAANDILDYKDDDDKV

Chromatograms: https://cdn.origene.com/chromatograms/mk6201_h01.zip

Restriction Sites: Sgfl-Mlul

Cloning Scheme:


- ACCN:** NM_030630
- ORF Size:** 2364 bp
- OTI Disclaimer:** The molecular sequence of this clone aligns with the gene accession number as a point of reference only. However, individual transcript sequences of the same gene can differ through naturally occurring variations (e.g. polymorphisms), each with its own valid existence. This clone is substantially in agreement with the reference, but a complete review of all prevailing variants is recommended prior to use. [More info](#)
- OTI Annotation:** This clone was engineered to express the complete ORF with an expression tag. Expression varies depending on the nature of the gene.
- Components:** The ORF clone is ion-exchange column purified and shipped in a 2D barcoded Matrix tube containing 10ug of transfection-ready, dried plasmid DNA (reconstitute with 100 ul of water).

Reconstitution Method:

1. Centrifuge at 5,000xg for 5min.
2. Carefully open the tube and add 100ul of sterile water to dissolve the DNA.
3. Close the tube and incubate for 10 minutes at room temperature.
4. Briefly vortex the tube and then do a quick spin (less than 5000xg) to concentrate the liquid at the bottom.
5. Store the suspended plasmid at -20°C. The DNA is stable for at least one year from date of shipping when stored at -20°C.

RefSeq: [NM_030630.1](#), [NP_085133.1](#)

RefSeq Size: 3369 bp

RefSeq ORF: 2367 bp

Locus ID: 283987

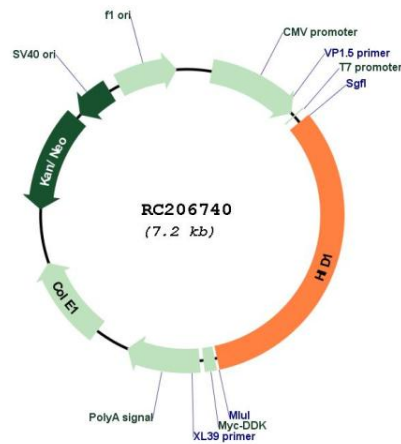
UniProt ID: [Q8IV36](#)

Cytogenetics: 17q25.1

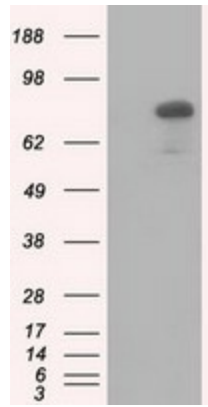
MW: 88.7 kDa

Gene Summary: May play an important role in the development of cancers in a broad range of tissues. [UniProtKB/Swiss-Prot Function]

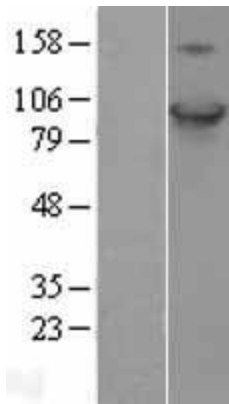
Product images:



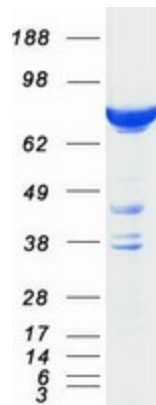
Circular map for RC206740



HEK293T cells were transfected with the pCMV6-ENTRY control (Cat# [PS100001], Left lane) or pCMV6-ENTRY C17orf28 (Cat# RC206740, Right lane) cDNA for 48 hrs and lysed. Equivalent amounts of cell lysates (5 ug per lane) were separated by SDS-PAGE and immunoblotted with anti-C17orf28(Cat# [TA501311]). Positive lysates [LY403066] (100ug) and [LC403066] (20ug) can be purchased separately from OriGene.



Western blot validation of overexpression lysate (Cat# [LY403066]) using anti-DDK antibody (Cat# [TA50011-100]). Left: Cell lysates from untransfected HEK293T cells; Right: Cell lysates from HEK293T cells transfected with RC206740 using transfection reagent MegaTran 2.0 (Cat# [TT210002]).



Coomassie blue staining of purified HID1 protein (Cat# [TP306740]). The protein was produced from HEK293T cells transfected with HID1 cDNA clone (Cat# RC206740) using MegaTran 2.0 (Cat# [TT210002]).