

## Product datasheet for RC206736

### PTPNS1L2 (SIRPD) (NM\_178460) Human Tagged ORF Clone

#### Product data:

**Product Type:** Expression Plasmids  
**Product Name:** PTPNS1L2 (SIRPD) (NM\_178460) Human Tagged ORF Clone  
**Tag:** Myc-DDK  
**Symbol:** PTPNS1L2  
**Synonyms:** dj576H24.4; PTPNS1L2  
**Mammalian Cell Selection:** Neomycin  
**Vector:** pCMV6-Entry (PS100001)  
**E. coli Selection:** Kanamycin (25 ug/mL)  
**ORF Nucleotide Sequence:** >RC206736 ORF sequence  
 Red=Cloning site Blue=ORF Green=Tags(s)

TTTTGTAATACGACTCACTATAGGGCGCCGGGAATTCGTCGACTGGATCCGGTACCGAGGAGATCTGCC  
 GCC**CGATCGCC**

ATGCCCATCCCTGCCTCCCCACTCCACCCACCTCTGCCTTCCTTACTGCTGTATCTGCTGCTTGAACCTGG  
 CAGGAGTCACACATGTGTCCATGTGCAACAAACGGAGATGTCACAGACTGTATCAACTGGGGAGTCAAT  
 CATCTTGAGTTGCAGCGTACCCGATACCTTACCAATGGACCTGTCTTGTGGTTCAAGGGAACAGGGCCA  
 AACCGAAATTAATCTACAATTTCAAACAAGGTAACCTTTCCAGAGTAAAAGAGATTGGAGACACCACCA  
 AGCCTGGCAACACAGACTTTTCCACCCGCATCCGTGAAATCTCTCTTGTGATGCTGGCACCTATTACTG  
 CGTGAAGTTCATAAAAGGAAGAGCTATCAAGGAGTACCAATCAGGTCGGGGCACTCAGGTGTTTGTACT  
 GAGCAGAAATCCAAGACCTCCAAGAACAGACCTGCAGGCAGAGCAGGCTCCAGGGCCACCATGATGCC  
 ATACCTGCCTCTCGGCCCTGCCTGAGAGAAACAGCACAAACTATTTTCGTCCAACCCTGCTGCTGCCTCCG  
 GCTGCTGGGACTCACAGGCTTGTGTCAAAA

**ACGCGT**ACGCGGCCGCTCGAGCAGAACTCATCTCAGAAGAGGATCTGGCAGCAATGATATCCTGGATT  
 ACAAGGATGACGACGATAAGGTTTAA

**Protein Sequence:** >RC206736 protein sequence  
 Red=Cloning site Green=Tags(s)

MPIPASPLHPPLPSLLL YLLELAGVTHVHVQQTMSQTVSTGESIILSCSVPDTPNGPVLWFKGTGP  
 NRKLIYNFKQGNFPRVKEIGDITKPGNTDFSTRIREISLADAGTYCVKFIKGRAIKEYQSRGTQVFVT  
 EQNPRPPKNRPAGRAGSRAHHAHTCLSALPERNSTNYFVQPCCLRLLGLTGLLSK

**TRTRPLEQKLI**SEEDLAANDILDYKDDDDKV

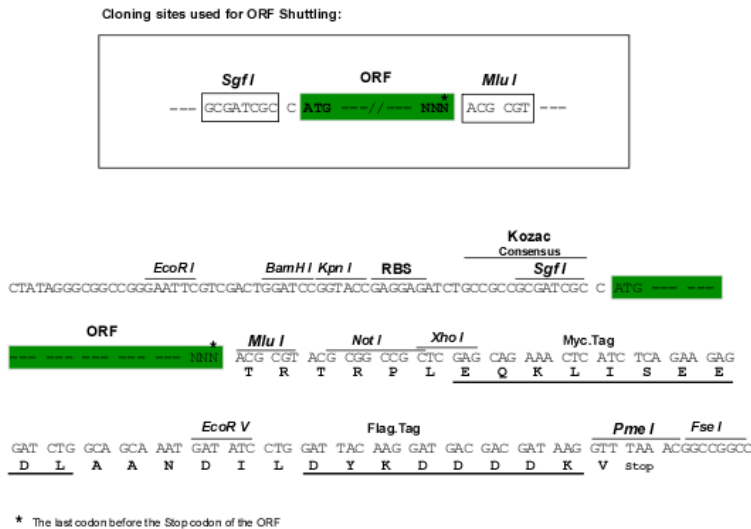


[View online »](#)

Chromatograms: [https://cdn.origene.com/chromatograms/mk6772\\_d11.zip](https://cdn.origene.com/chromatograms/mk6772_d11.zip)

Restriction Sites: SgfI-MluI

Cloning Scheme:



ACCN: NM\_178460

ORF Size: 591 bp

OTI Disclaimer: The molecular sequence of this clone aligns with the gene accession number as a point of reference only. However, individual transcript sequences of the same gene can differ through naturally occurring variations (e.g. polymorphisms), each with its own valid existence. This clone is substantially in agreement with the reference, but a complete review of all prevailing variants is recommended prior to use. [More info](#)

OTI Annotation: This clone was engineered to express the complete ORF with an expression tag. Expression varies depending on the nature of the gene.

Components: The ORF clone is ion-exchange column purified and shipped in a 2D barcoded Matrix tube containing 10ug of transfection-ready, dried plasmid DNA (reconstitute with 100 ul of water).

Reconstitution Method:

1. Centrifuge at 5,000xg for 5min.
2. Carefully open the tube and add 100ul of sterile water to dissolve the DNA.
3. Close the tube and incubate for 10 minutes at room temperature.
4. Briefly vortex the tube and then do a quick spin (less than 5000xg) to concentrate the liquid at the bottom.
5. Store the suspended plasmid at -20°C. The DNA is stable for at least one year from date of shipping when stored at -20°C.

RefSeq: [NM\\_178460.1](#), [NP\\_848555.1](#)

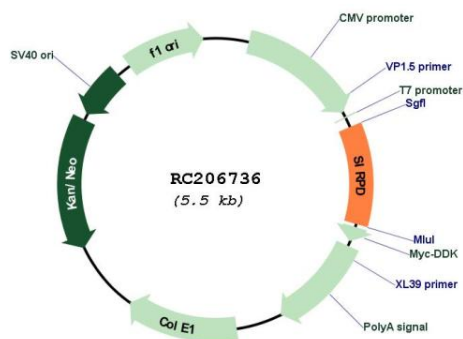
RefSeq Size: 868 bp

RefSeq ORF: 594 bp

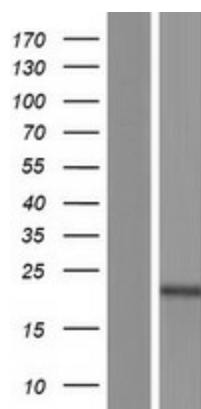
Locus ID: 128646

UniProt ID: [Q9H106](#)  
 Cytogenetics: 20p13  
 Protein Families: Druggable Genome, Phosphatase  
 MW: 21.7 kDa

**Product images:**



Circular map for RC206736



Western blot validation of overexpression lysate (Cat# [LY405931]) using anti-DDK antibody (Cat# [TA50011-100]). Left: Cell lysates from untransfected HEK293T cells; Right: Cell lysates from HEK293T cells transfected with RC206736 using transfection reagent MegaTran 2.0 (Cat# [TT210002]).