

Product datasheet for **RC206735**

IGSF11 (NM_152538) Human Tagged ORF Clone

Product data:

Product Type:	Expression Plasmids
Product Name:	IGSF11 (NM_152538) Human Tagged ORF Clone
Tag:	Myc-DDK
Symbol:	IGSF11
Synonyms:	BT-IgSF; CT119; CXADRL1; Igsf13; VSIG3
Mammalian Cell Selection:	Neomycin
Vector:	pCMV6-Entry (PS100001)
E. coli Selection:	Kanamycin (25 ug/mL)



[View online »](#)

ORF Nucleotide Sequence:

>RC206735 ORF sequence
 Red=Cloning site Blue=ORF Green=Tags(s)

TTTTGTAATACGACTCACTATAGGGCGGCCGGGAATTCGTCGACTGGATCCGGTACCGAGGAGATCTGCC
 GCC**GCGATCGCC**

ATGTCCTCTGGTGGAACTTTTGTCTGGTGGAACTGCTTTTCTAGAACTGGTGTTCAGCATCCCTGGAAG
 TGTGAGAGAGCCCTGGGAGTATCCAGGTGGCCCGGGTCAGACAGCAGTCTGCCCTGCACTTTCACTAC
 CAGCGCTGCCCTCATTAACCTCAATGTCATTTGGATGGTCACTCCTCTCTCCAATGCCAACCAACCTGAA
 CAGGTCATCCTGTATCAGGGTGGACAGATGTTTGTGGTGGCCCGGGTCCACGGTAGGGTAGGATTTA
 CAGGCACCATGCCAGTACCAATGTCTCTATCTTCAATAAACACTCAGTTATCAGACACTGGCACCTA
 CCAGTGCCTGGTCAACAACCTTCCAGACATAGGGGGCAGGAACATTGGGGTACCAGGTCTCACAGTGTTA
 GTTCCCCCTTCTGCCCCACTGCCAAATCCAAGGATCCCAGGATATTGGCAGCGATGTCATCCTGCTCT
 GTAGCTCAGAGGAAGGCATTCTCGACCAACTTACCTTTGGGAGAAGTTAGACAATACCCTCAAACCTACC
 TCCAACAGCTACTCAGGACCAGGTCCAGGGAACAGTACCATCCGGAACATCAGTGCCCTGTCTTACAGT
 TTGTACCAGTGCCTGGCTTCTAATGCTATTGGAACCAGCACCTGTCTTCTGGATCTCCAGGTTATTTAC
 CCCAGCCAGGAACATTGGACTAATAGCTGGAGCCATTGGCACTGGTGCAGTTATTATCATTTTTTGCAT
 TGCACTAATTTTAGGGGCATTCTTTTACTGGAGAAGCAAAAAATAAGAGGAGGAAGAAGAAGAAATTCCT
 AATGAAATAAGAGAGGATGATCTTCCACCAAGTGTCTTCTGCCAAAGCATTTCACACTGAGATTTCT
 CCTCGGACAACAACACTAACCTCTTCCAATGCCTACAACAGTCGATACTGGAGCAACAATCCAAAAGT
 TCATAGAAACACAGAGTCAGTCAGCCACTTCAGTACTGGGCCAATCTTCTCTTTCCACTCAGGCAAT
 GCCAACATACCATCCATTTATGCTAATGGGACCATCTGGTCCCGGGTCAACATAAGACTCTGGTAGTGA
 CAGCCAACAGAGGGTCATCACCACAGGTGATGTCCAGGAGCAATGGCTCAGTCAGTAGGAAGCCTCGGCC
 TCCACACTCATTCTACACCATCAGCCACGCAACACTGGAACGAATTGGTGCAGTACCTGTATGGTA
 CCAGCCAGAGTCGGGCCGGTCTTGGTA

ACGCGTACGCGGCCGCTCGAGCAGAACTCATCTCAGAAGAGGATCTGGCAGCAATGATATCCTGGATT
 ACAAGGATGACGACGATAAGGTTTAA

Protein Sequence:

>RC206735 protein sequence
 Red=Cloning site Green=Tags(s)

MSLVELLLWVNCFSRTGVAASLEVSESPGSIQVARGQTAVLPCTFTTSAALINLNVIMVTPLSNANQPE
 QVILYQGGQMFDFGAPRFHGRVFTGTMPATNVSIFINNTQLSDTGTQCLVNNLPDGGRIIGVTGLTVL
 VPPSAPHQIQGSQDIGSDVILLCSSEEGIPRPTYLWEKLDNTLKLPTATQDQVQGTVTIRNISALSSG
 LYQCVASNAIGTSTCLLDLQVISPOPRNIGLIAGAIGTGAVIIIFCIALILGAFFYWRSKNKEEEEEIIP
 NEIREDDLPPKCSSAKAFHTEISSDNNTLTSSNAYNSRYWSNNPKVHRNTESVSHFSDLGQSFHSGN
 ANIPSIYANGTHLVPQHKTLVVTANRGSSPQVMSRNSGVSRSRPRPPHHSYTI SHATLERIGAVPVMV
 PAQSRAGSLV

TRTRPLEQKLISEEDLAANDILDYKDDDDKV

Chromatograms:

https://cdn.origene.com/chromatograms/mk6330_e05.zip

Restriction Sites:

Sgfl-Mlul

Cloning Scheme:


ACCN: NM_152538

ORF Size: 1290 bp

OTI Disclaimer: The molecular sequence of this clone aligns with the gene accession number as a point of reference only. However, individual transcript sequences of the same gene can differ through naturally occurring variations (e.g. polymorphisms), each with its own valid existence. This clone is substantially in agreement with the reference, but a complete review of all prevailing variants is recommended prior to use. [More info](#)

OTI Annotation: This clone was engineered to express the complete ORF with an expression tag. Expression varies depending on the nature of the gene.

Components: The ORF clone is ion-exchange column purified and shipped in a 2D barcoded Matrix tube containing 10ug of transfection-ready, dried plasmid DNA (reconstitute with 100 ul of water).

Reconstitution Method:

1. Centrifuge at 5,000xg for 5min.
2. Carefully open the tube and add 100ul of sterile water to dissolve the DNA.
3. Close the tube and incubate for 10 minutes at room temperature.
4. Briefly vortex the tube and then do a quick spin (less than 5000xg) to concentrate the liquid at the bottom.
5. Store the suspended plasmid at -20°C. The DNA is stable for at least one year from date of shipping when stored at -20°C.

Note: Plasmids are not sterile. For experiments where strict sterility is required, filtration with 0.22um filter is required.

RefSeq: [NM_152538.1](#)

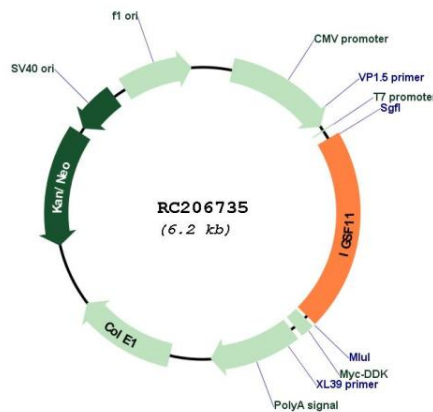
RefSeq Size: 3577 bp

RefSeq ORF: 1293 bp

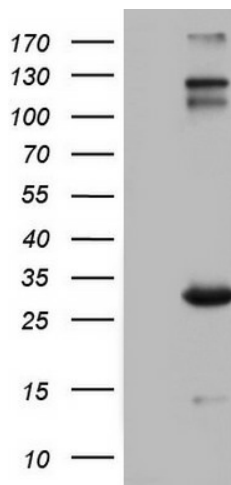
Locus ID: 152404

UniProt ID: [Q5DX21](#)
Cytogenetics: 3q13.32
Domains: ig, IGv, IGc2, IG
Protein Families: Transmembrane
MW: 46.2 kDa
Gene Summary: IGSF11 is an immunoglobulin (Ig) superfamily member that is preferentially expressed in brain and testis. It shares significant homology with coxsackievirus and adenovirus receptor (CXADR; MIM 602621) and endothelial cell-selective adhesion molecule (ESAM).[supplied by OMIM, Apr 2005]

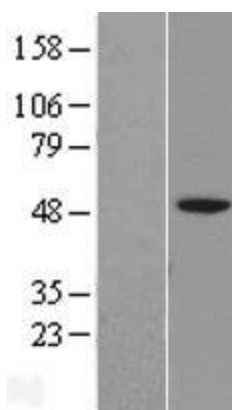
Product images:



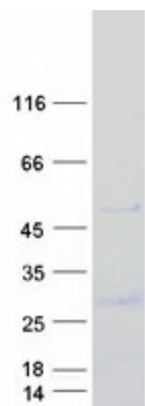
Circular map for RC206735



HEK293T cells were transfected with the pCMV6-ENTRY control (Cat# [PS100001], Left lane) or pCMV6-ENTRY IGSF11 (Cat# RC206735, Right lane) cDNA for 48 hrs and lysed. Equivalent amounts of cell lysates (5 ug per lane) were separated by SDS-PAGE and immunoblotted with anti-IGSF11(Cat# [TA803797]). Positive lysates [LY407451] (100ug) and [LC407451] (20ug) can be purchased separately from OriGene.



Western blot validation of overexpression lysate (Cat# [LY407451]) using anti-DDK antibody (Cat# [TA50011-100]). Left: Cell lysates from untransfected HEK293T cells; Right: Cell lysates from HEK293T cells transfected with RC206735 using transfection reagent MegaTran 2.0 (Cat# [TT210002]).



Coomassie blue staining of purified IGSF11 protein (Cat# [TP306735]). The protein was produced from HEK293T cells transfected with IGSF11 cDNA clone (Cat# RC206735) using MegaTran 2.0 (Cat# [TT210002]).