

## Product datasheet for RC206733

### LYSMD1 (NM\_212551) Human Tagged ORF Clone

#### Product data:

Product Type:	Expression Plasmids
Product Name:	LYSMD1 (NM_212551) Human Tagged ORF Clone
Tag:	Myc-DDK
Symbol:	LYSMD1
Synonyms:	SB145
Mammalian Cell Selection:	Neomycin
Vector:	pCMV6-Entry (PS100001)
E. coli Selection:	Kanamycin (25 ug/mL)
ORF Nucleotide Sequence:	>RC206733 ORF sequence Red=Cloning site Blue=ORF Green=Tags(s)

TTTTGTAATACGACTCACTATAGGGCGGCCGGAATTCGTCGACTGGATCCGGTACCGAGGAGATCTGCC  
GCC**CGATCGCC**

ATGGCTCCCCGTCTAGACAGCCCCGCCAGGGGGTCCAGGACTGCTTCAAGGGAGCCGGGCTCGTTCAT  
ATGGAAGCCTGGTGAATCGGCCTGCTCCCAAGTGAAGGAAAGACGCCTGGAGCATCAGTTGGAGCCCGG  
AGACACCCTGGCTGGACTAGCACTCAAATATGGGGTGACGATGGAACAGATTAACGTGCAAACCGCTT  
TATACTAATGACTCCATCTTCTGAAGAAAACCTCTACATCCCCATCCTGACAGAGCCCAGAGACCTGT  
TCAATGGTTTGGACTCTGAGGAAGAGAAAGATGGAGAGGAAAAAGTACACCCAAGTAACAGTGAAGTTTG  
GCCACACTCAACTGAGAGGAAGAAACAAGAGACAGGAGCAGGACGTGCCAATGGTGAAGTCTCCCCACA  
CCTGGCCAGGAAACCCACGCCATCCATGACCTCTCTGCTCTGATTTCTTAAGAAGCTTGATTCAC  
AGATCAGCCTGTCCAAGAAGGCTGCTGCTCAGAAGCTGAAAAAGGGGAAAATGGGGTACCTGGGGAGGA  
TGCAGGTCTCCACCTGAGCTCCCCTGGATGCAGCAACGAGCAGTCTAGGTCTGTGCCGTGACCCGT  
ACCTCTCGGACCCGACACTACGGGACCAGGAGGATGAAATCTTCAAATC

**ACGCGT**ACGCGGGCCGCTCGAGCAGAACTCATCTCAGAAGAGGATCTGGCAGCAAATGATATCCTGGATT  
ACAAGGATGACGACGATAAGGTTTAA



[View online »](#)

**Protein Sequence:** >RC206733 protein sequence  
 Red=Cloning site Green=Tags(s)

MASPSRQPPPGGSGLLQGSRARSYGSLVQSACSPVRERRLEHQLEPGDTLAGLALKYGVTEQIKRANRL  
 YTNDISIFLKKTL YIPILTEPRDLFNGLDSEEEKDGEEKVHPSNSEVWPHSTERKKQETGAGRANGEVLP  
 PGQETPTPIHDLASDFLKKLDSQISLSKKAQAQKLLKKGNGVPGEDAGLHLSSPWWMQRAVLGPVPLTR  
 TSRRTRLRDQEDEFKLL

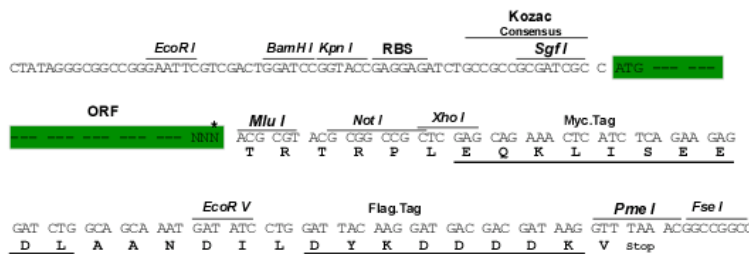
TRTRPLEQKLI SEEDLAANDILDYKDDDDKV

**Chromatograms:** [https://cdn.origene.com/chromatograms/mk6359\\_f06.zip](https://cdn.origene.com/chromatograms/mk6359_f06.zip)

**Restriction Sites:** SgfI-MluI

**Cloning Scheme:**

Cloning sites used for ORF Shuttling:



\* The last codon before the Stop codon of the ORF

**ACCN:** NM\_212551

**ORF Size:** 681 bp

**OTI Disclaimer:** The molecular sequence of this clone aligns with the gene accession number as a point of reference only. However, individual transcript sequences of the same gene can differ through naturally occurring variations (e.g. polymorphisms), each with its own valid existence. This clone is substantially in agreement with the reference, but a complete review of all prevailing variants is recommended prior to use. [More info](#)

**OTI Annotation:** This clone was engineered to express the complete ORF with an expression tag. Expression varies depending on the nature of the gene.

**Components:** The ORF clone is ion-exchange column purified and shipped in a 2D barcoded Matrix tube containing 10ug of transfection-ready, dried plasmid DNA (reconstitute with 100 ul of water).

**Reconstitution Method:**

1. Centrifuge at 5,000xg for 5min.
2. Carefully open the tube and add 100ul of sterile water to dissolve the DNA.
3. Close the tube and incubate for 10 minutes at room temperature.
4. Briefly vortex the tube and then do a quick spin (less than 5000xg) to concentrate the liquid at the bottom.
5. Store the suspended plasmid at -20°C. The DNA is stable for at least one year from date of shipping when stored at -20°C.

**RefSeq:** [NM\\_212551.5](#)

**RefSeq Size:** 2649 bp

**RefSeq ORF:** 684 bp

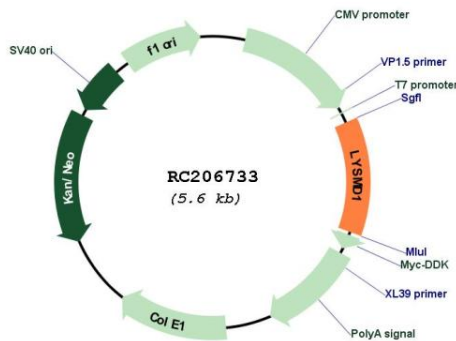
**Locus ID:** 388695

**UniProt ID:** [Q96S90](#)

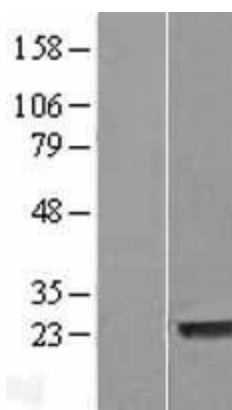
**Cytogenetics:** 1q21.3

**MW:** 25 kDa

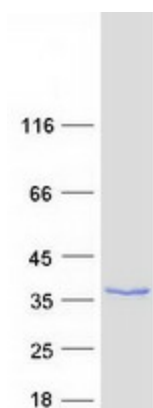
**Product images:**



Circular map for RC206733



Western blot validation of overexpression lysate (Cat# [LY403895]) using anti-DDK antibody (Cat# [TA50011-100]). Left: Cell lysates from untransfected HEK293T cells; Right: Cell lysates from HEK293T cells transfected with RC206733 using transfection reagent MegaTran 2.0 (Cat# [TT210002]).



Coomassie blue staining of purified LYSMD1 protein (Cat# [TP306733]). The protein was produced from HEK293T cells transfected with LYSMD1 cDNA clone (Cat# RC206733) using MegaTran 2.0 (Cat# [TT210002]).