

Product datasheet for RC206728L1

CCDC155 (KASH5) (NM_144688) Human Tagged Lenti ORF Clone

Product data:

Product Type:	Expression Plasmids
Product Name:	CCDC155 (KASH5) (NM_144688) Human Tagged Lenti ORF Clone
Tag:	Myc-DDK
Symbol:	KASH5
Synonyms:	CCDC155
Mammalian Cell Selection:	None
Vector:	pLenti-C-Myc-DDK (PS100064)
E. coli Selection:	Chloramphenicol (34 ug/mL)
ORF Nucleotide Sequence:	The ORF insert of this clone is exactly the same as(RC206728).
Restriction Sites:	SgfI-MluI
Cloning Scheme:	

Cloning sites used for ORF Shuttling:



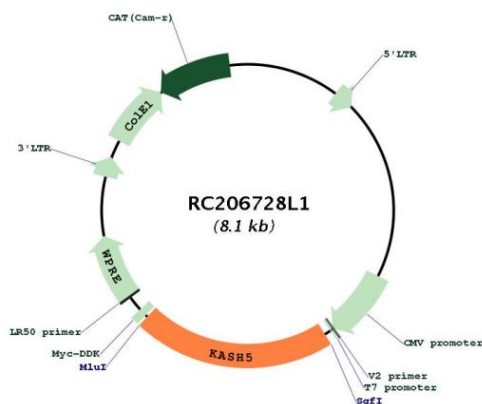
* The last codon before the Stop codon of the ORF.

ACCN:	NM_144688
ORF Size:	1686 bp

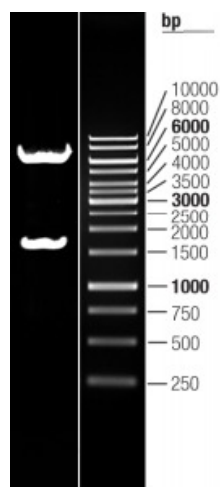


OTI Disclaimer:	The molecular sequence of this clone aligns with the gene accession number as a point of reference only. However, individual transcript sequences of the same gene can differ through naturally occurring variations (e.g. polymorphisms), each with its own valid existence. This clone is substantially in agreement with the reference, but a complete review of all prevailing variants is recommended prior to use. More info
OTI Annotation:	This clone was engineered to express the complete ORF with an expression tag. Expression varies depending on the nature of the gene.
Components:	The ORF clone is ion-exchange column purified and shipped in a 2D barcoded Matrix tube containing 10ug of transfection-ready, dried plasmid DNA (reconstitute with 100 ul of water).
Reconstitution Method:	<ol style="list-style-type: none"> 1. Centrifuge at 5,000xg for 5min. 2. Carefully open the tube and add 100ul of sterile water to dissolve the DNA. 3. Close the tube and incubate for 10 minutes at room temperature. 4. Briefly vortex the tube and then do a quick spin (less than 5000xg) to concentrate the liquid at the bottom. 5. Store the suspended plasmid at -20°C. The DNA is stable for at least one year from date of shipping when stored at -20°C.
RefSeq:	NM_144688.3
RefSeq Size:	2383 bp
RefSeq ORF:	1689 bp
Locus ID:	147872
UniProt ID:	Q8N6L0
Cytogenetics:	19q13.33
MW:	62.8 kDa
Gene Summary:	As a component of the LINC (Linker of Nucleoskeleton and Cytoskeleton) complex, involved in the connection between the nuclear lamina and the cytoskeleton. The nucleocytoplasmic interactions established by the LINC complex play an important role in the transmission of mechanical forces across the nuclear envelope and in nuclear movement and positioning. Required for telomere attachment to nuclear envelope in the prophase of meiosis and for rapid telomere prophase movements implicating a SUN1/2:KASH5 LINC complex in which SUN1 and SUN2 seem to act at least partial redundantly. Required for homologue pairing during meiotic prophase in spermatocytes and probably oocytes. Essential for male and female gametogenesis. Recruits cytoplasmic dynein to telomere attachment sites at the nuclear envelope in spermatocytes. In oocytes is involved in meiotic resumption and spindle formation.[UniProtKB/Swiss-Prot Function]

Product images:



Circular map for RC206728L1



Double digestion of RC206728L1 using SgfI and MluI