

## Product datasheet for **RC206726**

### **C1orf158 (NM\_152290) Human Tagged ORF Clone**

#### Product data:

**Product Type:** Expression Plasmids  
**Product Name:** C1orf158 (NM\_152290) Human Tagged ORF Clone  
**Tag:** Myc-DDK  
**Symbol:** C1orf158  
**Mammalian Cell Selection:** Neomycin  
**Vector:** pCMV6-Entry (PS100001)  
**E. coli Selection:** Kanamycin (25 ug/mL)  
**ORF Nucleotide Sequence:** >RC206726 ORF sequence  
Red=Cloning site Blue=ORF Green=Tags(s)

TTTTGTAATACGACTCACTATAGGGCGGCCGGAATTCGTCGACTGGATCCGGTACCGAGGAGATCTGCC  
GCC**CGATCGCC**

ATGTTTTGACTGCAGTAAATCCACAGCCACTCTCTACTCCGAGCTGGCAGATTGAGACCAAGTATTC  
CGAAAGTGCTCACTGGAAATTGGATGGAAGAGAGGAGAAAAGTTCCACCAGAGACTGACAAGACACCCCA  
ATCCATTTACAGAAAAGAATACATCCCCTTCCAGACCACAGACCAGACCAGATCAGGTGGTATGGG  
AAGAGGAAAGTTGAGGGCTACCTTACAACACCTGATCACCCACCAGGAGCCCCACATCGCTACC  
TGATCAGACCTATGACGACATTACAACCGCATGGTTACAACCCGGGGCTGCCTCCACTCCGCACTTG  
GAATGGACAGAAGTTGCTGTGGCTGCCAGAGAAGTCTGACTTTCCCTTCTTGCTCCCCCTACAACTAT  
GGACTCTATGAGCAGCTCAAGCAGAGACAGCTCACACCAAGGCTGGCCTGAAGCAGAGCACTTATACTT  
CATCCTACCCAGACCACCGTTGTGCGCTATGTCTGGAGGGAGCATGCGGTCCCGTCCCTCCCATCG  
CCTGCATCCTCTCCCACTTC

**ACGCGT**ACGCGGCCGCTCGAGCAGAACTCATCTCAGAAGAGGATCTGGCAGCAATGATATCCTGGATT  
ACAAGGATGACGACGATAAGGTTTAA

**Protein Sequence:** >RC206726 protein sequence  
Red=Cloning site Green=Tags(s)

MFLTAVNPQPLSTPSWQIETKYSTKVL TGNWMEERRKFTRDTPQSIYRKEYIPFPDHRPDQISRWYG  
KRKVEGLPYKHLITHHQEPHRYLISTYDDHYNRHGYNPGLPPLRTWNGQKLLWLPEKSDFPLLAPPTNY  
GLYEQLKQRQLTPKAGLKQSTYTSYPRPPLCAMSWREHAVPVPPhRLHPLPHF

**TR**TRPLEQKLISEEDLAANDILDYKDDDDKV

**Chromatograms:** [https://cdn.origene.com/chromatograms/mk6330\\_b10.zip](https://cdn.origene.com/chromatograms/mk6330_b10.zip)



[View online »](#)

Restriction Sites: SgfI-MluI

Cloning Scheme:



ACCN: NM\_152290

ORF Size: 582 bp

OTI Disclaimer: The molecular sequence of this clone aligns with the gene accession number as a point of reference only. However, individual transcript sequences of the same gene can differ through naturally occurring variations (e.g. polymorphisms), each with its own valid existence. This clone is substantially in agreement with the reference, but a complete review of all prevailing variants is recommended prior to use. [More info](#)

OTI Annotation: This clone was engineered to express the complete ORF with an expression tag. Expression varies depending on the nature of the gene.

Components: The ORF clone is ion-exchange column purified and shipped in a 2D barcoded Matrix tube containing 10ug of transfection-ready, dried plasmid DNA (reconstitute with 100 ul of water).

Reconstitution Method:

1. Centrifuge at 5,000xg for 5min.
2. Carefully open the tube and add 100ul of sterile water to dissolve the DNA.
3. Close the tube and incubate for 10 minutes at room temperature.
4. Briefly vortex the tube and then do a quick spin (less than 5000xg) to concentrate the liquid at the bottom.
5. Store the suspended plasmid at -20°C. The DNA is stable for at least one year from date of shipping when stored at -20°C.

RefSeq: [NM\\_152290.4](#)

RefSeq Size: 1068 bp

RefSeq ORF: 585 bp

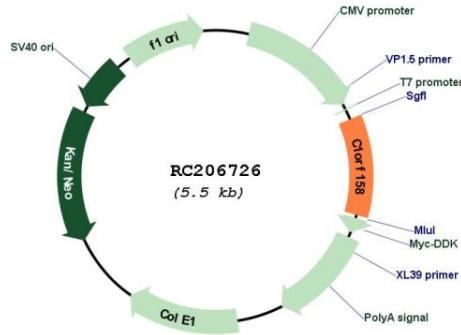
Locus ID: 93190

UniProt ID: [Q8N1D5](#)

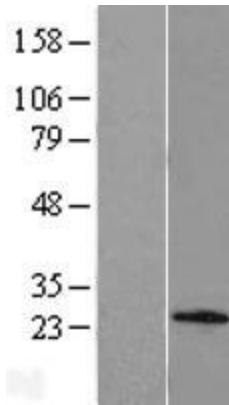
Cytogenetics: 1p36.21

MW: 23 kDa

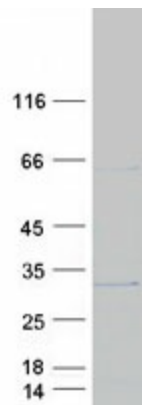
**Product images:**



Circular map for RC206726



Western blot validation of overexpression lysate (Cat# [LY407650]) using anti-DDK antibody (Cat# [TA50011-100]). Left: Cell lysates from untransfected HEK293T cells; Right: Cell lysates from HEK293T cells transfected with RC206726 using transfection reagent MegaTran 2.0 (Cat# [TT210002]).



Coomassie blue staining of purified C1orf158 protein (Cat# [TP306726]). The protein was produced from HEK293T cells transfected with C1orf158 cDNA clone (Cat# RC206726) using MegaTran 2.0 (Cat# [TT210002]).