

Product datasheet for RC206725

DMRTC2 (NM_001040283) Human Tagged ORF Clone

Product data:

Product Type:	Expression Plasmids
Product Name:	DMRTC2 (NM_001040283) Human Tagged ORF Clone
Tag:	Myc-DDK
Symbol:	DMRTC2
Mammalian Cell Selection:	Neomycin
Vector:	pCMV6-Entry (PS100001)
E. coli Selection:	Kanamycin (25 ug/mL)
ORF Nucleotide Sequence:	>RC206725 ORF sequence Red=Cloning site Blue=ORF Green=Tags(s)

TTTTGTAATACGACTCACTATAGGGCGGCCGGAATTCGTCGACTGGATCCGGTACCGAGGAGATCTGCCGCCGCGATCGCC

ATGGAACCCAGTGACATGCCTGCTGGCTACCACTGCCCTTAGACTCTGCCCCCTGGGATGAGACCAGAG
ACCCCCAGAGCACAGAGCTGATCCCCAGGAGAGCCATCAGCCGCTCTCCAACCTGCGCCCCGCTGCCGCAA
CCATGGTGTACCCGCCATCTCAAGGGCCACAAGCGCCTCTGCCTCTCCAGGCTTGCAGTGTACAAA
TGTGTCTCATCCTGGAGCGCCGAGGGTCATGGCTGCCAGGTGGCCTTGCCTAGGCAGCAGGAGGGCC
AGCTAAAGAAGCACCTGATGAGGAGAGGGGAAGCCTCTCCAAAGCTCCCAACCACTTCAGAAAGGGAAC
CACTCAGCCACAGGTCCCCTCTGGAAAGGAGAACATAGCACCCAGCCTCAGACCCCCATGGGGCAGTC
CTGCTGGCACCGACACCCCGGGAAGAACTCCTGTGGGCTCTGCTGCTCAGCCATCCCCGGAAGCCT
CGCCCTTGTCTGGACTCCGGTGCCTCCTGGCCCTTGGGTCCCTGGACTGGCTGCCTCCAGGCTTCTC
CATGCCACCACAGTGGTGTGCCGCTGCTGTACCAAGAACCTGCTGTCTCTGCTCCTCCCTTCCCTGGC
TTTGACCTGGCACCTCCCTCCAGCTGCCACTCATGGGCCCTTACCACCTGCCAGGATCTACCCAG
TACTGACAGCTCCTTTCTGGAGAGCCCCAAGGGCCCCCTAGCCAGCCCCGCACACTCAACTCTGAT
ACTCCAGCCCTGTGGACCCAGACCCTTTCAGCTACAGCCACAGGCCCTCTGGAGCCTCGTGCCTGGCC
CGGACATCTGGCCCTCAGAGTGGCAGCTGCAGCAAGAGGCAGCTGAAGCCCTCGTGGGGCTGAAAGATT
CATCCCAGGCTCCTCGTGTGACCCCTTCTGTGCCCCCAACCCTGCCTGGATCTCCCTGCTTACCCCTG
TGGCCACCAGCTCCTGCTGGAGGAAGAGGATTCCAGCCTGTTGGCCCTGTCTTCGACCCAGCCAGCC
CCCTCTGTTGCTCTGCATATTGGCCGTCTGGGGTCCATCTCCCTCCTGAGC

ACGCGTACGCGGCCGCTCGAGCAGAACTCATCTCAGAAGAGGATCTGGCAGCAAATGATATCCTGGATT
ACAAGGATGACGACGATAAGGTTTAA



[View online »](#)

Protein Sequence: >RC206725 protein sequence
Red=Cloning site Green=Tags(s)

MEPSDMPAGYHCPLDSAPWDETRDPQSTELIPRAISRSPTCARCRNHGVT AHLKGHKRLCLFQACECHK
 CVLILERRRVMAAQVALRRQEAQLKKHLMRRGEASPKAPNHFRKGTTPQVPSGKENIAPQPQTPHGAV
 LLAPTPPGKNSCGPLLLSHPPEASPLSWTPVPPGPVWPGHWLPPGF SMPPPVVCRLLYQEPVSLPPFFG
 FDPGTSLQLPTHGPF T T C P G S H P V L T A P L S G E P Q G P P S Q P R T H S T L I L Q C G T P D P L Q L Q P Q A S G A S C L A
 R T S G P S E W Q L Q Q E A A E A L V G L K D S S Q A P R V T P S V P P N P A W I S L L H P C G P P A P A G G R G F Q P V G P C L R P S P A
 P S V A L H I G R L G S I S L L S

TRTRPLEQKLISEEDLAANDILDYKDDDDKV

Chromatograms: https://cdn.origene.com/chromatograms/mk6520_c05.zip

Restriction Sites: SgfI-MluI

Cloning Scheme:

Cloning sites used for ORF Shuttling:



* The last codon before the Stop codon of the ORF

ACCN: NM_001040283

ORF Size: 1101 bp

OTI Disclaimer: The molecular sequence of this clone aligns with the gene accession number as a point of reference only. However, individual transcript sequences of the same gene can differ through naturally occurring variations (e.g. polymorphisms), each with its own valid existence. This clone is substantially in agreement with the reference, but a complete review of all prevailing variants is recommended prior to use. [More info](#)

OTI Annotation: This clone was engineered to express the complete ORF with an expression tag. Expression varies depending on the nature of the gene.

Components: The ORF clone is ion-exchange column purified and shipped in a 2D barcoded Matrix tube containing 10ug of transfection-ready, dried plasmid DNA (reconstitute with 100 ul of water).

Reconstitution Method:

1. Centrifuge at 5,000xg for 5min.
2. Carefully open the tube and add 100ul of sterile water to dissolve the DNA.
3. Close the tube and incubate for 10 minutes at room temperature.
4. Briefly vortex the tube and then do a quick spin (less than 5000xg) to concentrate the liquid at the bottom.
5. Store the suspended plasmid at -20°C. The DNA is stable for at least one year from date of shipping when stored at -20°C.

RefSeq: [NM_001040283.3](#)

RefSeq Size: 1821 bp

RefSeq ORF: 1104 bp

Locus ID: 63946

UniProt ID: [Q8IXT2](#)

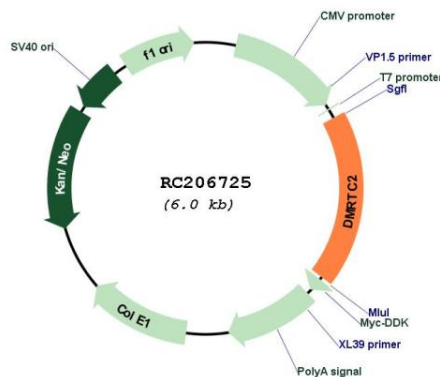
Cytogenetics: 19q13.2

Protein Families: Transcription Factors

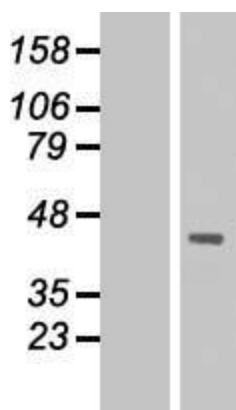
MW: 39.1 kDa

Gene Summary: May be involved in sexual development.[UniProtKB/Swiss-Prot Function]

Product images:



Circular map for RC206725



Western blot validation of overexpression lysate (Cat# [LY421738]) using anti-DDK antibody (Cat# [TA50011-100]). Left: Cell lysates from untransfected HEK293T cells; Right: Cell lysates from HEK293T cells transfected with RC206725 using transfection reagent MegaTran 2.0 (Cat# [TT210002]).