

Product datasheet for RC206714

C1orf105 (NM_139240) Human Tagged ORF Clone

Product data:

Product Type: Expression Plasmids
 Product Name: C1orf105 (NM_139240) Human Tagged ORF Clone
 Tag: Myc-DDK
 Symbol: C1orf105
 Mammalian Cell Selection: Neomycin
 Vector: pCMV6-Entry (PS100001)
 E. coli Selection: Kanamycin (25 ug/mL)
 ORF Nucleotide Sequence: >RC206714 ORF sequence
 Red=Cloning site Blue=ORF Green=Tags(s)

TTTTGTAATACGACTCACTATAGGGCGGCCGGAATTCGTCGACTGGATCCGGTACCGAGGAGATCTGCC
 GCC**CGATCGCC**

ATGGAAAAAGAGAACTAAAGGCTTCTGTTCCAAAATTTGACAAGATTCCTTGGCTTAGTGAGGCCAGCC
 TTGTAACAAGCCATTAGTGCTCAGCCTCCCAGAAGATATCCTCATACCTCTGCGACTTTTCTGACTTC
 ATCCAAGAAGAAATATGAATTTGCCAATTTGTTTCAAGTTCAGATGTTTTATCTAAGGCCAGGAGGAAC
 CAGTGTGACTCCATGCTGCTCAGAAACCAACAGCTGTGCTCCACATGTCAAGAAATGAAAATGGTACAAC
 CAAGAACAATGAAAATCCAGATGATCCAAAAGCATCCTTTGAGAATTGTATGAGTTATAGAATGAGTCT
 TCATCAACCCAAATTCAGACTACACCTGAGCCTTTCCATGATGACATCCCAACAGAAAACATTCCTAC
 AGACTGCCATTCTGGGCCCCAGGACAGCTGTCTCCACGGATTACTGACAGAGGCCTACAAACTCTAA
 AAGAGAGACAACGTTCTTCTTCCAGAAAGGAACCAATAGGCAAGACAACGAGGCAG

ACGCGTACGCGGCCGCTCGAGCAGAACTCATCTCAGAAGAGGATCTGGCAGCAATGATATCCTGGATT
 ACAAGGATGACGACGATAAGGTTTAA

Protein Sequence: >RC206714 protein sequence
 Red=Cloning site Green=Tags(s)

MEKRELKASVPKFDKIPWLSEASLVNKPLVLSLPRRYPHTSATFLTSSKKNMNLPILFQVPDVL SKARRN
 QCDSMLLRNQQLCSTCQEMKMQPRTMKIPDDPKASFENCMSYRMSLHQPKFQTTPEPFHDDIPTENIHY
 RLPILGPRTAVFHGLL TEAYKTLKERQRSSLPRKEPIGKTTRQ

TRTRPLEQKLISEEDLAANDILDYKDDDDKV

Chromatograms: https://cdn.origene.com/chromatograms/mk6330_f05.zip

Restriction Sites: SgfI-MluI



[View online »](#)

Cloning Scheme:


ACCN: NM_139240

ORF Size: 549 bp

OTI Disclaimer: The molecular sequence of this clone aligns with the gene accession number as a point of reference only. However, individual transcript sequences of the same gene can differ through naturally occurring variations (e.g. polymorphisms), each with its own valid existence. This clone is substantially in agreement with the reference, but a complete review of all prevailing variants is recommended prior to use. [More info](#)

OTI Annotation: This clone was engineered to express the complete ORF with an expression tag. Expression varies depending on the nature of the gene.

Components: The ORF clone is ion-exchange column purified and shipped in a 2D barcoded Matrix tube containing 10ug of transfection-ready, dried plasmid DNA (reconstitute with 100 ul of water).

- Reconstitution Method:**
1. Centrifuge at 5,000xg for 5min.
 2. Carefully open the tube and add 100ul of sterile water to dissolve the DNA.
 3. Close the tube and incubate for 10 minutes at room temperature.
 4. Briefly vortex the tube and then do a quick spin (less than 5000xg) to concentrate the liquid at the bottom.
 5. Store the suspended plasmid at -20°C. The DNA is stable for at least one year from date of shipping when stored at -20°C.

RefSeq: [NM_139240.2](#), [NP_640333.2](#)

RefSeq Size: 985 bp

RefSeq ORF: 552 bp

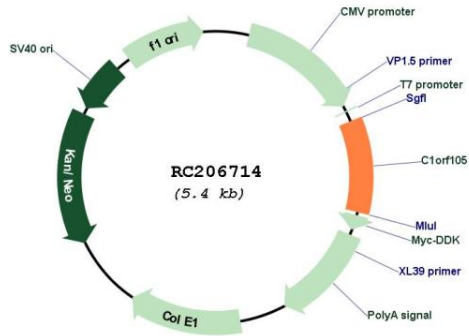
Locus ID: 92346

UniProt ID: [O95561](#)

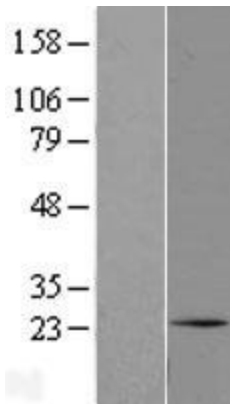
Cytogenetics: 1q24.3

MW: 21.2 kDa

Product images:



Circular map for RC206714



Western blot validation of overexpression lysate (Cat# [LY408362]) using anti-DDK antibody (Cat# [TA50011-100]). Left: Cell lysates from untransfected HEK293T cells; Right: Cell lysates from HEK293T cells transfected with RC206714 using transfection reagent MegaTran 2.0 (Cat# [TT210002]).