

Product datasheet for **RC206713**

NPTX2 (NM_002523) Human Tagged ORF Clone

Product data:

Product Type:	Expression Plasmids
Product Name:	NPTX2 (NM_002523) Human Tagged ORF Clone
Tag:	Myc-DDK
Symbol:	NPTX2
Synonyms:	NARP; NP-II; NP2
Mammalian Cell Selection:	Neomycin
Vector:	pCMV6-Entry (PS100001)
E. coli Selection:	Kanamycin (25 ug/mL)



[View online »](#)

ORF Nucleotide Sequence:

>RC206713 representing NM_002523
 Red=Cloning site Blue=ORF Green=Tags(s)

TTTTGTAATACGACTCACTATAGGGCGGCCGGAATTCGTCGACTGGATCCGGTACCGAGGAGATCTGCC
 GCC**CGGATCGCC**

ATGCTGGCGCTGCTGGCCGCCAGCGTGGCGCTCGCCGTGGCCGCTGGGGCCAGGACAGCCGGCGCCCG
 GTAGCCGCTTCGTGTGCACGGCACTGCCCCAGAGGCGGTGCACGCCGGCTGCCCGCTGCCCGCATGCC
 CATGCAGGGCGCGCGCAGAGTCCCAGAGGAGCTGAGGGCCGCGGTGCTGCAGCTGCGCGAGACCGCT
 GTGCAGCAGAAGGAGACGCTGGCGCGCAGCGCGAGGCCATCCGCGAGCTCACGGCAAGCTAGCGCGCT
 GCGAGGGGCTGGCGGGCGCAAGGCGCGCGCGGGGGCCACGGGAAGGACACTATGGCGACCTGCC
 GCGGGACCCCGCCACGTCGTGGAGCAGCTCAGCCGCTCGCTGCAGACCCCTCAAGGACCGCTGGAGAGC
 CTCGAGCACCAGCTCAGAGCAAACGTGTCCAATGCTGGGCTGCCCGCGACTTCCGCGAGGTGCTCCAGC
 AGCGGCTGGGGAGCTGGAGAGGACGTTCTGCGCAAGGTGGCAGAGCTGGAGGACGAGAAGTCCCTGCT
 GCACAATGAGACCTCGGCTCACCGGCAGAAGACCAGAGCACCCCTGAACGCGCTGCTGCAGAGGGTACC
 GAGCTGGAGCGAGGCAATAGCGCCTTAAAGTACCAGATGCGTTCAAGGTGCCCTCCACTCCGCACAA
 ACTACCTATACGGCAAGATCAAGAAGACGCTGCCTGAGCTGTACGCCCTTACCATCTGCCTGTGGCTGCG
 GTCCAGCGCTCACAGGCATTGGCACCCCTTCTCCTATGCGGTGCCAGGGCAGGCCAACGAGATCGTG
 CTGATCGAGTGGGCAACAACCCATCGAGCTGCTCATCAACGACAAGGTTGCGCAGTGCCCTGTTTTG
 TCAGTGACGGCAAGTGGCACCATCTGTGTCACTGGACGACACGGGATGGCATGTGGGAGGCATTCCA
 GGACGGAGAGAAGCTGGGCACTGGGAGAACCTGGCCCTGGCACCCATCAAGCCCGGGGCGTGCTG
 ATCCTTGGACAAGAGCAGGACACCGTGGGGGTAGGTTTGTGATGCCACTCAGGCATTTGTCGGGGAGCTCA
 GCCAGTTCAACATATGGGACCGCTCCTTCGCGCACAAAGAAATTGTCAACATCGCAACTGCTCCACAAA
 CATGCCGGGCAACATCATCCCGTGGGTGGACAATAACGTCGATGTGTTCCGAGGGCCCTCCAAGTGCCCC
 GTGGAGACGTGTGAGGAGCGTCTCCTTGACTTG

ACGCGTACGCGGCCGCTCGAGCAGAACTCATCTCAGAAGAGGATCTGGCAGCAAATGATATCCTGGATT
 ACAAGGATGACGACGATAAGGTTTAA

Protein Sequence:

>RC206713 representing NM_002523
 Red=Cloning site Green=Tags(s)

MLALLAASVALAVAAGAQDSPAPGSRFVCTALPPEAVHAGCLPAMPMQGGAQSPEEELRAAVLQLRETV
 VQKQKTLGAQREAIREL TGKLARCEGLAGGKARGAGATGKDTMGDLPRDPGHVVEQLSRSLQTLKDRLES
 LEHQLRANVSNAGLPGDFREVLQQRLEGERQLLRKVAELEDEKSLLNHNETSAHRQKTESTLNALLQRVT
 ELERGNFAFKSPDAFKVSLPLRTNYLYGKIKKTLPELYAFTICLWLRSSASPGIGTPFSYAVPGQANEIV
 LIEWGNPIELLINDKVAQLPLFVSDGKWHHICVTWTTTRDGMWEAFQDGEKLGTEENLAPWHPKIPGGVL
 ILGQEQDVTVGGFRDATQAFVVELSQFNIWDRVLAQEI VNIANCSTNMPGNIIPWVDNNVDVFGGASKWP
 VETCEERLLDL

TRTRPLEQKLISEEDLAANDILDYKDDDDKV

Chromatograms:

https://cdn.origene.com/chromatograms/mg4103_e01.zip

Restriction Sites:

SgfI-MluI

Cloning Scheme:


ACCN: NM_002523

ORF Size: 1293 bp

OTI Disclaimer: The molecular sequence of this clone aligns with the gene accession number as a point of reference only. However, individual transcript sequences of the same gene can differ through naturally occurring variations (e.g. polymorphisms), each with its own valid existence. This clone is substantially in agreement with the reference, but a complete review of all prevailing variants is recommended prior to use. [More info](#)

OTI Annotation: This clone was engineered to express the complete ORF with an expression tag. Expression varies depending on the nature of the gene.

Components: The ORF clone is ion-exchange column purified and shipped in a 2D barcoded Matrix tube containing 10ug of transfection-ready, dried plasmid DNA (reconstitute with 100 ul of water).

Reconstitution Method:

1. Centrifuge at 5,000xg for 5min.
2. Carefully open the tube and add 100ul of sterile water to dissolve the DNA.
3. Close the tube and incubate for 10 minutes at room temperature.
4. Briefly vortex the tube and then do a quick spin (less than 5000xg) to concentrate the liquid at the bottom.
5. Store the suspended plasmid at -20°C. The DNA is stable for at least one year from date of shipping when stored at -20°C.

RefSeq: [NM_002523.3](#)

RefSeq Size: 2746 bp

RefSeq ORF: 1296 bp

Locus ID: 4885

UniProt ID: [P47972](#)

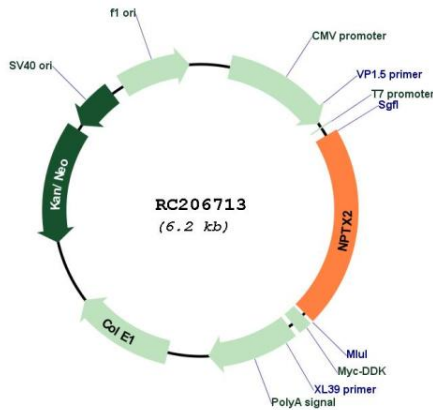
Cytogenetics: 7q22.1

Protein Families: Secreted Protein

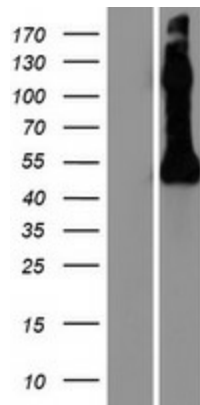
MW: 46.9 kDa

Gene Summary: This gene encodes a member of the family of neuronal petraxins, synaptic proteins that are related to C-reactive protein. This protein is involved in excitatory synapse formation. It also plays a role in clustering of alpha-amino-3-hydroxy-5-methyl-4-isoxazolepropionic acid (AMPA)-type glutamate receptors at established synapses, resulting in non-apoptotic cell death of dopaminergic nerve cells. Up-regulation of this gene in Parkinson disease (PD) tissues suggests that the protein may be involved in the pathology of PD. [provided by RefSeq, Feb 2009]

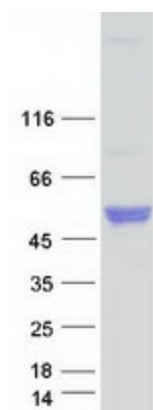
Product images:



Circular map for RC206713



Western blot validation of overexpression lysate (Cat# [LY419275]) using anti-DDK antibody (Cat# [TA50011-100]). Left: Cell lysates from un-transfected HEK293T cells; Right: Cell lysates from HEK293T cells transfected with RC206713 using transfection reagent MegaTran 2.0 (Cat# [TT210002]).



Coomassie blue staining of purified NPTX2 protein (Cat# [TP306713]). The protein was produced from HEK293T cells transfected with NPTX2 cDNA clone (Cat# RC206713) using MegaTran 2.0 (Cat# [TT210002]).