

Product datasheet for **RC206704**

CCDC7 (NM_001026383) Human Tagged ORF Clone

Product data:

| | |
|---------------------------|---|
| Product Type: | Expression Plasmids |
| Product Name: | CCDC7 (NM_001026383) Human Tagged ORF Clone |
| Tag: | Myc-DDK |
| Symbol: | CCDC7 |
| Synonyms: | BIOT2; BioT2-A; BioT2-B; BioT2-C; C10orf68 |
| Mammalian Cell Selection: | Neomycin |
| Vector: | pCMV6-Entry (PS100001) |
| E. coli Selection: | Kanamycin (25 ug/mL) |



[View online »](#)

ORF Nucleotide Sequence:

>RC206704 ORF sequence
 Red=Cloning site Blue=ORF Green=Tags(s)

TTTTGTAATACGACTCACTATAGGGCGGCCGGAATTCGTCGACTGGATCCGGTACCGAGGAGATCTGCC
 GCC**CGCATCGCC**

ATGAAACCAGTAAAGCATCTGTTGACCACCAGTAAACAAATCGGCAATGTTCCAGCATTAACTACTAAAA
 AAGGACTACATAATTTACCATTATCACCTGAGCTAAAGGAAAAACATAATGCAAAATTAATTCATGATAA
 AATTGAACCAATGGTCTTAAGATCTCCACCAACAGGAGAATCCATTTTACGGTATGCTTTGCCATTCCA
 TCGAGTAAAGACAAAGAACTTACTACCAGAAGATGAAATGATCGGAAAAATATCAAACATCTGAAGATGG
 TTGTTTCCACTTTGGAAGAACTTATGGACATTGCGATCAGAATGGAGAAGAACCATTTGTAAGCATGA
 ACATGAAGAATTATCTTTATCTGTTGGGGATGATATGAATTCATTCTTGACATATTGTTCCGAATTTGCA
 GCTCAGCTAGAAGAAGCACTTAAAGAAGAACAAAATATTTGGAATCTCTTTTAAAGTGGTTTCAGTGCC
 AGGTCAATCAGATGGAAGAAATAAGTAAAGATCAAACCTTTTACAAGCAGAGCCTCCAAAACCTGACAA
 AACAGTCATTTTAAATATTGCAGAAATAGTAAGGCTTGTACAAAGATTTGAAGAAGTGAAGAATCGCCTT
 AAACAGAGGTCTAAATCCTCCGTGAAAGTCATGTTGTCTAAAACCTATGGATAAAGAAAAATCGACCAGAAG
 CAGTGAAGAAAGTTGTGAAGCTCTGGCACAGAAAAATTGAAGAATTCTTAGAAGCCCACTCAACTGATGAATT
 TAAAGATGTTTCTGCAACAGAACCACAAACTGCTCATTCAATGACTAATCGATTTAATGCCATGTTGAAA
 GTATTTGAAAACAGGCAAAATATGTTGGAGAGCTGTAATGATCAAGTTTTGTTAGATGCTGAATACA
 AACAGATGCAGTGTGATTTTCAGTTGTTATCAGAAGAGAAGTTGGTGTGGAAAAATGAACTACAAAAAGTT
 GAAGGACAAAGAGAAAACCTAAGCCTACAAATAATCGAACAAAGAAAGCTGTGAAAACAGTGAAGAAAAA
 GACAAAGGAAAACTCTGAGGATTCAGAAAAGAAGATGTCTCCAGAAAAAGAGTTTAAAAATAAAGAAAGATT
 TGGATCAAGTACAGAAAGTAGCACGTCTGAAAATTGAGAACAAAGTCTTCAGGACAAATGAAACAGGC
 TTTACAGGAAGCTGAAAAGCTAAGCATCAACTTAACTATTTTCTAAATCAAGAGAAGTTACTTAAAAGT
 GAGGGGAAAACTGAGACAACAATGCAAGTGGGTAAATAGTCAAACAAAAGTTAAAGGTGAAGATTCAAAAA
 ATATACCATTGGAGAAAGAAACAAGAAAATCACTGGTTTCAGATTCAGGTGGACAAGGACAAGTGATAA
 AATCCAAGAATATCCACAGATCACTGCCAAAAGCGGAAGACTGATTGAAAAGAGATGC

ACGCGTACGCGGCCGCTCGAGCAGAAACTCATCTCAGAAGAGGATCTGGCAGCAATGATATCCTGGATT
 ACAAGGATGACGACGATAAGGTTTAA

Protein Sequence:

>RC206704 protein sequence
 Red=Cloning site Green=Tags(s)

MKPVKHLTTSNKSANVPALTTKKGLHNLPLSPELKEKHNAKLIHDKIEPMVLRSPPTGESILRYALPIP
 SSKTKNLLPEDEMIGKIIKHLKMVVSTLEETYGHCDQNGEFPVKHEHEELSLVGDMDNSFLTYCSQFA
 AQLLEEALKEEQNILESLFKWFQVQVNMEEISKDQTLQAEPPKPKDKTIVILNIAEIVRLVQRFEELKNRL
 KQRSKSSVKVMLSKTMDKENRPEAVKSCEALAQKIEEFLEAHSTDEFKDVSAPEPQTAHSMNRFNAMLK
 VFENQANMLERAVNDQVLLDAEYKQMOCDFQLLSEEKLVLENELQKLKDKKTKPTNRRTKKAVKTVKKK
 DKGKSEDSSEKMSPEKEFKIKEDLDQVQKVARLEIENKVLQEQLKQALQEAEKAKHQLNYFLNQEKLLKS
 EGKTETTMQVGNSTKVKGEDSKNIPLEKETRKSLSVSDSGGQRTSDKIQEYQPITAQSGRLIEKRC

TRTRPLEQKLISEEDLAANDILDYKDDDDKV

Chromatograms:

https://cdn.origene.com/chromatograms/mk6344_e04.zip

Restriction Sites:

Sgfl-Mlul

Cloning Scheme:


ACCN: NM_001026383

ORF Size: 1458 bp

OTI Disclaimer: The molecular sequence of this clone aligns with the gene accession number as a point of reference only. However, individual transcript sequences of the same gene can differ through naturally occurring variations (e.g. polymorphisms), each with its own valid existence. This clone is substantially in agreement with the reference, but a complete review of all prevailing variants is recommended prior to use. [More info](#)

OTI Annotation: This clone was engineered to express the complete ORF with an expression tag. Expression varies depending on the nature of the gene.

Components: The ORF clone is ion-exchange column purified and shipped in a 2D barcoded Matrix tube containing 10ug of transfection-ready, dried plasmid DNA (reconstitute with 100 ul of water).

- Reconstitution Method:**
1. Centrifuge at 5,000xg for 5min.
 2. Carefully open the tube and add 100ul of sterile water to dissolve the DNA.
 3. Close the tube and incubate for 10 minutes at room temperature.
 4. Briefly vortex the tube and then do a quick spin (less than 5000xg) to concentrate the liquid at the bottom.
 5. Store the suspended plasmid at -20°C. The DNA is stable for at least one year from date of shipping when stored at -20°C.

RefSeq: [NM_001026383.3](#)

RefSeq Size: 1970 bp

RefSeq ORF: 1461 bp

Locus ID: 79741

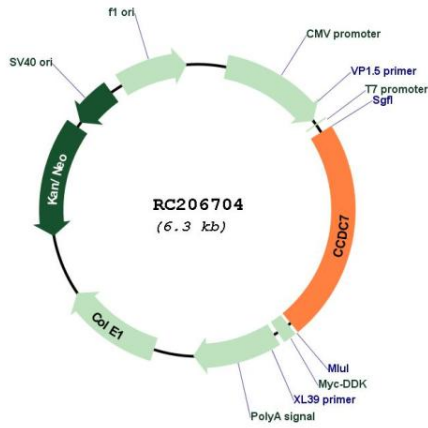
UniProt ID: [Q96M83](#)

Cytogenetics: 10p11.22

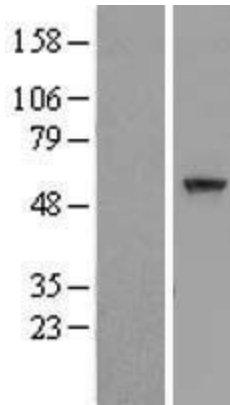
MW: 55.8 kDa

Gene Summary: May play a role in tumorigenesis.[UniProtKB/Swiss-Prot Function]

Product images:



Circular map for RC206704



Western blot validation of overexpression lysate (Cat# [LY422464]) using anti-DDK antibody (Cat# [TA50011-100]). Left: Cell lysates from untransfected HEK293T cells; Right: Cell lysates from HEK293T cells transfected with RC206704 using transfection reagent MegaTran 2.0 (Cat# [TT210002]).



Coomassie blue staining of purified CCDC7 protein (Cat# [TP306704]). The protein was produced from HEK293T cells transfected with CCDC7 cDNA clone (Cat# RC206704) using MegaTran 2.0 (Cat# [TT210002]).