

## Product datasheet for **RC206700**

### CCDC172 (NM\_198515) Human Tagged ORF Clone

#### Product data:

Product Type:	Expression Plasmids
Product Name:	CCDC172 (NM_198515) Human Tagged ORF Clone
Tag:	Myc-DDK
Symbol:	CCDC172
Synonyms:	C10orf96
Mammalian Cell Selection:	Neomycin
Vector:	pCMV6-Entry (PS100001)
E. coli Selection:	Kanamycin (25 ug/mL)
ORF Nucleotide Sequence:	>RC206700 ORF sequence Red=Cloning site Blue=ORF Green=Tags(s)

TTTTGTAATACGACTCACTATAGGGCGGCCGGAATTCGTCGACTGGATCCGGTACCGAGGAGATCTGCC  
GCC**CGCATCGCC**

ATGAGCTTGGAGTCCCTGTTTCAGCACATCATCTTCACCGAGCATCAGGCGGAGGAGAGTCCGCCGTTTGA  
TGCGAGAAGTAAGGTCGGAAATAACCAGATGTCGTGAAAAAATTAAGAAAGCAACGGAGGAGCTGAATGA  
AGAGAAAATCAAGCTGGAATCTAAGTTCAACAGTTTTTTGAAAAATCCTTCTTCTTACAGCTTTTGAAA  
GCTCATGAAAATGCTTTAGAAAAACAGTACAGTAAAATTACAAACCATAGGAATATGCTTCTTCAAACCT  
TTGAGGCTATAAAGAAACAAATGATAGAGGAGGAAGACAAATTTATTAAGGAAATTACAGACTTTAATAA  
TGATTATGAAATAACAAAGAAAAGAGAGCTTTTGATGAAAGAAAATGCAAGATTGAAATATCTGACTTA  
GAAAACCAAGCAAACATGTTGAAAAGTGAATGAAGTCAATGGAACATGATAGTAGCCAGTTAAATGAAC  
TTCAAAAAACAAAAGAGTGAATTGATACAAGAATATTTACTCTCAAAGAAAACCTAAAGTTTTTGAAGA  
TGAAGAGAATGAATCCATTTGACTACCAATATCTAGAGGCAGAAAAAATAAAATCAGTGAAAAGCCT  
CAAAATGATACAGAAATGCTTAAGACTTAAAAAGAATTAGAACTTTATAAGGAAGATGACATGAAAAGTG  
TTTATGAAGCTCTCAAACAGAAATAGAATTTTTGGAGTTGACATTGGCACAGAAAGATCTTCAGGAAAG  
CAAA

**ACGCGT**ACGCGGCCGCTCGAGCAGAAACTCATCTCAGAAGAGGATCTGGCAGCAAATGATATCCTGGATT  
ACAAGGATGACGACGATAAGGTTTAA



[View online »](#)

**Protein Sequence:** >RC206700 protein sequence  
Red=Cloning site Green=Tags(s)

MSLES LFQHIIFTEHQAEESRRLMREVRSEITRCREKIKKATEELNEEKIKLESKVQQFFEKSFLLQLLK  
 AHENALEKQYSEITNHRNMLLQTFEAIKKQMIEEEDKFIKEITDFNNDYEITKKRELLMKENVKIEISDL  
 ENQANMLKSEMKSMEHDSSQLNELQKQKSELIQELFTLQRKLVFEDEENESICTTKYLEAEKIKISEKP  
 QNDTECLRLKKELELYKEDDMESVYEALQTEIEFLELTLAQKDLQESK

TRTRPLEQKLISEEDLAANDILDYKDDDDKV

**Chromatograms:** [https://cdn.origene.com/chromatograms/mk6344\\_d07.zip](https://cdn.origene.com/chromatograms/mk6344_d07.zip)

**Restriction Sites:** SgfI-MluI

**Cloning Scheme:**



**ACCN:** NM\_198515

**ORF Size:** 774 bp

**OTI Disclaimer:** The molecular sequence of this clone aligns with the gene accession number as a point of reference only. However, individual transcript sequences of the same gene can differ through naturally occurring variations (e.g. polymorphisms), each with its own valid existence. This clone is substantially in agreement with the reference, but a complete review of all prevailing variants is recommended prior to use. [More info](#)

**OTI Annotation:** This clone was engineered to express the complete ORF with an expression tag. Expression varies depending on the nature of the gene.

**Components:** The ORF clone is ion-exchange column purified and shipped in a 2D barcoded Matrix tube containing 10ug of transfection-ready, dried plasmid DNA (reconstitute with 100 ul of water).

**Reconstitution Method:**

1. Centrifuge at 5,000xg for 5min.
2. Carefully open the tube and add 100ul of sterile water to dissolve the DNA.
3. Close the tube and incubate for 10 minutes at room temperature.
4. Briefly vortex the tube and then do a quick spin (less than 5000xg) to concentrate the liquid at the bottom.
5. Store the suspended plasmid at -20°C. The DNA is stable for at least one year from date of shipping when stored at -20°C.

**RefSeq:** [NM\\_198515.3](#)

**RefSeq Size:** 1703 bp

**RefSeq ORF:** 777 bp

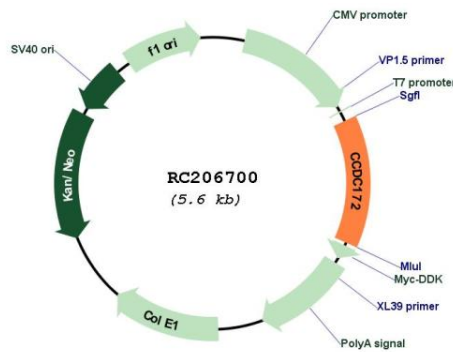
**Locus ID:** 374355

**UniProt ID:** [P0C7W6](#)

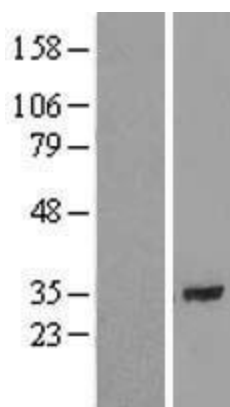
**Cytogenetics:** 10q25.3

**MW:** 31 kDa

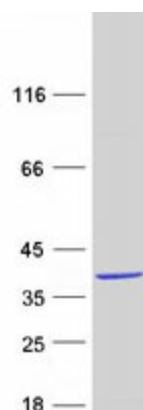
**Product images:**



Circular map for RC206700



Western blot validation of overexpression lysate (Cat# [LY404901]) using anti-DDK antibody (Cat# [TA50011-100]). Left: Cell lysates from untransfected HEK293T cells; Right: Cell lysates from HEK293T cells transfected with RC206700 using transfection reagent MegaTran 2.0 (Cat# [TT210002]).



Coomassie blue staining of purified CCDC172 protein (Cat# [TP306700]). The protein was produced from HEK293T cells transfected with CCDC172 cDNA clone (Cat# RC206700) using MegaTran 2.0 (Cat# [TT210002]).