

Product datasheet for **RC206688**

NONO (NM_007363) Human Tagged ORF Clone

Product data:

Product Type:	Expression Plasmids
Product Name:	NONO (NM_007363) Human Tagged ORF Clone
Tag:	Myc-DDK
Symbol:	NONO
Synonyms:	MRXS34; NMT55; NRB54; P54; P54NRB; PPP1R114
Mammalian Cell Selection:	Neomycin
Vector:	pCMV6-Entry (PS100001)
E. coli Selection:	Kanamycin (25 ug/mL)



[View online »](#)

ORF Nucleotide Sequence:

>RC206688 ORF sequence
 Red=Cloning site Blue=ORF Green=Tags(s)

TTTTGTAATACGACTCACTATAGGGCGGCCGGAATTCGTGACTGGATCCGGTACCGAGGAGATCTGCC
 GCC**GCGATCGCC**

ATGCAGAGTAATAAACTTTTAACTTGGAGAAGCAAAACCATACTCCAAGAAAGCATCATCAACATCACC
 ACCAGCAGCAGCACCACCAGCAGCAACAGCAGCAGCCACCACCGCCAATACCTGCAAATGGGCAACA
 GGCCAGCAGCAAAATGAAGGCTTGACTATTGACCTGAAGAATTTAGAAAACCAGGAGAGAAGACCTTC
 ACCCAACGAAGCCGTCCTTTTGTGGAAATCTTCTCCCGACATCACTGAGGAAGAAATGAGGAACTAT
 TTGAGAAATATGGAAGGCAGGCGAAGTCTTATTATAAGGATAAAGGATTTGGCTTTATCCGCTTGA
 AACCCGAACCCTAGCGGAGATTGCCAAAGTGGAGCTGGACAATATGCCACTCCGTGGAAAGCAGTGCCT
 GTGCGCTTTGCCTGCCATAGTGCATCCCTACAGTTCGAAACCTCCTCAGTATGTGTCCAACGAACTGC
 TGAAGAAGCCTTTTCTGTGTTGGCCAGGTAGAGAGGGCTGTAGTCATTGTGGATGATCGAGGAAGGCC
 CTCAGGAAAAGCATTGTTGAGTCTCAGGGAAGCCAGCTGCTCGAAAGCTCTGGACAGATGCAGTGAA
 GGCTCCTTCTGTGTAACCACATTTCTCTGCTGTGACTGTGGAGCCATGGACCAGTTAGATGATGAAG
 AGGGACTTCCAGAGAAGCTGGTTATAAAAAACCAGCAATTTACAAGGAACGAGAGCAGCCACCCAGATT
 TGCACAGCCTGGCTCCTTTGAGTATGAATATGCCATGCGCTGGAAGGCACTCATTGAGATGGAGAAGCAG
 CAGCAGGACCAAGTGGACCGCAACATCAAGGAGGCTCGTGAAGCTGGAGATGGAGATGGAAAGTGCAC
 GCCATGAGCACCAGGTATGCTAATGAGACAGGATTTGATGAGGCGCAAGAAGAACTTCGGAGGATGGA
 AGAGCTGCACAACCAAGAGGTGCAAAAACGAAAGCAACTGGAGCTCAGGCAGGAGGAAGAGCGCAGGCGC
 CGTGAAGAAGAGATGCGGCGCAGCAAGAAGAAATGATGCGGCGCAGCAGGAAGGATTCAGGGAACCT
 TCCCTGATGCGAGAGAGCAGGAGATTCCGATGGGTGAGTGCATGGCTATGGGAGGTGCTATGGCATAAACA
 CAGAGGTGCCATGCCCCCTGCTCCTGTGCCAGTGGTACCCAGCTCCTCCAGGACCTGCCACTATGATG
 CCGGATGGAACCTTTGGGATTGACCCACCAACAACTGAACGCTTTGGTCAGGCTGTACAATGGAAGGAA
 TTGGGGCAATTGGTGAACCTCCTCTGCATTCAACCGTGCAGCTCCTGGAGCTGAATTTGCCCAACAA
 ACGTCGCCGATAC

ACGCGTACGCGGCCGCTCGAGCAGAACTCATCTCAGAAGAGGATCTGGCAGCAAATGATATCCTGGATT
 ACAAGGATGACGACGATAAGGTTTAA

Protein Sequence:

>RC206688 protein sequence
 Red=Cloning site Green=Tags(s)

MQSNKTFNLEKQNHTPRKHQHQQHQQHQQQPPPPPIPANGQQASSQNEGLTIDLKNFRKPGKETF
 TQRSRLFVGNLPPDITEEEMRKLFEKYGKAGEVFIHKDKGFGFIRLETRTLAEIAKVELDNMPLRGKQLR
 VRFACHSASLTVRNLPQYVSNELLEAFSVFGQVERAVVIVDDRGRPSGKGIVFSGKPAARKALDRCSE
 GSFLLTTFPRPVTVEPMDQLDDEEGLPEKLVIKNQFHKEREQPPRFAQPGSFEYAYMRWKALIEMEKQ
 QQDQVDRNIKEAREKLEMEMEAARHEHQVLMRQDLMRRQEELRRMEELHNQEVQKRKQLELRQEEERRR
 REEEMRRQEEEMRRQEGFKGTFPDAREQEIRMGQMAMGGAMGINNRGAMPAPVPAGTPAPPGPATMM
 PDGTLGLTPPTTERFGQAATMEGIGAIGGTPPAFNRAAPGAEFAPNKRRRY

TRTRPLEQKLISEEDLAANDILDYKDDDDKV

Chromatograms:

https://cdn.origene.com/chromatograms/mk6197_b05.zip

Restriction Sites:

Sgfl-Mlul

Cloning Scheme:


ACCN: NM_007363

ORF Size: 1413 bp

OTI Disclaimer: The molecular sequence of this clone aligns with the gene accession number as a point of reference only. However, individual transcript sequences of the same gene can differ through naturally occurring variations (e.g. polymorphisms), each with its own valid existence. This clone is substantially in agreement with the reference, but a complete review of all prevailing variants is recommended prior to use. [More info](#)

OTI Annotation: This clone was engineered to express the complete ORF with an expression tag. Expression varies depending on the nature of the gene.

Components: The ORF clone is ion-exchange column purified and shipped in a 2D barcoded Matrix tube containing 10ug of transfection-ready, dried plasmid DNA (reconstitute with 100 ul of water).

Reconstitution Method:

1. Centrifuge at 5,000xg for 5min.
2. Carefully open the tube and add 100ul of sterile water to dissolve the DNA.
3. Close the tube and incubate for 10 minutes at room temperature.
4. Briefly vortex the tube and then do a quick spin (less than 5000xg) to concentrate the liquid at the bottom.
5. Store the suspended plasmid at -20°C. The DNA is stable for at least one year from date of shipping when stored at -20°C.

Note: Plasmids are not sterile. For experiments where strict sterility is required, filtration with 0.22um filter is required.

RefSeq: [NM_007363.5](#)

RefSeq Size: 3114 bp

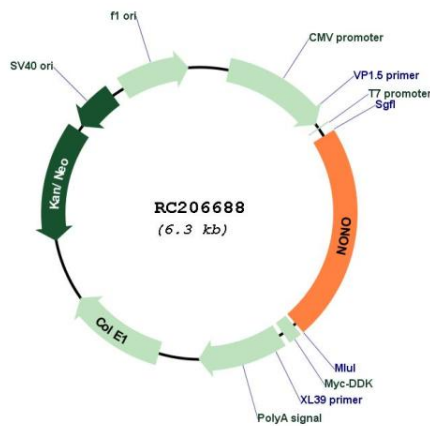
RefSeq ORF: 1416 bp

Locus ID: 4841

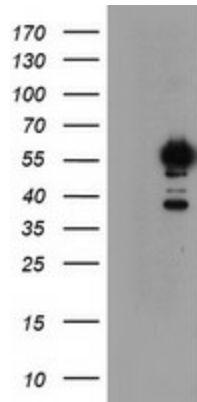
UniProt ID: [Q15233](#)
Cytogenetics: Xq13.1
Domains: RRM
Protein Families: Druggable Genome, Transcription Factors
MW: 54.2 kDa
Gene Summary:

This gene encodes an RNA-binding protein which plays various roles in the nucleus, including transcriptional regulation and RNA splicing. A rearrangement between this gene and the transcription factor E3 gene has been observed in papillary renal cell carcinoma. Alternatively spliced transcript variants have been described. Pseudogenes exist on Chromosomes 2 and 16. [provided by RefSeq, Feb 2009]

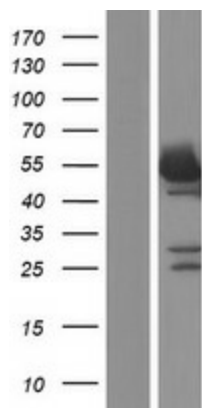
Product images:



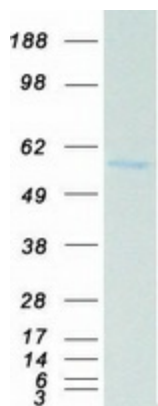
Circular map for RC206688



HEK293T cells were transfected with the pCMV6-ENTRY control (Cat# [PS100001], Left lane) or pCMV6-ENTRY NONO (Cat# RC206688, Right lane) cDNA for 48 hrs and lysed. Equivalent amounts of cell lysates (5 ug per lane) were separated by SDS-PAGE and immunoblotted with anti-NONO (Cat# [TA504777]). Positive lysates [LY402135] (100ug) and [LC402135] (20ug) can be purchased separately from OriGene.



Western blot validation of overexpression lysate (Cat# [LY428869]) using anti-DDK antibody (Cat# [TA50011-100]). Left: Cell lysates from untransfected HEK293T cells; Right: Cell lysates from HEK293T cells transfected with [RC226591] using transfection reagent MegaTran 2.0 (Cat# [TT210002]).



Coomassie blue staining of purified NONO protein (Cat# [TP306688]). The protein was produced from HEK293T cells transfected with NONO cDNA clone (Cat# RC206688) using MegaTran 2.0 (Cat# [TT210002]).