

Product datasheet for RC206687

TRIB3 (NM_021158) Human Tagged ORF Clone

Product data:

Product Type:	Expression Plasmids
Product Name:	TRIB3 (NM_021158) Human Tagged ORF Clone
Tag:	Myc-DDK
Symbol:	TRIB3
Synonyms:	C20orf97; NIPK; SINK; SKIP3; TRB3
Mammalian Cell Selection:	Neomycin
Vector:	pCMV6-Entry (PS100001)
E. coli Selection:	Kanamycin (25 ug/mL)
ORF Nucleotide Sequence:	>RC206687 representing NM_021158 Red=Cloning site Blue=ORF Green=Tags(s)

TTTTGTAATACGACTCACTATAGGGCGGCCGGAATTCGTCGACTGGATCCGGTACCGAGGAGATCTGCC
GCC**CGATCGC**C

ATGCGAGCCACCCCTCTGGCTGCTCCTGCGGGTCCCTGTCCAGGAAGAAGCGGTTGGAGTTGGATGACA
ACTTAGATACCGAGCGTCCCGTCCAGAAACGAGCTCGAAGTGGGCCCCAGCCAGACTGCCCCCTGCCT
GTTGCCCTGAGCCACCTACTGCTCCAGATCGTGCAACTGCTGTGGCCACTGCCCTCCCGTCTTGGGCC
TATGTCCTCTGGAGCCGAGGAGGGCGGGCGGGCCTACCAGGCCCTGCACTGCCCTACAGGCACTGAGT
ATACCTGCAAGGTGTACCCCGTCCAGGAAGCCCTGGCCGTGCTGGAGCCCTATGCGGGCTGCCCCGCA
CAAGCATGTGGCTCGGCCACTGAGTCTGGCTGGTACCCAGCTCCTCTACGCCTTTTCACTCGGACC
CATGGGACATGCACAGCCTGGTGCAGCCGCCACCGTATCCCTGAGCCTGAGGCTGCCGTGCTCTTCC
GCCAGATGGCCACCGCCCTGGCGCACTGTCAACAGCACGGTCTGGTCTGCGTGATCTCAAGCTGTGTGCG
CTTTGTCTTCGCTGACCGTGAGAGGAAGAAGCTGGTGTGGAGAACCTGGAGGACTCCTGCGTGCTGACT
GGGCCAGATGATCCCTGTGGGACAAGCACGCGTGGCCAGCCTACGTGGGACCTGAGATACTCAGCTCAC
GGGCCTCATACTCGGGCAAGGCAGCCGATGTCTGGAGCCTGGGCGTGGCGCTCTTACCATGCTGGCCGG
CCACTACCCCTTCAGGACTCGGAGCCTGTCTGCTCTTCGGCAAGATCCGCCGGGGCCCTACGCCTTG
CCTGCAGGCCTCTCGGCCCTGCCCGCTGTCTGGTTCGCTGCCTCCTTCTGCGGAGCCAGCTGAACGGC
TCACAGCCACAGGCATCCTCTGCACCCCTGGCTGCGACAGGACCCGATGCCCTTAGCCCAACCCGATC
CCATCTCTGGGAGGCTGCCAGGTGGTCCCTGATGGACTGGGGCTGGACGAAGCCAGGAAGAGGAGGGA
GACAGAGAAGTGGTTCTGTATGGC

AC**GGGCCG**CTCGAGCAGAACTCATCTCAGAAGAGGATCTGGCAGCAAATGATATCCTGGA
TTACAAGGATGACGACGATAAGGTTTAA



[View online »](#)

Protein Sequence: >RC206687 representing NM_021158
 Red=Cloning site Green=Tags(s)

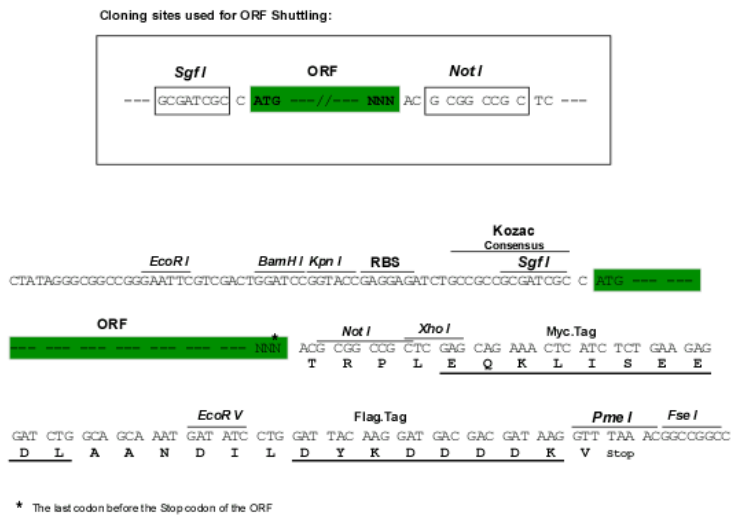
MRATPLAAPAGSLSRKKRLEDDNLDTERPVQKRARSGPQRLPPCLLPLSPPTAPDRATAVATASRLGP
 YVLLPEEGGRAYQALHCPTGTEYTCVKVYPVQEALAVLEPYARLPPHKHVARPTEVLAGTQLLYAFFTRT
 HGDHMSLVRSRHRIPPEAAVLFROMATALAHCHQHGLVLRDLKLCRFVADRERKKLVLENLEDSCVLT
 GPDDSLWDKHACPAYVGPPEILSSRASYSKAADVWSLGVALFTMLAGHYPFQDSEPVLVFGKIRRGAYAL
 PAGLSAPARCLVRCLLRREPAERLTATGILLHPWLRQDPMPLAPTRSHLWEAAQVVPDGLGLDEAREEEEG
 DREVVLVYG

TRRLEQKLISEEDLAANDILDYKDDDDKV

Chromatograms: https://cdn.origene.com/chromatograms/mg2479_c07.zip

Restriction Sites: SgfI-NotI

Cloning Scheme:



ACCN: NM_021158

ORF Size: 1074 bp

OTI Disclaimer: The molecular sequence of this clone aligns with the gene accession number as a point of reference only. However, individual transcript sequences of the same gene can differ through naturally occurring variations (e.g. polymorphisms), each with its own valid existence. This clone is substantially in agreement with the reference, but a complete review of all prevailing variants is recommended prior to use. [More info](#)

OTI Annotation: This clone was engineered to express the complete ORF with an expression tag. Expression varies depending on the nature of the gene.

Components: The ORF clone is ion-exchange column purified and shipped in a 2D barcoded Matrix tube containing 10ug of transfection-ready, dried plasmid DNA (reconstitute with 100 ul of water).

Reconstitution Method:

1. Centrifuge at 5,000xg for 5min.
2. Carefully open the tube and add 100ul of sterile water to dissolve the DNA.
3. Close the tube and incubate for 10 minutes at room temperature.
4. Briefly vortex the tube and then do a quick spin (less than 5000xg) to concentrate the liquid at the bottom.
5. Store the suspended plasmid at -20°C. The DNA is stable for at least one year from date of shipping when stored at -20°C.

RefSeq: [NM_021158.4](#)

RefSeq Size: 2469 bp

RefSeq ORF: 1077 bp

Locus ID: 57761

UniProt ID: [Q96RU7](#)

Cytogenetics: 20p13

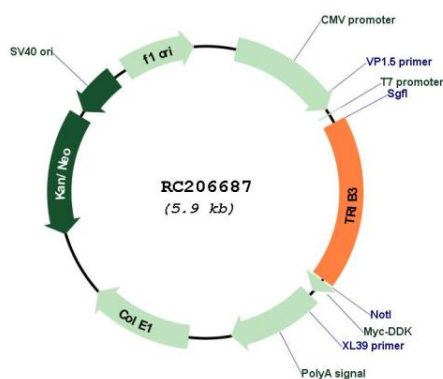
Domains: pkinase, S_TKc

Protein Families: Druggable Genome, Protein Kinase, Transcription Factors

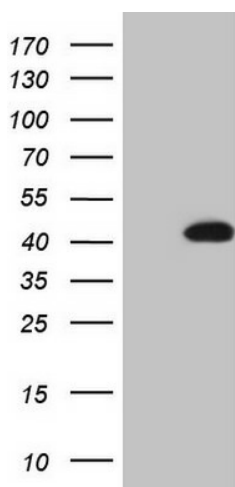
MW: 39.4 kDa

Gene Summary: The protein encoded by this gene is a putative protein kinase that is induced by the transcription factor NF-kappaB. The encoded protein is a negative regulator of NF-kappaB and can also sensitize cells to TNF- and TRAIL-induced apoptosis. In addition, this protein can negatively regulate the cell survival serine-threonine kinase AKT1. Differential promoter usage and alternate splicing result in multiple transcript variants. [provided by RefSeq, Jul 2014]

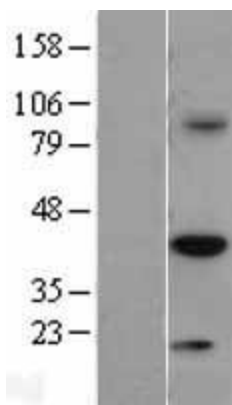
Product images:



Circular map for RC206687



HEK293T cells were transfected with the pCMV6-ENTRY control (Cat# [PS100001], Left lane) or pCMV6-ENTRY TRIB3 (Cat# RC206687, Right lane) cDNA for 48 hrs and lysed. Equivalent amounts of cell lysates (5 ug per lane) were separated by SDS-PAGE and immunoblotted with anti-TRIB3 (Cat# [TA807483]). Positive lysates [LY402848] (100ug) and [LC402848] (20ug) can be purchased separately from OriGene.



Western blot validation of overexpression lysate (Cat# [LY402848]) using anti-DDK antibody (Cat# [TA50011-100]). Left: Cell lysates from untransfected HEK293T cells; Right: Cell lysates from HEK293T cells transfected with RC206687 using transfection reagent MegaTran 2.0 (Cat# [TT210002]).