

## Product datasheet for **RC206686**

### **RHEBL1 (NM\_144593) Human Tagged ORF Clone**

#### Product data:

Product Type:	Expression Plasmids
Product Name:	RHEBL1 (NM_144593) Human Tagged ORF Clone
Tag:	Myc-DDK
Symbol:	RHEBL1
Synonyms:	RHEBL1c
Mammalian Cell Selection:	Neomycin
Vector:	pCMV6-Entry (PS100001)
E. coli Selection:	Kanamycin (25 ug/mL)
ORF Nucleotide Sequence:	>RC206686 ORF sequence Red=Cloning site Blue=ORF Green=Tags(s)

TTTTGTAATACGACTCACTATAGGGCGGCCGGAATTCGTCGACTGGATCCGGTACCGAGGAGATCTGCC  
GCC**CGATCGCC**

ATGCCGCTAGTCCGCTACAGGAAGGTGGTCATCCTCGGATACCGCTGTGTAGGGAAGACATCTTTGGCAC  
ATCAATTTGTGGAAGGCGAGTTCTCGGAAGGCTACGATCTACAGTGGAGAATACTTACAGCAAGATAGT  
GACTCTTGGCAAAGATGAGTTTCACCTACATTTGGTGGACACAGCAGGGCAGGATGAGTACAGCATTCTG  
CCCTATTCATTCATCATTGGGGTCCATGGTTATGTGCTTGTGATTCTGTACCTCTCTGCATAGCTTCC  
AAGTCATTGAGAGTCTGTACAAAAGCTACATGAAGGCCATGGGAAAACCGGGTCCAGTGTTCTAGT  
GGGGAACAAGGCAGATCTCTCCAGAGAGAGAGGTACAGGCAGTTGAAGGAAAGAAGCTGGCAGAGTCC  
TGGGGTGCACATTTATGGAGTCATCTGCTCGAGAGAATCAGCTGACTCAAGGCATCTTACCAAAGTCA  
TCCAGGAGATTGCCCGTGTGGAGAATTCCTATGGGCAAGAGCGTCGCTGCCATCTCATG

**ACGCGT**ACGCGGCCGCTCGAGCAGAACTCATCTCAGAAGAGGATCTGGCAGCAAATGATATCCTGGATT  
ACAAGGATGACGACGATAAGGTTTAA

Protein Sequence:	>RC206686 protein sequence Red=Cloning site Green=Tags(s)
-------------------	--

MPLVRYRKVVILGYRCVGKTSLAHQFVEGEFSEGYDPTVENTYSKIVTLGKDEFHLHLVDTAGQDEYSIL  
PYSFIIIGVHGYLVVSVTSLHSFQVIESLYQKLHEGHGKTRVPVVLVGNKADLSPEREVQAVEGKKLAES  
WGATFMESSARENQLTQIFTKVIQEIARVENSYGQERRCHLM

**TR**TRPLEQKLISEEDLAANDILDYKDDDDKV

Chromatograms:	<a href="https://cdn.origene.com/chromatograms/mk6018_g05.zip">https://cdn.origene.com/chromatograms/mk6018_g05.zip</a>
----------------	---



[View online »](#)

Restriction Sites: SgfI-MluI

Cloning Scheme:



ACCN: NM\_144593

ORF Size: 549 bp

OTI Disclaimer: The molecular sequence of this clone aligns with the gene accession number as a point of reference only. However, individual transcript sequences of the same gene can differ through naturally occurring variations (e.g. polymorphisms), each with its own valid existence. This clone is substantially in agreement with the reference, but a complete review of all prevailing variants is recommended prior to use. [More info](#)

OTI Annotation: This clone was engineered to express the complete ORF with an expression tag. Expression varies depending on the nature of the gene.

Components: The ORF clone is ion-exchange column purified and shipped in a 2D barcoded Matrix tube containing 10ug of transfection-ready, dried plasmid DNA (reconstitute with 100 ul of water).

Reconstitution Method:

1. Centrifuge at 5,000xg for 5min.
2. Carefully open the tube and add 100ul of sterile water to dissolve the DNA.
3. Close the tube and incubate for 10 minutes at room temperature.
4. Briefly vortex the tube and then do a quick spin (less than 5000xg) to concentrate the liquid at the bottom.
5. Store the suspended plasmid at -20°C. The DNA is stable for at least one year from date of shipping when stored at -20°C.

RefSeq: [NM\\_144593.1](#), [NP\\_653194.1](#)

RefSeq Size: 1192 bp

RefSeq ORF: 552 bp

Locus ID: 121268

UniProt ID: [Q8TAI7](#)

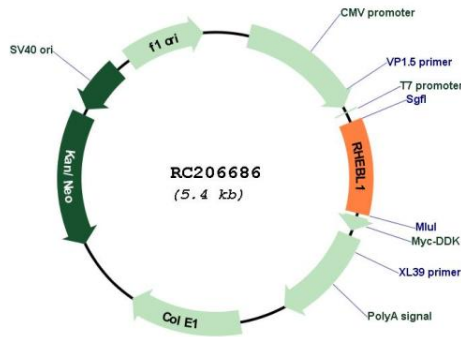
**Cytogenetics:** 12q13.12

**Domains:** ras, RAS, RHO, RAB

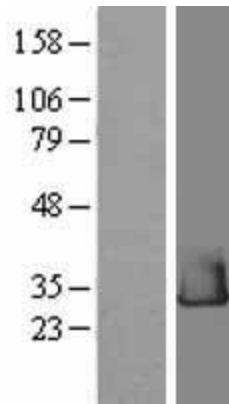
**MW:** 20.7 kDa

**Gene Summary:** Binds GTP and exhibits intrinsic GTPase activity. May activate NF-kappa-B-mediated gene transcription. Promotes signal transduction through MTOR, activates RPS6KB1, and is a downstream target of the small GTPase-activating proteins TSC1 and TSC2.[UniProtKB/Swiss-Prot Function]

**Product images:**



Circular map for RC206686



Western blot validation of overexpression lysate (Cat# [LY403396]) using anti-DDK antibody (Cat# [TA50011-100]). Left: Cell lysates from untransfected HEK293T cells; Right: Cell lysates from HEK293T cells transfected with RC206686 using transfection reagent MegaTran 2.0 (Cat# [TT210002]).