

Product datasheet for **RC206685**

Granzyme H (GZMH) (NM_033423) Human Tagged ORF Clone

Product data:

Product Type:	Expression Plasmids
Product Name:	Granzyme H (GZMH) (NM_033423) Human Tagged ORF Clone
Tag:	Myc-DDK
Symbol:	Granzyme H
Synonyms:	CCP-X; CGL-2; CSP-C; CTLA1; CTSGL2
Mammalian Cell Selection:	Neomycin
Vector:	pCMV6-Entry (PS100001)
E. coli Selection:	Kanamycin (25 ug/mL)
ORF Nucleotide Sequence:	>RC206685 ORF sequence Red=Cloning site Blue=ORF Green=Tags(s)

TTTTGTAATACGACTCACTATAGGGCGGCCGGAATTCGTCGACTGGATCCGGTACCGAGGAGATCTGCC
GCC**CGATCGCC**

ATGCAGCCATTCCCTCCTCTGTTGGCCTTTCTTCTGACCCCTGGGGCTGGGACAGAGGAGATCATCGGGG
GCCATGAGGCCAAGCCCCACTCCCGCCCTACATGGCCTTTGTTTCAGTTTCTGCAAGAGAAGAGTCGGAA
GAGGTGTGGCGGCATCCTAGTGAGAAAGGACTTTGTGCTGACAGCTGCTCACTGCCAGGGAAGCTCCATA
AATGTCACCTTGGGGGCCACAATATCAAGGAACAGGAGCGGACCCAGCAGTTTATCCCTGTGAAAAGAC
CCATCCCCATCCAGCCTATAATCCTAAGAACTTCTCCAACGACATCATGCTACTGCAGCTGGAGAGAAA
GGCCAAGTGGACCACAGCTGTGCGGCCTCTCAGGCTACCTAGCAGCAAGGCCAGGTGAAGCCAGGGCAG
CTGTGCAGTGTGGCTGGCTGGGTTATGTCTCAATGAGCACTTTAGCAACCACACTGCAGGAAGTGTTC
TGACAGTGCAGAAGGACTGCCAGTGTGAACGTCTCTTCCATGGCAATTACAGCAGAGCCACTGAGATTTG
TGTGGGGGATCCAAGAAGACACAGACCGGTTTCAAGGGGGACTCCGGGGGGCCCTCGTGTGTAAGGAC
GTAGCCCAAGGTATTCTCTCTATGAAACAAAAAGGGACACCTCCAGGAGTCTACATCAAGGTCTCAC
ACTTCTGCCCTGGATAAAGAGAACAATGAAGCGCCTC

ACGCGTACGCGGCCGCTCGAGCAGAACTCATCTCAGAAGAGGATCTGGCAGCAAATGATATCCTGGATT
ACAAGGATGACGACGATAAGGTTTAA



[View online »](#)

Reconstitution Method:

1. Centrifuge at 5,000xg for 5min.
2. Carefully open the tube and add 100ul of sterile water to dissolve the DNA.
3. Close the tube and incubate for 10 minutes at room temperature.
4. Briefly vortex the tube and then do a quick spin (less than 5000xg) to concentrate the liquid at the bottom.
5. Store the suspended plasmid at -20°C. The DNA is stable for at least one year from date of shipping when stored at -20°C.

RefSeq: [NM_033423.5](#)

RefSeq Size: 987 bp

RefSeq ORF: 741 bp

Locus ID: 2999

UniProt ID: [P20718](#)

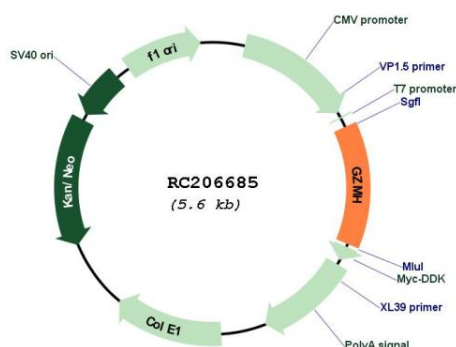
Cytogenetics: 14q12

Protein Families: Druggable Genome, Protease

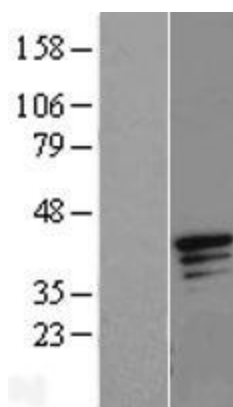
MW: 27.3 kDa

Gene Summary: This gene encodes a member of the peptidase S1 family of serine proteases. Alternative splicing results in multiple transcript variants, at least one of which encodes a preproprotein that is proteolytically processed to generate a chymotrypsin-like protease. This protein is reported to be constitutively expressed in the NK (natural killer) cells of the immune system and may play a role in the cytotoxic arm of the innate immune response by inducing target cell death and by directly cleaving substrates in pathogen-infected cells. This gene is present in a gene cluster with another member of the granzyme subfamily on chromosome 14. [provided by RefSeq, Nov 2015]

Product images:



Circular map for RC206685



Western blot validation of overexpression lysate (Cat# [LY409547]) using anti-DDK antibody (Cat# [TA50011-100]). Left: Cell lysates from untransfected HEK293T cells; Right: Cell lysates from HEK293T cells transfected with RC206685 using transfection reagent MegaTran 2.0 (Cat# [TT210002]).