

Product datasheet for **RC206683**

ERP27 (NM_152321) Human Tagged ORF Clone

Product data:

Product Type:	Expression Plasmids
Product Name:	ERP27 (NM_152321) Human Tagged ORF Clone
Tag:	Myc-DDK
Symbol:	ERP27
Synonyms:	C12orf46; PDIA8
Mammalian Cell Selection:	Neomycin
Vector:	pCMV6-Entry (PS100001)
E. coli Selection:	Kanamycin (25 ug/mL)
ORF Nucleotide Sequence:	>RC206683 ORF sequence Red=Cloning site Blue=ORF Green=Tags(s)

TTTTGTAATACGACTCACTATAGGGCGCCGGGAATTCGTCGACTGGATCCGGTACCGAGGAGATCTGCC
GCC**CGATCGCC**

ATGGAAGCTGCCCGTCCAGGTTTCATGTTCTCTTATTTCTCCTCACGTGTGAGCTGGCTGCAGAAGTTG
CTGCAGAAGTTGAGAAATCCTCAGATGGTCTGGTGTGCCAGGAACCCACGTGGCTCACAGATGTCCC
AGCTGCCATGGAATTCATTGCTGCCACTGAGGTGGCTGCATAGGCTTCTCCAGGATTTAGAAATACCA
GCAGTGCCATACTCCATAGCATGGTGCAAAAATCCCAGGCGTGCATTTGGGATCAGCACTGATTCTG
AGGTTCTGACACACTACAACATCACTGGGAACACCATCTGCCTCTTCGCCTGGTAGACAATGAACAACT
GAATTTAGAGGACGAAGACATTGAAAGCATTGATGCCACCAAATTGAGCGTTTCATTGAGATCAACAGC
CTCCACATGGTGACAGAGTACAACCTGTGACTGTGATTGGGTTATTCAACAGCGTAATTCAGATTCATC
TCCTCCTGATAATGAACAAGGCCTCCCCAGAGTATGAAGAGAACATGCACAGATACCAGAAGGCAGCCAA
GCTCTCCAGGGGAAGATTCTCTTTATTCTGGTGGACAGTGGTATGAAAGAAAAATGGGAAGGTGATATCA
TTTTTCAAATAAAGGAGTCTCAACTGCCAGCTTTGGCAATTTACCAGACTCTAGATGACGAGTGGGATA
CACTGCCACAGCAGAAGTTTCCGTAGAGCATGTGCAAACTTTGTGATGGATTCTAAGTGAAAAATT
GTTGAAAGAAAAATCGTGAATCAGAAGGAAAGACTCCAAAGGTGGAATC

ACGCGTACGCGGCCGCTCGAGCAGAAACTCATCTCAGAAGAGGATCTGGCAGCAAATGATATCCTGGATT
ACAAGGATGACGACGATAAGGTTTAA



[View online »](#)

Protein Sequence: >RC206683 protein sequence
Red=Cloning site Green=Tags(s)

MEAAPSRFMFLFLLLTCELAEEVAAEVEKSSDGPAAQEPTWLTDVPAAMEFIAATEVAVIGFFQDLEIP
 AVPIILHSMVQKFPVGSFGISTDSEVLTHYNITGNITICLFRVDNEQLNLEDEIDIESIDATKLSRFIEINS
 LHMVTEYNPVTVIGLFNSVIQIHLILLIMNKASPEYEENMHRYQKAAKLFQGKILFILVDSGMKENGKVIS
 FFKLKESQLPALAIYQTLDDWDTLPTAEVSVQNFCDGFLSGKLLKENRESEKTPKVEL

TRTRPLEQKLISEEDLAANDILDYKDDDDKV

Chromatograms: https://cdn.origene.com/chromatograms/mk6328_h04.zip

Restriction Sites: SgfI-MluI

Cloning Scheme:



ACCN: NM_152321

ORF Size: 819 bp

OTI Disclaimer: The molecular sequence of this clone aligns with the gene accession number as a point of reference only. However, individual transcript sequences of the same gene can differ through naturally occurring variations (e.g. polymorphisms), each with its own valid existence. This clone is substantially in agreement with the reference, but a complete review of all prevailing variants is recommended prior to use. [More info](#)

OTI Annotation: This clone was engineered to express the complete ORF with an expression tag. Expression varies depending on the nature of the gene.

Components: The ORF clone is ion-exchange column purified and shipped in a 2D barcoded Matrix tube containing 10ug of transfection-ready, dried plasmid DNA (reconstitute with 100 ul of water).

Reconstitution Method:

1. Centrifuge at 5,000xg for 5min.
2. Carefully open the tube and add 100ul of sterile water to dissolve the DNA.
3. Close the tube and incubate for 10 minutes at room temperature.
4. Briefly vortex the tube and then do a quick spin (less than 5000xg) to concentrate the liquid at the bottom.
5. Store the suspended plasmid at -20°C. The DNA is stable for at least one year from date of shipping when stored at -20°C.

RefSeq: [NM_152321.4](#)

RefSeq Size: 1581 bp

RefSeq ORF: 822 bp

Locus ID: 121506

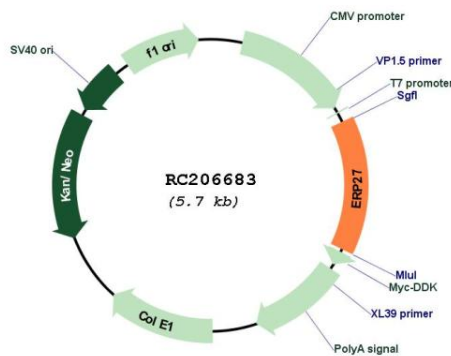
UniProt ID: [Q96DN0](#)

Cytogenetics: 12p12.3

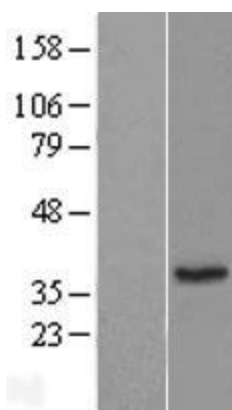
MW: 30.5 kDa

Gene Summary: This gene encodes a noncatalytic member of the protein disulfide isomerase (PDI) family of endoplasmic reticulum (ER) proteins. The canonical protein has an N-terminal signal sequence, two thioredoxin (TRX)-like domains and a C-terminal ER-retention sequence. Alternative splicing results in multiple transcript variants encoding distinct isoforms; some of which lack domains present in the canonical protein. [provided by RefSeq, Dec 2016]

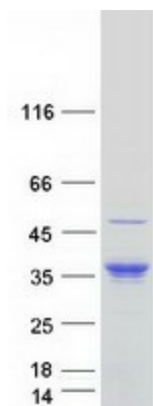
Product images:



Circular map for RC206683



Western blot validation of overexpression lysate (Cat# [LY407647]) using anti-DDK antibody (Cat# [TA50011-100]). Left: Cell lysates from untransfected HEK293T cells; Right: Cell lysates from HEK293T cells transfected with RC206683 using transfection reagent MegaTran 2.0 (Cat# [TT210002]).



Coomassie blue staining of purified ERP27 protein (Cat# [TP306683]). The protein was produced from HEK293T cells transfected with ERP27 cDNA clone (Cat# RC206683) using MegaTran 2.0 (Cat# [TT210002]).